

## Attribution of changes in global wetland methane emissions from pre-industrial to present using CLM4.5-BGC

This content has been downloaded from IOPscience. Please scroll down to see the full text.

2016 Environ. Res. Lett. 11 034020

(<http://iopscience.iop.org/1748-9326/11/3/034020>)

View [the table of contents for this issue](#), or go to the [journal homepage](#) for more

Download details:

IP Address: 210.77.64.109

This content was downloaded on 06/04/2017 at 08:50

Please note that [terms and conditions apply](#).

You may also be interested in:

[Surface water inundation in the boreal-Arctic: potential impacts on regional methane emissions](#)

Jennifer D Watts, John S Kimball, Annett Bartsch et al.

[Influence of changes in wetland inundation extent on net fluxes of carbon dioxide and methane in northern high latitudes from 1993 to 2004](#)

Qianlai Zhuang, Xudong Zhu, Yujie He et al.

[Net exchanges of methane and carbon dioxide on the Qinghai-Tibetan Plateau from 1979 to 2100](#)

Zhenong Jin, Qianlai Zhuang, Jin-Sheng He et al.

[Permafrost thaw and resulting soil moisture changes regulate projected high-latitude CO<sub>2</sub> and CH<sub>4</sub> emissions](#)

D M Lawrence, C D Koven, S C Swenson et al.

[Methane emissions from western Siberian wetlands: heterogeneity and sensitivity to climate change](#)

T J Bohn, D P Lettenmaier, K Sathulur et al.

[Focus on the impact of climate change on wetland ecosystems and carbon dynamics](#)

Lei Meng, Nigel Roulet, Qianlai Zhuang et al.

[Spatiotemporal patterns of evapotranspiration in response to multiple environmental factors simulated by the Community Land Model](#)

Xiaoying Shi, Jiafu Mao, Peter E Thornton et al.

[Drivers and patterns of land biosphere carbon balance reversal](#)

Christoph Müller, Elke Stehfest, Jelle G van Minnen et al.

## Environmental Research Letters



## LETTER

## Attribution of changes in global wetland methane emissions from pre-industrial to present using CLM4.5-BGC

## OPEN ACCESS

## RECEIVED

16 August 2015

## REVISED

19 February 2016

## ACCEPTED FOR PUBLICATION

23 February 2016

## PUBLISHED

10 March 2016

Original content from this work may be used under the terms of the [Creative Commons Attribution 3.0 licence](#).

Any further distribution of this work must maintain attribution to the author(s) and the title of the work, journal citation and DOI.

Rajendra Paudel<sup>1,2,6</sup>, Natalie M Mahowald<sup>1</sup>, Peter G M Hess<sup>3</sup>, Lei Meng<sup>4</sup> and William J Riley<sup>5</sup><sup>1</sup> Department of Earth and Atmospheric Sciences, Cornell University, Ithaca, NY 14850, USA<sup>2</sup> Everglades Foundation, Palmetto Bay, FL 33157, USA<sup>3</sup> Department of Biological and Environmental Engineering, Cornell University, Ithaca, NY 14850, USA<sup>4</sup> Department of Geography and Environmental and Sustainability Studies Program, Western Michigan University, Kalamazoo, MI 49008, USA<sup>5</sup> Earth Sciences Division, Lawrence Berkeley National Laboratory, Berkeley, CA 94720, USA<sup>6</sup> Author to whom any correspondence should be addressed.E-mail: [rpaudel@evergladesfoundation.org](mailto:rpaudel@evergladesfoundation.org)**Keywords:** wetland, methane emissions, attribution, Community Land Model, climate, environmental factors, simulationsSupplementary material for this article is available [online](#)**Abstract**

An understanding of potential factors controlling methane emissions from natural wetlands is important to accurately project future atmospheric methane concentrations. Here, we examine the relative contributions of climatic and environmental factors, such as precipitation, temperature, atmospheric CO<sub>2</sub> concentration, nitrogen deposition, wetland inundation extent, and land-use and land-cover change, on changes in wetland methane emissions from preindustrial to present day (i.e., 1850–2005). We apply a mechanistic methane biogeochemical model integrated in the Community Land Model version 4.5 (CLM4.5), the land component of the Community Earth System Model. The methane model explicitly simulates methane production, oxidation, ebullition, transport through aerenchyma of plants, and aqueous and gaseous diffusion. We conduct a suite of model simulations from 1850 to 2005, with all changes in environmental factors included, and sensitivity studies isolating each factor. Globally, we estimate that preindustrial methane emissions were higher by 10% than present-day emissions from natural wetlands, with emissions changes from preindustrial to the present of +15%, –41%, and –11% for the high latitudes, temperate regions, and tropics, respectively. The most important change is due to the estimated change in wetland extent, due to the conversion of wetland areas to drylands by humans. This effect alone leads to higher preindustrial global methane fluxes by 33% relative to the present, with the largest change in temperate regions (+80%). These increases were partially offset by lower preindustrial emissions due to lower CO<sub>2</sub> levels (10%), shifts in precipitation (7%), lower nitrogen deposition (3%), and changes in land-use and land-cover (2%). Cooler temperatures in the preindustrial regions resulted in our simulations in an increase in global methane emissions of 6% relative to present day. Much of the sensitivity to these perturbations is mediated in the model by changes in methane substrate production and the areal extent of wetlands. The detrended interannual variability of high-latitude methane emissions is explained by the variation in substrate production and wetland inundation extent, whereas the tropical emission variability is explained by both of those variables and precipitation.

**1. Introduction**

Methane is a powerful greenhouse gas with 32–45 times the warming potential of carbon dioxide (CO<sub>2</sub>) over a 100 year time frame (IPCC 2013, Neubauer and

Megonigal 2015). Natural wetlands, the largest single source of atmospheric methane, accounts for ~30% of mean global emissions (IPCC 2013, Kirschke *et al* 2013), and make a significant contribution to the interannual variability (IAV) of atmospheric methane

concentrations (Spahni *et al* 2011). Kirschke *et al* (2013) reported a wide range of global wetland emissions estimated using bottom-up approaches for the decade of 2000–2009 (177–284 Tg CH<sub>4</sub> yr<sup>-1</sup>) indicating that the global emissions remain highly uncertain. Some studies have concluded that methane emissions will increase considerably in the future in a warmer climate, potentially inducing climate-methane feedbacks from wetlands (Ringeval *et al* 2011, Gao *et al* 2013), while other studies have shown the opposite (Koven *et al* 2015, Zhu *et al* 2013). Wetland methane fluxes have substantial inter-annual variability (Melton *et al* 2013) and are driven by changes in several controlling factors related to climate and the environment, such as precipitation (Bohn *et al* 2007), temperature (Christensen *et al* 2003, Bloom *et al* 2010), atmospheric CO<sub>2</sub> concentration (Van Groenigen *et al* 2011), and nitrogen deposition (Granberg *et al* 2001). Improved understanding of the influence of changes in these factors on methane emissions is crucial for more accurate projections of atmospheric methane concentrations. While these factors play an important role in determining the future evolution of methane concentrations, the relative importance of each factor is not well understood. Anthropogenic activities such as wetland conversion may also impact methane emissions through changes in wetland inundated area (Chappellaz *et al* 1993, Maltby and Immirzi 1993, Watts *et al* 2014, Knox *et al* 2014). An understanding of the attribution of the changes in different greenhouse gases is increasingly important (Ciais *et al* 2013), as scientists try to understand how to best reduce anthropogenic drivers for climate change (Allen *et al* 2009, Unger *et al* 2010).

Prior modeling studies have attempted to quantify the influence of future climate change (in particular surface temperature and precipitation) and atmospheric CO<sub>2</sub> on wetland methane emissions (Gedney *et al* 2004, Shindell *et al* 2004, Eliseev *et al* 2008, Volodin 2008, Ringeval *et al* 2011, Riley *et al* 2011). There remains substantial uncertainty concerning the effects of these factors on global as well as regional methane emissions (Bloom *et al* 2010, Bohn *et al* 2015). Wetland methane emissions are predicted to increase by 50%–150% during the 21st century (Gedney *et al* 2004, Shindell *et al* 2004, Volodin 2008, Ringeval *et al* 2011), but previous studies have not focused on attributing the causes of the changes in emissions between preindustrial and current. A better understanding of the change in natural methane emissions between preindustrial and present day can inform the reasons behind ongoing increases in atmospheric methane concentration and how they might continue in the future.

Herein, we apply a mechanistic methane emission model within the Community Land Model (CLM4.5) of the Community Earth System Model (CESM) to attribute the relative importance of various factors controlling methane emissions, such as atmospheric

CO<sub>2</sub> concentration, nitrogen deposition, climate, wetland inundation extent, and land-use and land-cover change on wetland methane emissions from pre-industrial to present day (from 1850 to 2005).

## 2. Models and datasets

### 2.1. Model description

We use version 4.5 of the CLM (CLM4.5) within the CESM version 1.2 (CESM1.2) (Hurrell *et al* 2013). CLM4.5 represents detailed biophysics, hydrology, biogeochemistry, and dynamic vegetation (Oleson *et al* 2013, Koven *et al* 2013). The biogeochemical model (CLM4.5-BGC) is coupled to the simulated biophysics and hydrology and is prognostic with respect to carbon, nitrogen, and methane dynamics (Riley *et al* 2011, Bonan *et al* 2013, Koven *et al* 2013). A mechanistic methane biogeochemical model (CLM4Me') integrated into CLM4.5-BGC (Riley *et al* 2011, Meng *et al* 2012) is used. CLM4Me' explicitly simulates the physical and biogeochemical processes regulating terrestrial methane fluxes such as methane production, oxidation, ebullition, transport through aerenchyma of wetland plants, and diffusion through soil (Riley *et al* 2011) (see supplementary materials for process representations). Wetlands are not represented with unique plant functional types in CLM4.5, but the portion of the gridcell that is inundated year round is considered to have aerenchyma (Meng *et al* 2012). We make this assumption here to improve our ability to simulate soil methane dynamics without adding a new wetland plant functional type. Formation of aerenchyma may not be controlled in some plants by flooding conditions; therefore, it may underestimate the aerenchyma area in unflooded plants (Fabri *et al* 2005). Meng *et al* (2012) added additional constraints on methane emissions by including a pH and redox functional dependence for methane production as well as the ability to simulate a satellite-derived inundation fraction (Prigent *et al* 2007, Ringeval *et al* 2010). The simulated methane fluxes have been evaluated against: the rather limited site-level observations of methane fluxes (Riley *et al* 2011, Meng *et al* 2012, Müller *et al* 2015); observations and atmospheric inversion estimates of methane fluxes in the West Siberian Lowlands (Bohn *et al* 2015); three recent global atmospheric inversion estimates of methane wetland fluxes (Riley *et al* 2011); and the measured IAV in atmospheric methane concentrations at 14 locations across the globe in Community Atmospheric Model with Chemistry (CAM-Chem) simulations (Meng *et al* 2015). Wetland emissions are a primary source of IAV in atmospheric methane emissions (Meng *et al* 2015).

### 2.2. Model configuration and experiments

Performing a full global sensitivity analysis for CLM4.5-BGC is computationally intractable.

**Table 1.** Set of simulation experiments to estimate the sensitivity of methane emissions in response to various climatic and environmental factors. For each factor, preindustrial forcing at 1850 (PI) or transient datasets (Tr) are used.

Case names	Controlling factors				
	Atmospheric CO <sub>2</sub>	Nitrogen deposition	Wetland areal extent	Climate	Land-use and land-cover change
BASE	Tr	Tr	Tr	Tr	Tr
PI_CO2	PI	Tr	Tr	Tr	Tr
PI_NDEP	Tr	PI	Tr	Tr	Tr
PI_CLIM	Tr	Tr	Tr	PI	Tr
PI_PRECIP	Tr	Tr	Tr	Tr <sup>c</sup>	Tr
PI_LULCC	Tr	Tr	Tr	Tr	PI
PI_WETL	Tr	Tr	PI <sup>a</sup>	Tr	Tr
PI <sup>b</sup>	PI	PI	PI <sup>a</sup>	PI	PI
CURR <sup>d</sup>	Tr	Tr	Tr-Sat <sup>e</sup>	Tr	Tr

<sup>a</sup> Preindustrial wetland areal extent is estimated based on the inventories from the literature; however, transient wetland areal extent is calculated using CLM4.5.

<sup>b</sup> Preindustrial simulation over the period 1850–1869, in which we fix CO<sub>2</sub> concentration, nitrogen deposition, wetland inundation fraction and land-use and land-cover change at their 1850 values and we use a subset of the 20 year meteorological forcing from 1901 to 1920.

<sup>c</sup> Transient climate forcing data is used except for precipitation where a subset of 20 year precipitation data from 1901 to 1920 is cycled.

<sup>d</sup> CURR simulation is performed for the period of 1993–2004.

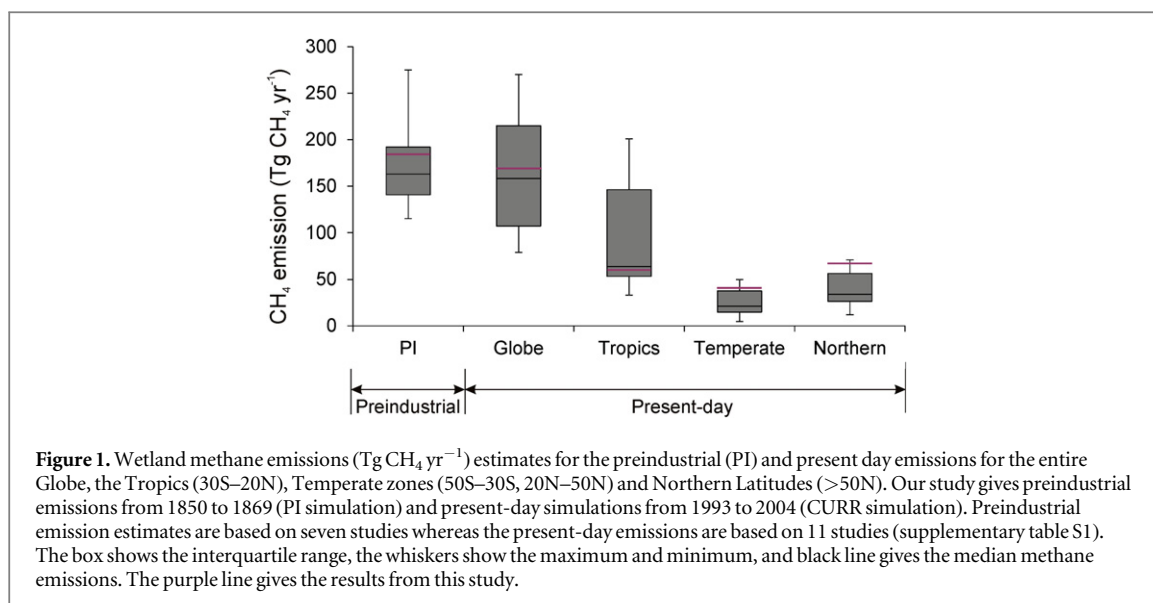
<sup>e</sup> Tr-Sat represents the multi-satellite observations of wetland inundation extent for 1993–2004 (Prigent *et al* 2007).

Therefore, to disentangle the impacts of each climatic and environmental factor (e.g., atmospheric CO<sub>2</sub> concentrations, nitrogen deposition, wetland areal extent, precipitation, temperature, and land-use and land-cover change) on wetland methane emissions, we conduct model simulations over the period 1850–2005 using a simple sensitivity analysis approach (table 1). The initial state (1850) of the terrestrial carbon-nitrogen state variables within the CLM is generated using the standard spin-up procedure (Oleson *et al* 2013) bringing the carbon-nitrogen cycles close to steady-state conditions when the forcing datasets such as atmospheric CO<sub>2</sub>, nitrogen deposition, aerosol deposition, land-use and land-cover change, and wetland inundation fraction, are held fixed at their 1850 values. For transient simulations from 1850 through 2005, we prescribe transient atmospheric CO<sub>2</sub> (as used by Randerson *et al* 2009), nitrogen deposition (Lamarque *et al* 2005), aerosol deposition (Lawrence *et al* 2011), and land-use and land-cover change (including harvest) (Hurtt *et al* 2006, Lawrence *et al* 2012). The transient climate data uses the 113 year (1901–2012) CRUNCEP reanalysis atmospheric forcing dataset, interpolated to a ½ h time step from a 6 h time step ([http://dods.extra.cea.fr/store/p529viov/cruncep/V4\\_1901\\_2012/](http://dods.extra.cea.fr/store/p529viov/cruncep/V4_1901_2012/)). The CRUNCEP is a combination of the CRU TS3.2 0.5° × 0.5° monthly climatology covering the period from 1901 to 2012 and the 2.5° × 2.5° NCEP reanalysis datasets available for 1948–2010 (Oleson *et al* 2013). Prior to 1901 the 20 year subset of the transient climate dataset (1901–1920) is repeatedly cycled.

The BASE simulation (i.e., the control simulation, table 1) is driven by transient CO<sub>2</sub> concentrations, nitrogen deposition, land-use and land-cover change,

and climate from 1850 to 2005. Since the wetland methane emissions are highly uncertain (Kirschke *et al* 2013) we use current climate as our base simulation to evaluate the relative changes between pre-industrial and present-day. In the PI\_CO2, PI\_NDEP, and PI\_LULCC simulations (PI = Pre-Industrial), the climate forcing is unchanged from the BASE simulation, but the CO<sub>2</sub> concentration, nitrogen deposition, and land-use and land-cover change are held fixed at their 1850 values. In the PI\_CLIM simulation, we repeatedly cycle the 20 year (1901–1920) climate data from 1850 to 2004, but the other transient forcing datasets are the same as the BASE simulations. In the PI\_PRECIP simulation, precipitation data from 1901 to 1920 is cycled, but the remaining climate forcing data such as solar radiation, temperature, specific humidity, air pressure, and wind are allowed to vary throughout the simulation period. Of course, in the real atmosphere, changes in meteorological forcings will occur simultaneously. However, these sensitivity studies allow a separation of the different mechanisms driving methane changes, and thus can be illuminating. The PI\_WETL simulation uses the same transient forcing as the BASE simulation except preindustrial wetland extent is used, as explained in detail below. In addition we conduct a PI simulation from 1850 to 1869 by fixing all the forcing at preindustrial values in 1850 (see table 1) and using the 1901–1920 climate forcing data. The preindustrial wetland fraction is also used in the PI simulation.

Except for the PI\_WETL and PI simulations all simulations use the model-calculated transient wetland inundation fraction from 1850 to 2005. In these simulations the model calculated inundation fraction is tuned following the methodology of Riley *et al* (2011) to the current wetland extent, so that the tuned



inundation matches as closely as possible the inundation fraction derived from multi-satellite observations (Prigent *et al* 2007) for the time period available 1993–2004 (see supplementary figure S1a). Although we calculate the transient wetland inundation fraction using a prognostic analysis based on changes in surface hydrology (e.g., surface runoff and water table depth), the lack of ability to simulate all inundation processes (such as flooding across multiple grid cells) might underestimate some of our attributions. Since pre-industrial time humans have modified the wetland hydrology particularly by converting wetlands for development and agricultural activities, which directly reduced the overall wetland area. To evaluate the impact of the changes in wetland extent from human changes in hydrology, we estimate the preindustrial wetland extent based on existing studies of wetland loss data since the preindustrial (supplementary materials and figure S1b). In the PI\_WETL and PI simulations a fixed preindustrial wetland extent is used. The CURR simulation is driven by transient datasets from 1993 to 2004. We specify satellite measured wetland inundation fraction available for the period from 1993 to 2004.

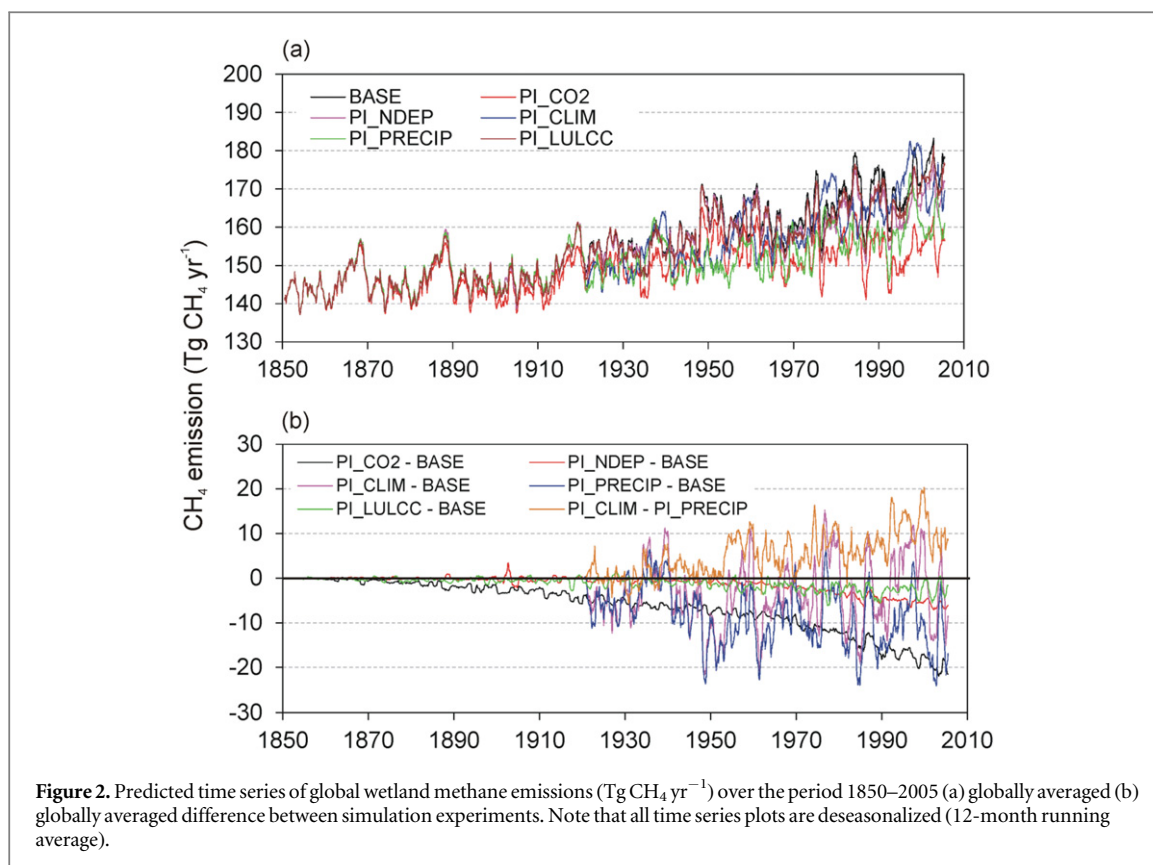
We estimate preindustrial inundated wetland area to be  $4.36 \times 10^6 \text{ km}^2$  based on the literature (supplementary materials), 34% higher than the present-day estimates derived from multi-satellite observations of  $3.25 \times 10^6 \text{ km}^2$  (Prigent *et al* 2007). Chappellaz *et al* (1993) estimated an approximately 20% larger areal wetland extent during the preindustrial time than today while Zedler and Kercher (2005) estimated the global wetland extent was 34% larger during the pre-industrial due to wetland drainage for agricultural use. Other studies estimated that about 50% of the global wetland area has been lost as a result of human activities (Dugan 1993, OECD 1996) with much of the loss occurring in the northern midlatitudes (30N–60N). Uncertainties in the estimates of wetland loss are high

as estimates of historical wetland area are crude, at best: only a few countries have accurate maps and information with regard to wetland extent a century or two ago (Zedler and Kercher 2005), and our estimate lies within the published range.

### 3. Results

#### 3.1. Comparison with other studies

To assess the performance of our model, we compare the preindustrial and the present-day annual average methane emissions from natural wetlands with existing studies using the PI and CURR simulations (figure 1, supplementary table S1). Although there remains a considerable uncertainty in global wetland emissions, our preindustrial estimates ( $187 \text{ Tg CH}_4 \text{ yr}^{-1}$ ) fall well within the range of emissions ( $115\text{--}275 \text{ Tg CH}_4 \text{ yr}^{-1}$ ) reported by previous studies. These studies have used different approaches to estimate preindustrial emissions: for example estimating the preindustrial methane sources by determining their consistency with atmospheric concentrations (Chappellaz *et al* 1993); employing a three-dimensional chemistry transport model and using methane mixing ratios and  $\delta^{13}\text{CH}_4$  from ice cores as constraints to quantify the source strengths (Houweling *et al* 2000, Mischler *et al* 2009, Monteil *et al* 2011; see table S1c), and process-based modeling (e.g., Ringeval *et al* 2013). Our present-day methane emissions are estimated to be  $174 \text{ Tg CH}_4 \text{ yr}^{-1}$  for 1993–2004, also within the range of current estimates ( $80\text{--}270 \text{ Tg CH}_4 \text{ yr}^{-1}$ ) (figure 1). Our estimates are particularly close to current estimates by Bloom *et al* (2010), and Bousquet *et al* (2006); but lower than the estimates by Riley *et al* (2011) and Meng *et al* (2012) who used an older version of CLM (the CLM4-CN model). The large variation in estimated global emissions is not surprising, as these studies used different methodologies to



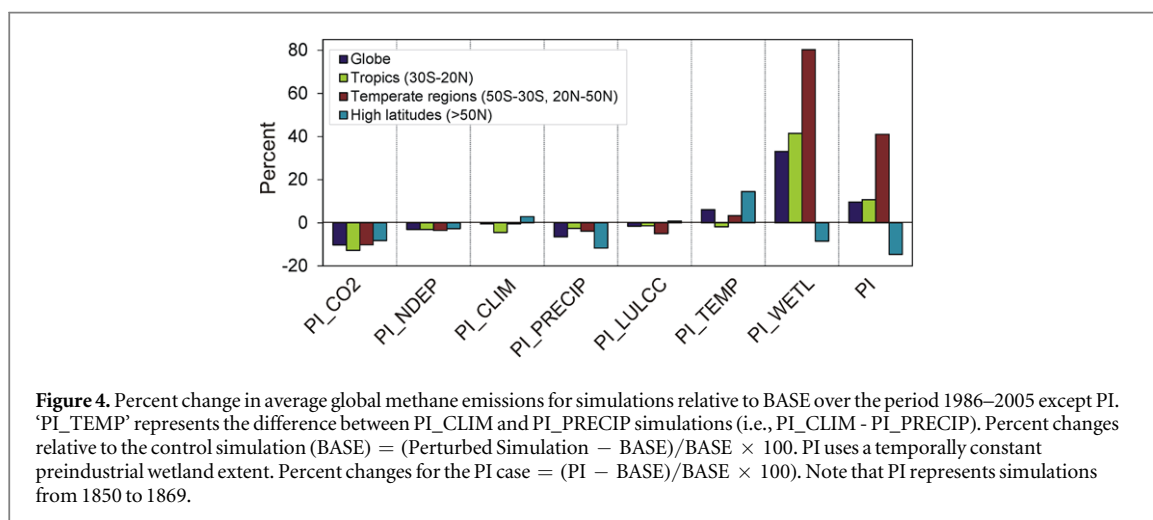
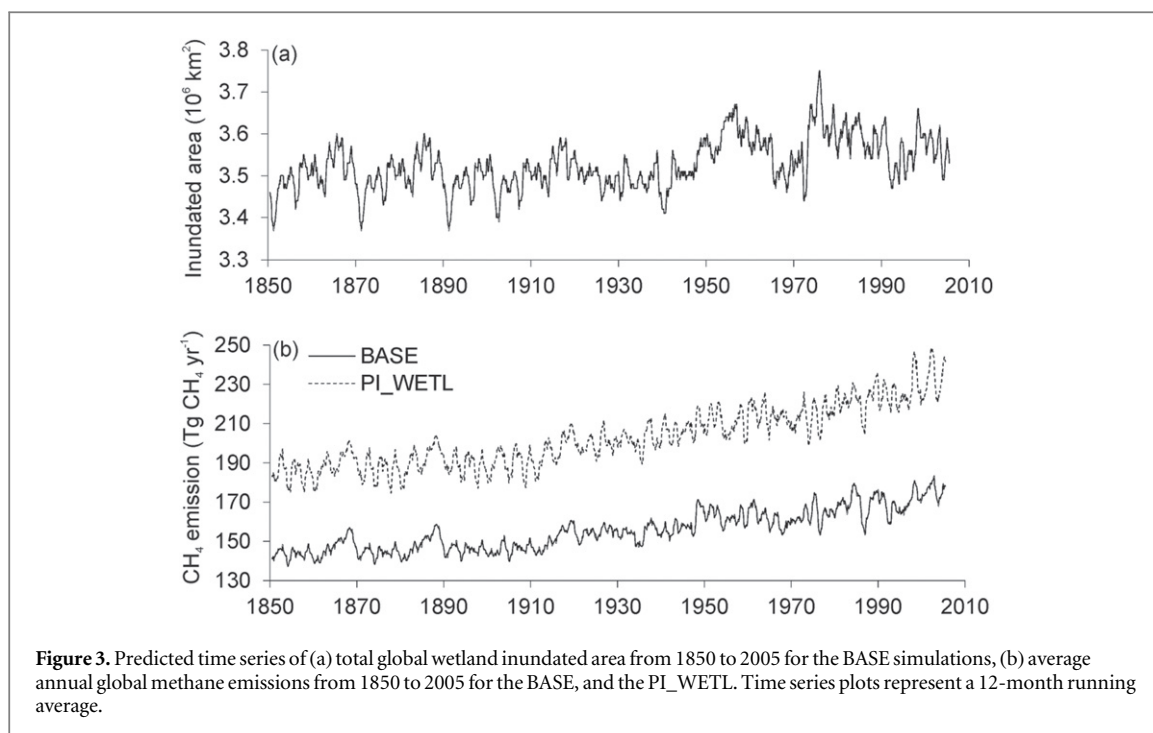
calculate inundated wetland extent (Melton *et al* 2013), and different modeling approaches to predict wetland methane emissions. For example, Matthews and Fung (1987) used a constant global wetland distribution from a wetland inventory and estimated the resulting methane fluxes, Cao *et al* (1996) and Walter *et al* (2001) used process-based model using global wetland distribution from Matthews and Fung (1987), while Bousquet *et al* (2006) and Bloom *et al* (2010) used a top-down approach where wetland extent is not explicitly utilized.

The present-day emissions over different latitudinal regions estimated in the current study also fall within the range of previous estimates (figure 1); however, our emissions are close to the upper bound of estimates in the temperate zone (20N–50N and 50S–30S) and in the high latitudes (>50N) and slightly lower than the median value in the tropics (30S–20N). The relatively high emissions in the high latitudes and low emissions in the tropics compared to previous versions with the same model (CLM4-CN; Riley *et al* 2011, Meng *et al* 2012) are consistent with the changes in the simulation of productivity in the CLM4.5-BGC (see Meng *et al* 2015): compared to the previous version of the CLM, the CLM4.5-BGC has increased ecosystem productivity in high latitudes and reduced productivity in the tropics (Koven *et al* 2013). Overall, these results suggest that there is still considerable uncertainty in the estimates of wetland methane emissions with some of the uncertainty due to the model simulation of the carbon cycle.

### 3.2. Changes in methane emissions

The temporal evolution of annual average global wetland methane emissions for all simulations except PI\_WETL and PI from 1850 to 2005 is given in figure 2(a), with differences between simulations given in figure 2(b). Significant interannual temporal variability is evident in all simulations. The PI\_CO2 simulation shows the smallest increase in methane emissions followed by PI\_PRECIP. Elevated CO<sub>2</sub> concentration tends to increase the methane emissions monotonically over the period of simulation (*viz.* PI\_CO2—Base, figure 2(b)). Although both increasing nitrogen deposition and land-use and land-cover change increase methane emissions from 1850 to 2005, the difference in emissions between BASE and these simulations is relatively small (figure 2(b)). Simulations with transient climate include both changes in temperature and changes in precipitation. We investigate the effects of varying temperature alone on methane emissions for 1850–2005 by evaluating the output from PI\_CLIM minus PI\_PRECIP (hereafter referred to as PI\_TEMP).

Using sensitivity studies we quantify the role of several controlling mechanisms in determining changes in present-day global methane emissions from the preindustrial period. The sensitivity to preindustrial wetland extent is evaluated in the PI\_WETL simulation. Assuming the present-day wetland extent is the same as the preindustrial gives present day (1886–2005) globally averaged emissions (PI\_WETL) that are  $56 \text{ Tg CH}_4 \text{ yr}^{-1}$  higher than the BASE



simulation (a 33% increase) (figures 3 and 4), with a larger increase in methane fluxes in the northern temperate zone (79%) and smaller reduction in the high latitudes (9%), consistent with changes in wetland areal extent (e.g., draining and converting wetlands for agricultural, residential and other uses) during the twentieth century (Dugan 1993, Lehner and Doll 2004), as discussed in section 2.

Accounting for changes in both wetland area and the various forcing factors since the preindustrial (table 1), the simulated preindustrial wetland emissions (simulation PI) are approximately 10% larger than the present-day (1986–2005) emissions in the BASE simulation. The emissions in the temperate zones are significantly higher (41%); they are modestly higher in the tropics (11%), but 15% lower in the high latitudes (figure 4). Our global emissions changes from preindustrial are consistent with estimates from

previous studies. Houweling *et al* (2000) reported present-day wetland emissions to be ~10% smaller than preindustrial emissions due to changes in forcing factors and wetland extent. Similarly, Chappellaz *et al* (1993) reported 15% smaller wetland emissions today than in the pre-industrial Holocene due to changes in wetland extent.

The sensitivity to changes in CO<sub>2</sub> is evaluated using the PI\_CO2 simulation. In the case where preindustrial CO<sub>2</sub> levels are used (PI\_CO2), the total global methane emissions decrease by 17.4 Tg CH<sub>4</sub> yr<sup>-1</sup> compared to those in the present day BASE simulation, which is equivalent to the 10% reductions from the BASE simulation. The highest percentage reduction occurs in the tropics (13%), and the lowest in the high latitudes (8%). CO<sub>2</sub> affects methane emissions primarily through the changes in amount of biomass available for decomposition (Van Groenigen

*et al* 2011, Cox *et al* 2013). Enhanced plant growth due to increasing CO<sub>2</sub> increases the amount of soil organic matter due to the stimulation of plant and litter biomass production (Berendse *et al* 2001, Reich *et al* 2001), which in turn can increase methane production (Whiting and Chanton 1993, Van Groenigen *et al* 2011). Elevated CO<sub>2</sub> may stimulate methane fluxes in a direct proportion to net plant photosynthesis (Megonigal *et al* 2004). The emission enhancements with increased CO<sub>2</sub> are consistent with enhanced growth from CO<sub>2</sub> fertilization effects (Gifford 1994, Long *et al* 2004). Van Groenigen *et al* (2011) shows an increase in methane emissions due to increased CO<sub>2</sub> concentration using meta-analysis. Although the CO<sub>2</sub> fertilization of this model has not yet been calculated within a coupled model context, based on a recent model intercomparison (Arora *et al* 2013), models with nitrogen limitation tend to have lower CO<sub>2</sub> fertilization effects than models without it. Thus, we expect the impact of CO<sub>2</sub> fertilization estimated here will be lower than land models that do not incorporate the nitrogen limitation. For example, Ringeval *et al* (2011) reports an increase of 134% in global wetland emissions from preindustrial time (1860–1869) by the end of the 21st century in response to increasing CO<sub>2</sub> (SRES-A2 scenario) using ORCHIDEE-WET model. This corresponds to a 0.23% increase in methane emissions per ppmv increase in CO<sub>2</sub> concentration, which is 0.11% per ppmv larger than this study. Their carbon-only model does not account for the nitrogen limitation, which may lead to their estimates higher than ours.

Changing the amount of nitrogen deposition or the amount of forest vs. crop areas (PI\_NDEP and PI\_LULCC cases) results in small reductions of global emissions by 4.2 and 2.7 Tg CH<sub>4</sub> yr<sup>-1</sup> (−3% and −2%) relative to the BASE simulation. Increased nitrogen deposition may influence the methane emissions through positive effects on plant growth (similar to CO<sub>2</sub> effects) and therefore the amount of available soil organic matter for decomposition (Berendse *et al* 2001, Reich *et al* 2001). In PI\_LULCC simulation, changes in methane emissions are due to the changes in the carbon cycle but not directly through changes in wetland extent. Since CLM4.5 does not have a wetland representation the biogeochemical impacts of LULCC are simulated through changes in carbon pool and fluxes.

Climate effects on methane emissions are complex, with the effects of precipitation and temperature slightly offsetting each other. In PI\_CLIM there is a reduction in global methane emissions by 0.5% at present day (1986–2005) compared to the BASE simulation; however, high-latitude emissions are increased by 3%. In contrast, the preindustrial temperature (PI\_TEMP) simulation increases global emissions by 6% compared to the BASE simulation, which represents a large increase in high-latitude emissions of 15%, and a smaller decrease in tropical emissions of 2%, emphasizing the role of cooler temperatures in

high latitudes in generating more methane fluxes. This is likely due to the lowered water tables in the unsaturated portions of the gridcell and a nearly constant trend in saturated inundated area in response to the preindustrial temperature (figures S6 and S7), resulting in a higher methane oxidation from the soil. If only precipitation is changed (PI\_PRECIP), global emissions are decreased by 7% compared to the BASE simulation, including a 3% decrease in the tropics and 12% decrease in the high latitudes. Between the present-day time period and the preindustrial precipitation increased by 10.5% in high latitudes, 4.5% in the northern temperate zone and 2% in the tropics.

While these results are roughly consistent with previous studies (e.g. Cao *et al* 1998, Gedney *et al* 2004, Shindell *et al* 2004, Eliseev *et al* 2008, Volodin 2008, Ringeval *et al* 2011), our study is the first to evaluate the relative contributions of these processes for current climate. These studies are generally focused on evaluating the future impacts of changing CO<sub>2</sub> and climate, but did not include the effects of nitrogen limitations, and therefore overestimating terrestrial carbon uptake (i.e., increasing the CO<sub>2</sub> fertilization effect). Also, these studies did not examine the effects of human changes in wetland extent, nitrogen deposition, and land-use-land-cover change on methane emissions from preindustrial to current.

### 3.3. Spatial patterns

The spatial pattern of annually average methane emissions for preindustrial time (1850–1869) and present day (1986–2005) is broadly consistent with previous estimates of preindustrial (Ringeval *et al* 2013) and current (Walter *et al* 2001, Bloom *et al* 2010) emissions (figures 5(a) and (b)). Results show the largest emissions over Southeast Asia, the boreal region of North America, northern Europe, central Siberia and some places of South America during the present day. Since the preindustrial period, humans have mostly altered wetlands in the northern tropics and temperate zone (10N–40N; Lehner and Doll 2004), which has resulted in large reductions in methane emissions in this region (figures 5(a) and (b)).

There are spatial heterogeneities in the responses to different forcing factors. In these simulations, CO<sub>2</sub> has the largest impacts on tropical emissions, particularly in Southeast Asia (figure 5(c)). Changes in climatic variables have both positive and negative spatial contributions to methane emissions (figure 5(e)). A similar heterogeneous pattern can be seen in the response to precipitation (figure 5(f)) (PI\_PRECIP), with a decrease in emissions in eastern Siberia, mid- and high latitudes regions of North America, but increases in the western Siberia boreal region and in most places in Africa. Precipitation has decreased since the preindustrial period in most places of Africa and increased in mid- and high latitudes regions of North America and Western Europe (supplementary



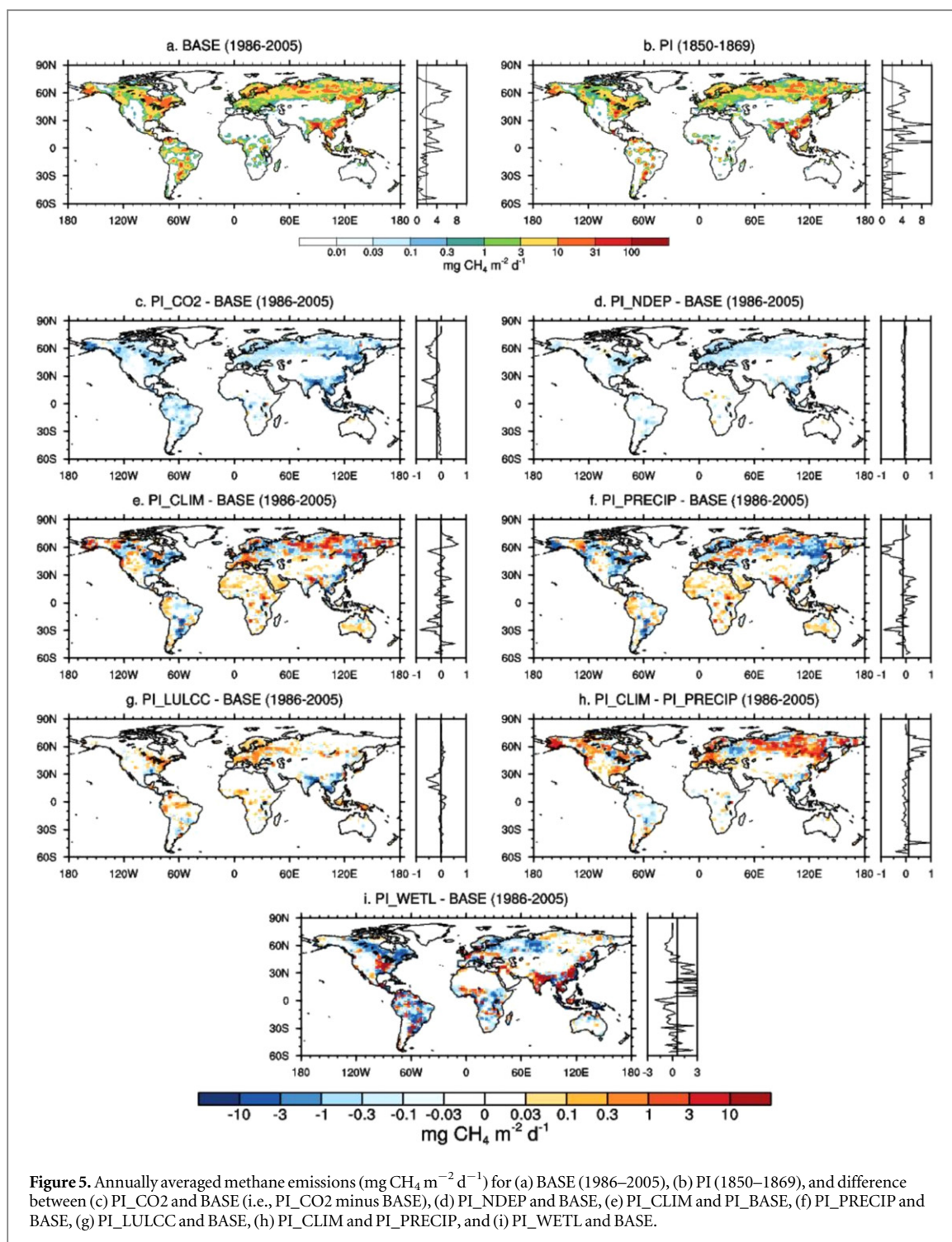
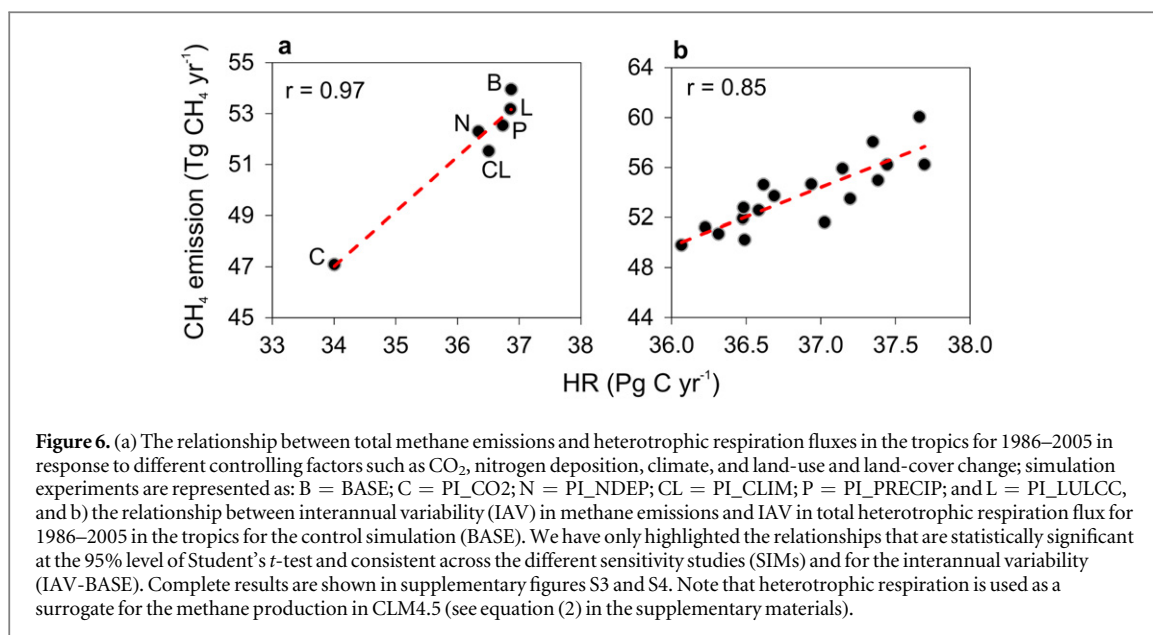


figure S2); these precipitation changes are consistent with changes in methane emissions. On the other hand, temperature shows a strong influence on the high-latitude methane emissions with considerable differences in Alaska, most of Siberia, and Western Europe (figure 5(h)). Changes in land-use and land-cover change (PI\_LULCC) result in reduced emissions particularly in Southeast Asia. The larger areal wetland extent during preindustrial time particularly within the northern hemisphere (e.g., Southeast Asia, Central America, and Western Europe) results in a locally large changes in methane emissions (figure 5(g)).

### 3.4. Relationship between methane emissions and potential drivers (substrate production, inundated area, near-surface temperature, and precipitation)

Methane emissions from wetlands have significant inter-annual variability depending on changes in substrate production for methanogenesis and changes in inundated area, as well as on the partitioning between methane and carbon dioxide emissions. It is straightforward to understand how changes in inundated area affect methane fluxes (e.g. Ringeval *et al* 2010, Watts *et al* 2014) as, all else equal, a larger inundated area directly produces a larger methane



flux. The inundated area and substrate production rate are in turn impacted by changes in the forcing variables (e.g., temperature and precipitation). To better understand how different factors impact methane fluxes, we examine the relationship between methane emissions and their potential drivers in the model in two ways (1) the relationship between globally averaged methane emissions and changes in forcing between the different sensitivity simulations (hereafter referred to as SIMs), and (2) the relationship between IAV in the BASE simulation and variations in drivers over the period 1986–2005 (hereafter referred to as IAV-BASE). In the model, we describe heterotrophic respiration as a proxy for methanogenesis substrate production, which represents the dominant long-term control on methane production variability. Since we do not have a wetland representation that includes details related to methane production, we assumed that the production in the anaerobic portion of the soil column is related to the gridcell estimate of heterotrophic respiration from soil and litter as used by other studies (Wania *et al* 2010, Spahni *et al* 2011, Zhu *et al* 2014). In these studies, soil carbon for methanogenesis is considered as a fraction of soil heterotrophic respiration. Therefore we refer to this sensitivity analysis with the term 'substrate production'. The relationship between the drivers and the IAV is presented in the supplement (figure S4 and table S4).

Figure 6(a) presents the statistically significant relationships that drive the methane emissions in both IAV and across the various sensitivity studies. In the sensitivity studies the only significant correlation is between the methane emissions and heterotrophic respiration in the tropics ( $r = 0.97$ ,  $p < 0.05$ ) (figure 6(a)). This result suggests that changes in tropical methane emissions are mainly mediated by changes in tropical substrate production in response to

changes in CO<sub>2</sub>, nitrogen deposition, climate, and land-use and land-cover change. This result is consistent with the drivers of IAV derived from IAV-BASE for the tropics ( $r = 0.85$ ,  $p < 0.05$ ) (figure 6(b)), confirming results from the IAV simulation. Besides the correlation between tropical methane emissions and substrate production in the SIMs, the next highest correlations are between methane emissions and substrate production in the northern temperate zone ( $r = 0.57$ ,  $p > 0.05$ ) and methane emissions and surface temperature in the high latitudes ( $r = 0.52$ ,  $p > 0.05$ ) (figure S3). However, both these latter two correlations are statistically insignificant.

#### 4. Conclusions

Our simulated preindustrial global wetland emissions ( $187 \text{ Tg CH}_4 \text{ yr}^{-1}$ ) are approximately 10% larger than present-day emissions, with significantly higher emissions in the temperate zones (41%), and modestly higher in the tropics (11%), but 15% lower in the high latitudes. Our preindustrial global estimates are consistent with estimates by Houweling *et al* (2000) and Chappellaz *et al* (1993). Differences between present-day and prehistoric emissions are driven by changes in wetland extent and in various forcing variables, including CO<sub>2</sub>, nitrogen deposition, precipitation, temperature, and land-use and land-cover change. Thus, to a first approximation, natural emissions of methane from wetlands have remained constant since the preindustrial period, suggesting the observed increases in methane concentrations can almost exclusively be attributed to changes in anthropogenic emissions. However, the constancy of emissions is the result of two competing factors: the change in wetland areal extent has decreased the present day emissions

relative to the preindustrial while various environmental forcings have acted to increase the emissions.

Here we attribute for the first time the different factors that change the preindustrial wetland methane emissions compared to those from the current climate. Sensitivity studies suggest that atmospheric CO<sub>2</sub> have increased present day methane emissions by 17.4 Tg CH<sub>4</sub> yr<sup>-1</sup> (+10%) compared to the preindustrial. The mechanism whereby higher CO<sub>2</sub> drives higher methane fluxes has been noted previously (Gedney *et al* 2004, Shindell *et al* 2004), although we know of no study that has quantified this impact between the preindustrial and present day. Shindell *et al* (2005) report a ~0.22% increase in global methane emissions per ppmv increase in CO<sub>2</sub> while Gedney *et al* (2004) reports a ~0.28% increase in emissions per ppmv CO<sub>2</sub> increase for the IS92a scenario. However, our study shows a substantially lower response: a 0.12% increase in emissions per ppmv increase in CO<sub>2</sub>. Our model is likely to be less sensitive than previous estimates because of the nitrogen limitation on the CO<sub>2</sub> fertilization effect included in this model (Thornton *et al* 2009, Arora *et al* 2013, Koven *et al* 2013). Nitrogen deposition and land-use and land-cover change effects are found to contribute modestly to increases in present day emissions (+3% and +2%) but could be important regionally. For example, most of the impacts in response to land-use and land-cover change occur in Southeast Asia.

The combined effects of climate on methane emissions are small, but the effects of temperature and precipitation individually are larger and partially offsetting. Precipitation changes from preindustrial to present day tend to increase both tropical emissions (3%), and high-latitude emissions (12%), while temperature changes tend to decrease high-latitude emissions (15%) but increase tropical emissions (2%).

The most important factor in the change in methane wetland fluxes from the preindustrial is due to conversion of wetlands to drylands by humans. We find the present-day emissions would be 33% higher without the conversion of wetlands to drylands. Most of the conversion of wetlands occurs in northern temperate zone (Chappellaz *et al* 1993, Dugan 1993). We find the largest change in wetland emissions from the preindustrial occurs in the northern temperate zone (-79%) with smaller changes in the high latitudes (+9%).

While the importance of changes in inundation to the wetland methane fluxes are well established (e.g., Ringeval *et al* 2010), we consider how other climatic and environmental factors impact the methane fluxes. More than half (54%) of the year-year IAV in methane emissions is explained by the variation in substrate production, with stronger relationships in the tropics than other regions. The relationship between IAV in inundated wetland extent and IAV in methane emissions is high (statistically significant at 95% level of Student's *t* test) in the tropics but weak in the northern

temperate zone and high latitudes. We find that the long-term change in methane fluxes from the various forcing agents (changes in CO<sub>2</sub>, nitrogen deposition, climate, and land-use and land-cover change) is mostly mediated through changes in long-term substrate production in determining the long-term change in wetland methane emissions between the various simulations.

There are many uncertainties in quantifying the effects of the controlling factors on methane emissions. These uncertainties may arise from several factors, including: (1) CLM4.5-BGC does not simulate wetland plant functional types and a separate carbon cycle submodel for wetlands (Oleson *et al* 2013) which could potentially impact the CO<sub>2</sub> fertilization effect and other methane transport processes through plant aerenchyma, (2) there is substantial uncertainty in the methane fluxes predicted in the methane module based on uncertainties in the choice of parameter values (Riley *et al* 2011), (3) methane emission is dependent on the temporal variability predicted in the carbon and land model, especially on the substrate production rate, therefore errors associated with the carbon model component could propagate to the methane model and affect emissions (Meng *et al* 2015). Finally, the estimation of inundation area, both as a function of climate and through human modification, is difficult. Despite these uncertainties, our findings have implications for understanding of the evolution of wetland emissions, the attribution of historic methane changes and predicting methane changes more accurately in the future in response to changes in climatic and environmental conditions. Improved understanding of the attribution of radiatively important gases is important for understanding past climate change (e.g., Ciais *et al* 2013) and projecting future feedbacks.

## Acknowledgment

The authors wish to acknowledge the assistance of Drs Sean Swenson and David Lawrence from National Center for Atmospheric Research for some code modifications in CLM4.5. We would also like to thank Dr Catherine Prigent for providing multi-satellite observations of wetland inundation fraction. This research was supported by the DE-SC0006791, NSF 1049033, and the Director, Office of Science, Office of Biological and Environmental Research of the US Department of Energy under Contract No. DE-AC02-05CH11231 as part of the Regional and Global Climate Modeling (RGCM) program. Any opinions, findings and conclusions or recommendations expressed in this material are those of the author(s) and do not necessarily reflect the views of the Everglades Foundation.

## References

- Allen M R, Frame D J, Huntingford C, Jones C D, Lowe J A, Meinshausen M and Meinshausen N 2009 Warming caused by cumulative carbon emissions towards the trillionth tonne *Nature* **458** 1163–6
- Arora V K *et al* 2013 Carbon–concentration and carbon–climate feedbacks in CMIP5 Earth system models *J. Clim.* **26** 5289–314
- Berendse F *et al* 2001 Raised atmospheric CO<sub>2</sub> levels and increased N deposition cause shifts in plant species composition and production in Sphagnum bogs *Glob. Change Biol.* **7** 591–8
- Bloom A A, Palmer P I, Fraser A, Reay D S and Frankenberg C 2010 Large-scale controls of methanogenesis inferred from methane and gravity spaceborne data *Science* **327** 322–5
- Bohn T J *et al* 2015 WETCHIMP-WSL: intercomparison of wetland methane emissions models over West Siberia *Biogeosciences* **12** 3321–49
- Bohn T J, Lettenmaier D P, Sathulur K, Bowling L C, Podest E, McDonald K C and Friborg T 2007 Methane emissions from western Siberian wetlands: heterogeneity and sensitivity to climate change *Environ. Res. Lett.* **2** 45015
- Bonan G B, Hartman M D, Parton W J and Wieder W R 2013 Evaluating litter decomposition in earth system models with long-term litterbag experiments: an example using the Community Land Model Version 4 (CLM4) *Glob. Change Biol.* **19** 957–74
- Bousquet P *et al* 2006 Contribution of anthropogenic and natural sources to atmospheric methane variability *Nature* **443** 439–43
- Cao M, Gregson K and Marshall S 1998 Global methane emission from wetlands and its sensitivity to climate change *Atmos. Environ.* **32** 3293–9
- Cao M, Marshall S and Gregson K 1996 Global carbon exchange and methane emissions from natural wetlands: Application of a process-based model *J. Geophys. Res. Atmos.* **101** 14399–414
- Chappellaz J A, Fung I Y and Thompson A M 1993 The atmospheric CH<sub>4</sub> increase since the Last Glacial Maximum *Tellus B* **45** 228–41
- Christensen T R, Ekberg A, Strom L, Mastepanov M, Panikov N, Oquist M, Svensson B H, Nykanen H, Martikainen P J and Oskarsson H 2003 Factors controlling large scale variations in methane emissions from wetlands *Geophys. Res. Lett.* **30** 1414
- Ciais P, Gasser T, Paris J D, Caldeira K, Raupach M R, Canadell J G, Patwardhan A, Friedlingstein P, Piao S L and Gitz V 2013 Attributing the increase in atmospheric CO<sub>2</sub> to emitters and absorbers *Nat. Clim. Change* **3** 926–30
- Cox P M, Pearson D, Booth B B, Friedlingstein P, Huntingford C, Jones C D and Luke C M 2013 Sensitivity of tropical carbon to climate change constrained by carbon dioxide variability *Nature* **494** 341–4
- Dugan P 1993 *Wetlands in Danger: A World Conservation Atlas* (New York: Oxford University Press)
- Eliseev A V, Mokhov I I, Arzhanov M M, Demchenko P F and Denisov S N 2008 Interaction of the methane cycle and processes in wetland ecosystems in a climate model of intermediate complexity *Izv. Atmos. Ocean. Phys.* **44** 139–52
- Fabbri L T, Rua G H and Bartoloni N 2005 Different patterns of aerenchyma formation in two hygrophytic species of *Paspalum* (Poaceae) as response to flooding *Flora* **200** 354–60
- Gao X, Schlosser C A, Sokolov A, Walter Anthony K, Zhuang Q and Kicklighter D 2013 Permafrost degradation and methane: low risk of biogeochemical climate warming feedback *Environ. Res. Lett.* **8** 035014
- Gedney N, Cox P M and Huntingford C 2004 Climate feedback from wetland methane emissions *Geophys. Res. Lett.* **31** L20503
- Gifford R M 1994 The global carbon cycle: a viewpoint on the missing sink *Funct. Plant Biol.* **21** 1–15
- Granberg G, Sundh I, Svensson B H and Nilsson M 2001 Effects of temperature, and nitrogen and sulfur deposition, on methane emission from a boreal mire *Ecology* **82** 1982–98
- Houweling S, Dentener F and Lelieveld J 2000 Simulation of preindustrial atmospheric methane to constrain the global source strength of natural wetlands *J. Geophys. Res.* **105** 17243–55
- Hurrell J W *et al* 2013 The community earth system model: a framework for collaborative research *Bull. Am. Meteorol. Soc.* **94** 1339–60
- Hurttt G C, Frolking S, Fearon M G, Moore B, Shevliakova E, Malyshev S, Pacala S W and Houghton R A 2006 The underpinnings of land-use history: Three centuries of global gridded land-use transitions, wood-harvest activity, and resulting secondary lands *Glob. Change Biol.* **12** 1208–29
- IPCC 2013 *Summary for policymakers, Climate Change 2013: The Physical Science Basis* ed T F Stocker *et al* (Cambridge: Cambridge University Press)
- Knox S H, Sturtevant C, Matthes J H, Koteen L, Verfaillie J and Baldocchi D 2014 Agricultural peatland restoration: effects of land-use change on greenhouse gas (CO<sub>2</sub> and CH<sub>4</sub>) fluxes in the Sacramento-San Joaquin Delta *Glob. Change Biol.* **21** 750–65
- Kirschke S *et al* 2013 Three decades of global methane sources and sinks *Nat. Geosci.* **6** 813–23
- Koven C D, Lawrence D M and Riley W J 2015 Permafrost carbon-climate feedback is sensitive to deep soil carbon decomposability but not deep soil nitrogen dynamics *Proc. Natl Acad. Sci. USA* **112** 3752–7
- Koven C D, Riley W J, Subin Z M, Tang J Y, Torn M S, Collins W D, Bonan G B, Lawrence D M and Swenson S C 2013 The effect of vertically resolved soil biogeochemistry and alternate soil C and N models on C dynamics of CLM4 *Biogeosciences* **10** 7109–31
- Lamarque J-F *et al* 2005 Assessing future nitrogen deposition and carbon cycle feedback using a multimodel approach: Analysis of nitrogen deposition *J. Geophys. Res. Atmos.* **110** D19303
- Lawrence D M *et al* 2011 Parameterization improvements and functional and structural advances in version 4 of the Community Land Model *J. Adv. Model. Earth Syst.* **3** M03001
- Lawrence P J *et al* 2012 Simulating the biogeochemical and biogeophysical impacts of transient land cover change and wood harvest in the community climate system model (CCSM4) from 1850 to 2100 *J. Clim.* **25** 3071–95
- Lehner B and Doll P 2004 Development and validation of a global database of lakes, reservoirs and wetlands *J. Hydrol.* **296** 1–22
- Long S P, Ainsworth E A, Rogers A and Ort D R 2004 Rising atmospheric carbon dioxide: plants FACE the future *Annu. Biol.* **55** 591–628
- Maltby E and Immirzi P 1993 Carbon dynamics in peatlands and other wetland soils regional and global perspectives *Chemosphere* **27** 999–1023
- Matthews E and Fung I 1987 Methane emission from natural wetlands: Global distribution, area, and environmental characteristics of sources *Glob. Biogeochem. Cycles* **1** 61–86
- Megonigal J P, Hines M E and Visscher P T 2004 Anaerobic metabolism: linkages to trace gases and aerobic processes *Biogeochemistry* ed W H Schlesinger (Oxford: Elsevier–Pergamon) pp 317–424
- Melton J R *et al* 2013 Present state of global wetland extent and wetland methane modelling: conclusions from a model inter-comparison project (WETCHIMP) *Biogeosciences* **10** 753–88
- Meng L, Hess P G M, Mahowald N M, Yavitt J B, Riley W J, Subin Z M, Lawrence D M, Swenson S C, Jauhainen J and Fuka D R 2012 Sensitivity of wetland methane emissions to model assumptions: application and model testing against site observations *Biogeosciences* **9** 2793–819
- Meng L, Paudel R, Hess P G M and Mahowald N M 2015 Seasonal and interannual variability in wetland methane emissions simulated by CLM4Me’ and CAM-chem and comparisons to observations of concentrations *Biogeosciences* **12** 4029–49
- Mischler J A, Sowers T A, Alley R B, Battle M, McConnell J R, Mitchell L, Popp T, Sofen E and Spencer M K 2009 Carbon and hydrogen isotopic composition of methane over the last 1000 years *Glob. Biogeochem. Cycles* **23** GB4024

- Monteil G, Houweling S, Dlugokenky E J, Maenhout G, Vaughn B H, White J W C and Rockmann T 2011 Interpreting methane variations in the past two decades using measurements of CH<sub>4</sub> mixing ratio and isotopic composition *Atmos. Chem. Phys.* **11** 9141–53
- Müller J, Paudel R, Shoemaker C A, Woodbury J, Wang Y and Mahowald N 2015 CH<sub>4</sub> parameter estimation in CLM4. 5bgc using surrogate global optimization *Geosci. Model Dev. Discuss.* **8** 141–207
- Neubauer S C and Megonigal J P 2015 Moving beyond global warming potentials to quantify the climatic role of ecosystems *Ecosystems* **18** 1000–13
- OECD 1996 *Guidelines for Aid Agencies for Improved Conservation and Sustainable use of Tropical and Subtropical Wetlands* Organisation for Economic Co-operation and Development, Paris, France
- Oleson K *et al* 2013 Technical description of version 4.5 of the Community Land Model (CLM) *NCAR Technical Note* p 420
- Prigent C, Papa F, Aires F, Rossow W B and Matthews E 2007 Global inundation dynamics inferred from multiple satellite observations 1993–2000 *J. Geophys. Res. Atmos.* **112** D12107
- Randerson J T *et al* 2009 Systematic assessment of terrestrial biogeochemistry in coupled climate–carbon models *Glob. Change Biol.* **15** 2462–84
- Reich P B *et al* 2001 Plant diversity enhances ecosystem responses to elevated CO<sub>2</sub> and nitrogen deposition *Nature* **410** 809–10
- Riley W J, Subin Z M, Lawrence D M, Swenson S C, Torn M S, Meng L, Mahowald N M and Hess P 2011 Barriers to predicting changes in global terrestrial methane fluxes: analyses using CLM4Me, a methane biogeochemistry model integrated in CESM *Biogeosciences Discuss.* **8** 1733–807
- Ringeval B *et al* 2013 Response of methane emissions from wetlands to the Last Glacial Maximum and an idealized Dansgaard-Oeschger climate event: insights from two models of different complexity *Clim. Past* **9** 149–71
- Ringeval B, de Noblet-Ducoudré N, Ciais P, Bousquet P, Prigent C, Papa F and Rossow W B 2010 An attempt to quantify the impact of changes in wetland extent on methane emissions on the seasonal and interannual time scales *Glob. Biogeochem. Cycles* **24** GB2003
- Ringeval B, Friedlingstein P, Koven C, Ciais P, de N-D N, Decharme B and Cadule P 2011 Climate-CH<sub>4</sub> feedback from wetlands and its interaction with the climate-CO<sub>2</sub> feedback *Biogeosciences* **8** 2137–57
- Shindell D T, Walter B P and Faluvegi G 2004 Impacts of climate change on methane emissions from wetlands *Geophys. Res. Lett.* **31** L21202
- Spahni R *et al* 2011 Constraining global methane emissions and uptake by ecosystems *Biogeosciences* **8** 1643–65
- Thornton P E, Doney S C, Lindsay K, Moore J K, Mahowald N, Randerson J T, Fung I, Lamarque J-F, Feddesma J J and Lee Y-H 2009 Carbon–nitrogen interactions regulate climate–carbon cycle feedbacks: results from an atmosphere–ocean general circulation model *Biogeosciences* **6** 2099–120
- Unger N, Bond T C, Wang J S, Koch D M, Menon S, Shindell D T and Bauer S 2010 Attribution of climate forcing to economic sectors *Proc. Natl. Acad. Sci. USA* **107** 3382–7
- Van Groenigen K J, Osenberg C W and Hungate B A 2011 Increased soil emissions of potent greenhouse gases under increased atmospheric CO<sub>2</sub> *Nature* **475** 214–6
- Volodin E M 2008 Methane cycle in the INM RAS climate model *Izv. Atmos. Ocean. Phys.* **44** 153–9
- Walter B P, Heimann M and Matthews E 2001 Modeling modern methane emissions from natural wetlands: 1. model description and results *J. Geophys. Res. Atmos.* **106** 34189–206
- Wania R, Ross I and Prentice I C 2010 Implementation and evaluation of a new methane model within a dynamic global vegetation model: LPJ-WHyMe v1.3.1 *Geosci. Model Dev.* **3** 565–84
- Watts J D, Kimball J S, Bartsch A and McDonald K C 2014 Surface water inundation in the boreal-Arctic: potential impacts on regional methane emissions *Environ. Res. Lett.* **9** 75001
- Whiting G J and Chanton J P 1993 Primary production control of methane emission from wetlands *Nature* **364** 794–5
- Zedler J B and Kercher S 2005 Wetland resources: status, trends, ecosystem services, and restorability *Annu. Rev. Environ. Resour.* **30** 39–74
- Zhu *et al* 2014 Modelling methane emissions from natural wetlands by development and application of the TRIPLEX-GHG model *Geosci. Model Dev.* **7** 981–99
- Zhu X, Zhuang Q, Gao X, Sokolov A and Schlosser C A 2013 Pan-Arctic land–atmospheric fluxes of methane and carbon dioxide in response to climate change over the 21st century *Environ. Res. Lett.* **8** 045003