

Corrigendum: International trade, and land use intensification and spatial reorganization explain Costa Rica's forest transition (2016 *Environ. Res. Lett.* 11 035005)

This content has been downloaded from IOPscience. Please scroll down to see the full text.

2016 *Environ. Res. Lett.* 11 049502

(<http://iopscience.iop.org/1748-9326/11/4/049502>)

View [the table of contents for this issue](#), or go to the [journal homepage](#) for more

Download details:

IP Address: 210.77.64.109

This content was downloaded on 07/04/2017 at 04:37

Please note that [terms and conditions apply](#).

You may also be interested in:

[International trade, and land use intensification and spatial reorganization explain Costa Rica's forest transition](#)

I Jadin, P Meyfroidt and E F Lambin

Environmental Research Letters



CORRIGENDUM

Corrigendum: International trade, and land use intensification and spatial reorganization explain Costa Rica's forest transition (2016 *Environ. Res. Lett.* 11 035005)

OPEN ACCESS

PUBLISHED
19 April 2016

Original content from this work may be used under the terms of the [Creative Commons Attribution 3.0 licence](#).

Any further distribution of this work must maintain attribution to the author(s) and the title of the work, journal citation and DOI.



I Jadin^{1,2}, P Meyfroidt^{1,2} and E F Lambin^{1,3}

¹ Georges Lemaitre Earth and Climate Research Centre, Earth and Life Institute, Université catholique de Louvain, Place Louis Pasteur 3, bte L4.03.08, 1348 Louvain-la-Neuve, Belgium

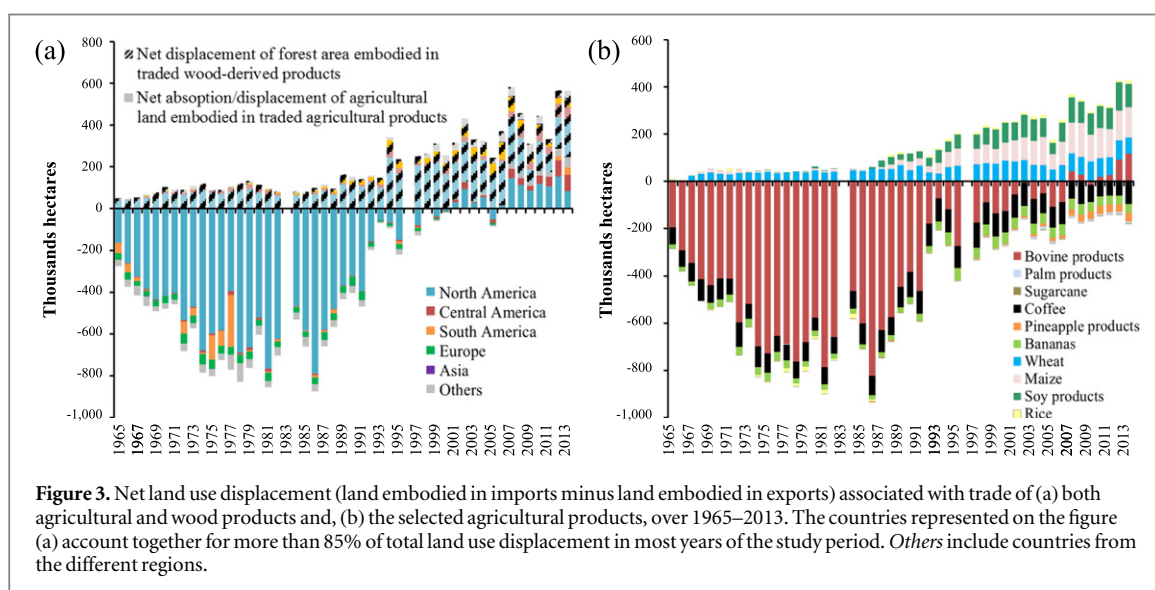
² F.R.S.—FNRS, Belgium

³ School of Earth, Energy & Environmental Sciences and Woods Institute for the Environment, Stanford University, 473 Via Ortega, Stanford, CA 94305, USA

E-mail: isaline.jadin@uclouvain.be

In figure 3(a), the part of the legend explaining the difference between solid and hatched bars was missing. In figure 5, the second time interval should be 1987–2000 (not 1986–2000). The two figures with their complete and correct legend are shown below.

In table 1, the formatting of numbers was changed to facilitate reading. The layout was also modified to highlight that total land demand/released is the sum of the three terms of accumulated land demand (RF, CS, EP), and the sum of the three terms of accumulated land released (IP, IT, RD). The modified table is shown below.



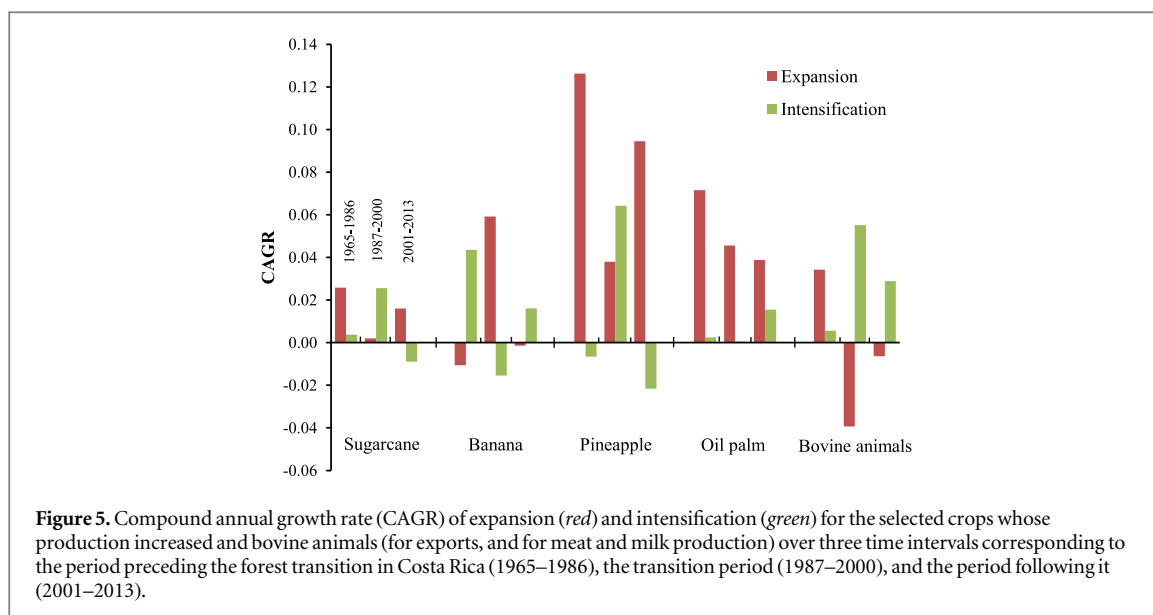


Table 1. Estimates of the terms of equation (1).

	Accumulated land demand for			Total land demand/released	Accumulated land released through		
	RF	CS	EP		IP	IT	RD
Accumulated area (ha.yr)	14 427 636	21 471 024	9 266 965	45 165 625	10 977 361	34 188 264	
% of total land demand/released	31.94	47.54	20.52	100	24.30	75.70	

RF: net reforestation.

CS: growing consumption of agricultural products.

EP: growing exports of agricultural products.

IP: growing imports of agricultural products.

IT: intensification of agriculture.

RD: redistribution of agricultural land.