

Hotspots of land use change in Europe

This content has been downloaded from IOPscience. Please scroll down to see the full text.

2016 Environ. Res. Lett. 11 064020

(<http://iopscience.iop.org/1748-9326/11/6/064020>)

View [the table of contents for this issue](#), or go to the [journal homepage](#) for more

Download details:

IP Address: 210.77.64.106

This content was downloaded on 10/04/2017 at 04:22

Please note that [terms and conditions apply](#).

You may also be interested in:

[Mapping cropland-use intensity across Europe using MODIS NDVI time series](#)

Stephan Estel, Tobias Kuemmerle, Christian Levers et al.

[Investigating potential transferability of place-based research in land system science](#)

Tomáš Václavík, Fanny Langerwisch, Marc Cotter et al.

[Long-term agricultural land-cover change and potential for cropland expansion in the former Virgin Lands area of Kazakhstan](#)

Roland Kraemer, Alexander V Prishchepov, Daniel Müller et al.

[Mapping the extent of abandoned farmland in Central and Eastern Europe using MODIS time series satellite data](#)

Camilo Alcantara, Tobias Kuemmerle, Matthias Baumann et al.

[Afforestation to mitigate climate change: impacts on food prices under consideration of albedo effects](#)

Ulrich Kreidenweis, Florian Humpenöder, Miodrag Stevanovi et al.

[Differences in production, carbon stocks and biodiversity outcomes of land tenure regimes in the Argentine Dry Chaco](#)

Sofía Marinaro, H Ricardo Grau, Néstor Ignacio Gasparri et al.

[Agricultural land change in the Carpathian ecoregion after the breakdown of socialism and expansion of the European Union](#)

Patrick Griffiths, Daniel Müller, Tobias Kuemmerle et al.

[Mapping and analysing cropland use intensity from a NPP perspective](#)

Maria Niedertscheider, Thomas Kastner, Tamara Fetzel et al.

Environmental Research Letters



LETTER

Hotspots of land use change in Europe

OPEN ACCESS

RECEIVED
8 March 2016

ACCEPTED FOR PUBLICATION
19 May 2016

PUBLISHED
23 June 2016

Original content from this work may be used under the terms of the [Creative Commons Attribution 3.0 licence](#).

Any further distribution of this work must maintain attribution to the author(s) and the title of the work, journal citation and DOI.



Tobias Kuemmerle^{1,2,9}, Christian Levers¹, Karlheinz Erb³, Stephan Estel^{1,4}, Martin R Jepsen⁵, Daniel Müller^{1,2,6}, Christoph Plutzer³, Julia Stürck⁷, Pieter J Verkerk⁸, Peter H Verburg⁷ and Anette Reenberg⁵

¹ Geography Department, Humboldt-University Berlin, Unter den Linden 6, D-10099 Berlin, Germany

² Integrative Research Institute on Transformation in Human-Environment Systems (IRI THESys), Humboldt-University Berlin, Unter den Linden 6, D-10099 Berlin, Germany

³ Institute of Social Ecology Vienna (SEC), Alpen-Adria Universität Klagenfurt, Wien, Graz A-1070 Vienna, Austria

⁴ Department of Earth and Environment, Boston University, 685 Commonwealth Avenue, Boston MA 02215, USA

⁵ Department of Geosciences and Natural Resource Management, University of Copenhagen, Øster Voldgade 10, DK-1350 Copenhagen, Denmark

⁶ Leibniz Institute of Agricultural Development in Transition Economies (IAMO), Theodor-Lieser-Str. 2, D-06120 Halle (Saale), Germany

⁷ Environmental Geography Group, Department of Earth Science, VU University Amsterdam, De Boelelaan 1087, 1081 HV Amsterdam, The Netherlands

⁸ European Forest Institute (EFI), Sustainability and Climate Change Programme, Yliopistokatu 6, FI-80100 Joensuu, Finland

⁹ Author to whom any correspondence should be addressed.

E-mail: tobias.kuemmerle@hu-berlin.de

Keywords: land use change, land systems, Europe, intensification, abandonment, spatial differentiation

Supplementary material for this article is available [online](#)

Abstract

Assessing changes in the extent and management intensity of land use is crucial to understanding land-system dynamics and their environmental and social outcomes. Yet, changes in the spatial patterns of land management intensity, and thus how they might relate to changes in the extent of land uses, remains unclear for many world regions. We compiled and analyzed high-resolution, spatially-explicit land-use change indicators capturing changes in both the extent and management intensity of cropland, grazing land, forests, and urban areas for all of Europe for the period 1990–2006. Based on these indicators, we identified hotspots of change and explored the spatial concordance of area versus intensity changes. We found a clear East–West divide with regard to agriculture, with stronger cropland declines and lower management intensity in the East compared to the West. Yet, these patterns were not uniform and diverging patterns of intensification in areas highly suitable for farming, and disintensification and cropland contraction in more marginal areas emerged. Despite the moderate overall rates of change, many regions in Europe fell into at least one land-use change hotspot during 1990–2006, often related to a spatial reorganization of land use (i.e., co-occurring area decline and intensification or co-occurring area increase and disintensification). Our analyses highlighted the diverse spatial patterns and heterogeneity of land-use changes in Europe, and the importance of jointly considering changes in the extent and management intensity of land use, as well as feedbacks among land-use sectors. Given this spatial differentiation of land-use change, and thus its environmental impacts, spatially-explicit assessments of land-use dynamics are important for context-specific, regionalized land-use policy making.

1. Introduction

Humankind depends on land use for food, feed, fibre, and bioenergy, yet the environmental trade-offs of land use, such as greenhouse gas emissions, water use and pollution, biodiversity loss or soil erosion, are

substantial—from local to global scales (Foley *et al* 2005, MA 2005, Tilman *et al* 2011). As these trade-offs depend on site conditions and vary substantially in space, understanding where, how, and why land use is changing is thus important for mitigating them, and for developing policies to transition to more

sustainable forms of land management (Turner *et al* 2007, Rounsevell *et al* 2012). In this context, land system science has so far predominantly focused on conversions among broad land-use classes, such as deforestation (e.g., Geist and Lambin 2002, Hansen *et al* 2013, Graesser *et al* 2015), urbanization (e.g., Deng *et al* 2008, Taubenböck *et al* 2012), or forest expansion (e.g., Rudel *et al* 2005, Meyfroidt and Lambin 2011, Kuemmerle *et al* 2015). Changes in land-management intensity (e.g., agricultural and forest management intensification) have received much less attention (Erb *et al* 2013a), although intensity changes have long been widespread (Ellis *et al* 2013), are the dominating land-use change processes in some regions (Rudel *et al* 2009, Rounsevell *et al* 2012, McGrath *et al* 2015), and will likely increase in importance as pressures on land rises (Foley *et al* 2011, Lambin and Meyfroidt 2011, Fares *et al* 2015). Yet, assessing the spatial patterns of intensity change hinges on adequate spatial data on management intensity for large areas (Verburg *et al* 2011, Kuemmerle *et al* 2013).

Important links between changes in the extent of broad land-use classes on the one hand, changes in the management intensity within these classes are also increasingly emerging, with multiple co-occurring as well as spatially heterogeneous land-use changes frequently found. For example, agricultural intensification may co-occur with the concentration of agriculture on fertile soils and the abandonment of more marginal land (Stoate *et al* 2009, Piquer-Rodríguez *et al* 2012, Niedertscheider *et al* 2014) or, conversely, in the expansion of land use through rebound effects (Lambin and Meyfroidt 2011, Gasparri and le Polain de Waroux 2014). Similarly, urbanization is a powerful driver of land-system change, leading to agricultural intensification close to cities, while possibly reducing land-use pressure in the source areas of migrants (Aide and Grau 2004, Seto *et al* 2012). As globalization connects land systems across large distances, spatially disparate linkages between area and intensity changes may also occur. An example for this is the increasing spatial disconnection between production and consumption that may allow land in one region to be set aside while the land-use footprint embodied in traded goods increases elsewhere (Mayer *et al* 2005, Lambin and Meyfroidt 2011, Lenzen *et al* 2012, Kastner *et al* 2014). These examples highlight the importance of jointly analyzing changes in the extent and intensity of land use, but our understanding of how spatial patterns in these land-use change processes relate to each other, or how changes in one sector (e.g., agriculture) relate to changes in another (e.g., forestry, urban areas) remains weak.

During the second half of the 20th century, European land use has predominantly changed along intensification gradients (Rounsevell *et al* 2012). Agricultural systems were intensified substantially, especially during the 1960s–1980s, and Europe today has

some of the most intensively managed croplands in the world (Haberl *et al* 2007, Mueller *et al* 2012). On the other hand, farmland area has declined in areas less suitable for agriculture, partly due to a declining profitability of farming as well as rural emigration (MacDonald *et al* 2000, Navarro and Pereira 2012). This triggered the widespread loss of traditional agricultural landscapes (Fischer *et al* 2012) and, together with active afforestation efforts, has increased the forest area by about 25% since the 1950s (Gold *et al* 2006, Fuchs *et al* 2013). In the same period, the growing stock in Europe's forests doubled (Gold *et al* 2006, Vilén *et al* 2015), due to nitrogen deposition, and climate change and changes in forest management practices (Ciais *et al* 2008, Erb *et al* 2013b, Pretzsch *et al* 2014). Finally, Europe expanded its conservation network substantially (Jones-Walters and Čivić 2013), and concerns about the environmental costs of intensification have resulted in a growing emphasis on multifunctionality, for example through agri-environmental and set-aside schemes (Tschardt *et al* 2011, Whittingham 2011).

Where these different land-use change processes occur and how their spatial patterns relate to each other, however, has not been systematically explored. Only a few studies have observed conversions among broad land-use classes at the pan-European scale, either relying on small case study regions (Gerard *et al* 2010) or solely on the coordinated information on the European environment (CORINE) land-cover product (Büttner *et al* 2004, Feranec *et al* 2007, Hatna and Bakker 2011, Fuchs *et al* 2013). While CORINE captures some changes relatively well (e.g., urbanization), estimates for some key land-use change processes, for example agricultural abandonment or deforestation (which cannot be distinguished from forest clear-cutting in CORINE) are uncertain. Finally, rates and patterns of changes in the management intensity of agriculture and forestry are not captured by CORINE (Stoate *et al* 2009). New spatially-explicit, land-use datasets have recently become available for Europe (Neumann *et al* 2009, Temme and Verburg 2011, Levers *et al* 2014, Overmars *et al* 2014, Verkerk *et al* 2015, Plutzer *et al* 2016), providing new opportunities to better understand the relationship among different land-use change processes.

Our overarching goal was to map the spatial patterns of changes in the extent and management intensity in Europe's agriculture, forestry, and urban areas in order to identify land-use change hotspots and to assess the spatial congruence between land-use change processes. Our goal here was not to ascribe agency or to quantify the underlying causes of the land-use changes we identified. Specifically, we here asked the following research questions:

- (1) What were the spatial patterns of changes in the extent and intensity of agriculture, forest

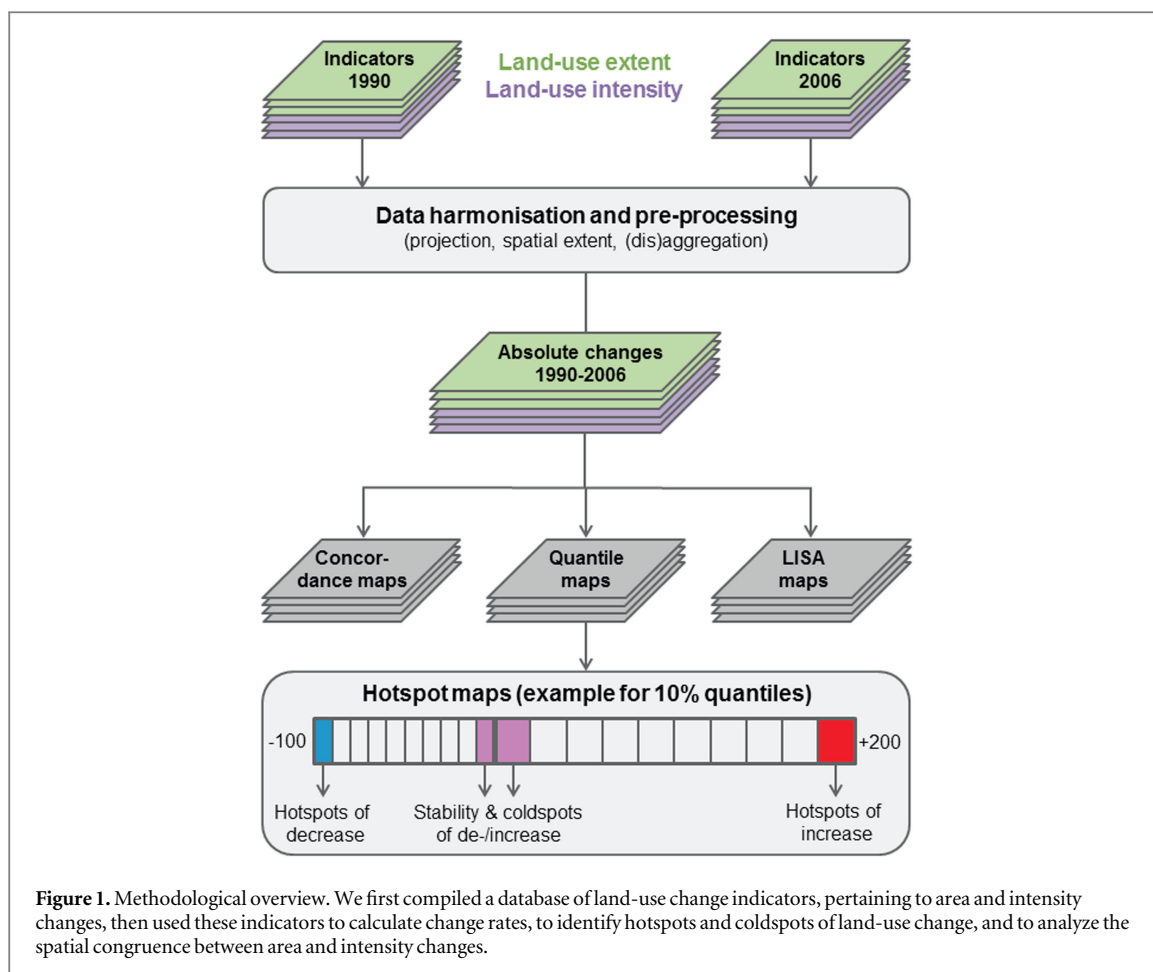


Table 1. Indicators of land-use change used in the analyses to characterize land-system change between 1990 and 2006 (2012).

	Area change	Intensity change
Cropland	Cropland area change (arable cropland and permanent cropland) Fallow and abandoned land (agricultural abandonment, and agricultural recultivation)	Changes in input intensity (fertilizer) Changes in output intensity (yield changes for major crops)
Grazing land	Pasture/meadow area change	Changes in input intensity (livestock units) Changes in output intensity (biomass removal from grazing land)
Forestry	Forestland area change	Changes in output intensity (harvesting volume)
Urban areas	Urban extent change	—

management and urban areas in the European Union between 1990 and 2006?

- (2) Where were hotspots and coldspots of these land-use changes in Europe?
- (3) How did the spatial patterns of these land-use changes relate to each other?

2. Methods and materials

2.1. Overview

Our methodological approach consisted of three steps (figure 1). First, we compiled a consistent database of high-resolution land-use change indicators for the EU-28, excluding Cyprus, Malta, and Croatia (figure

S1). We gathered data on changes in the extent of cropland, grazing land, and forestry, as well as information on changes in the extent of urban areas (table 1). To measure management intensity, we used two types of complementary metrics, following Kuemmerle *et al* (2013): (1) input metrics, which measure inputs to production, usually per area (in our case: fertilizer application for cropland and livestock units for grazing land), and (2) output metrics, which relate outputs to inputs (in our case: yields for major crops for cropland, plant biomass removed for grazing land, and harvested roundwood volumes, table 1). We gathered these datasets for the years 1990 and 2006, the most recent year for which the majority of our datasets were available. A critical issue when jointly analyzing area and intensity changes is consistency

between datasets. To ensure consistency, we relied wherever possible on land-use statistics from the common agricultural policy regionalized impact (CAPRI, Britz and Witzke 2012) and the Forest Europe (2011) database. Moreover, we aggregated or disaggregated all indicators to a common spatial resolution of $3 \times 3 \text{ km}^2$ (see section 2.1 and supporting information for details).

Second, we calculated absolute land-use changes for each indicator. We then identified hotspots as the top 10th percentile of positive change (i.e. hotspots of increase) and the bottom 10th percentile of negative change (i.e., hotspots of decrease). As coldspots, we labelled all stable areas and areas with low change (lowest 10th percentiles of positive and negative change rates). We assessed the robustness of our results by carrying out a sensitivity analysis with alternative thresholds (see section 2.3 and supporting information). Third, we overlaid our indicators of area change and intensity change per land-use sector using concordance maps and used local indicators of spatial association (LISA) to identify statistically significant associations between area and intensity changes (see section 2.3).

2.2. Datasets used

In the following, we provide a summary of the datasets used in this study. Further detail on data sources and the preprocessing carried out is provided in the Supporting Information as well as in other publications describing individual datasets in detail.

2.2.1. Data on area changes

We used cropland and pasture area from the CAPRI database for the years 1990 and 2006 (i.e., corresponding with the CORINE time periods) at the NUTS-2 (Nomenclature des Unités Territoriales Statistiques) level. We allocated cropland area (i.e., arable land and permanent crops) as well as meadows and pastures to the $3 \times 3 \text{ km}^2$ gridcells using the CORINE cropland and the CAPRI-DynaSpat layers (Leip *et al* 2008, Heckelei and Kempen 2011) as weights (see supporting information). We also allocated meadows and pastures to the CORINE classes 'heterogeneous agricultural area', as well as to 'shrublands and 'grasslands' in the NUTS-2 regions where not all pasture area could be allocated otherwise.

Assessing changes in forestland from satellite-based land-cover maps such as CORINE is challenging, because forest cover changes can reflect permanent gains or losses in forestland, but also natural disturbance (e.g., storms or fire) or management (e.g., harvest), which do not reflect land-use change. To derive forestland maps, we therefore disaggregated harmonized, regional-level forestland statistics for the years 1990 and 2005 (Levers *et al* 2014) to the 3 km target grid using CORINE forest cover as weights (Plutzer *et al* 2016). To calculate the extent of urban area

change, we relied on the 1990 and 2006 CORINE maps and calculated percent urban area within $3 \times 3 \text{ km}^2$ cells based on the 11 urban or built-up classes. Notably, an important asset of our dataset is thus that it is internally consistent at the level of gridcells (i.e., fractions of land-use classes described above summing up to 100%) as well as at the level of NUTS-2 regions (Plutzer *et al* 2016).

Agricultural abandonment is poorly captured by CORINE (Verburg *et al* 2009) and, to complement the land-use dataset above, we therefore mapped indicators of agricultural abandonment and recultivation from the moderate resolution imaging spectroradiometer (MODIS) normalized differenced vegetation index (232 m) time series from 2000 to 2012 (Estel *et al* 2015). For each year, we classified each MODIS pixel that fell within the CORINE cropland and pastures classes as either managed (i.e., plowed, mowed or grazed) or fallow. Using the resulting managed/fallow time series, we then defined agricultural abandonment (managed before 2006 but not thereafter) and recultivation (unmanaged before 2006, but managed thereafter) and summarized these classes at the 3 km target grid (see supporting information for further detail).

2.2.2. Data on intensity changes

In terms of cropland inputs, we used maps of homogenized fertilizer use data from the CAPRI database, which were originally classified into three fertilizer input classes (low: $<50 \text{ kg ha}^{-1}$, medium: $50\text{--}150 \text{ kg ha}^{-1}$, and high: $>150 \text{ kg ha}^{-1}$), and then downscaled to a 1 km grid level (Temme and Verburg 2011, Overmars *et al* 2014). For the purpose of this study, these data were then aggregated to our 3 km target grid. In terms of cropland outputs, we used yields for the 13 most important crops from the CAPRI database for 1990 and 2006 and disaggregated these yields to the 3 km target grid using crop-specific suitability maps derived using a niche modelling approach.

Regarding grazing systems, we used grazing intensity maps (measured as livestock units (LSU) per pasture area) that were originally derived by calculating equivalent LSU from NUTS-2 level livestock numbers for the years 1990 and 2006, and then downscaling these data to a 1 km grid into four grazing intensity categories (1: $<25 \text{ LSU/km}^2$; 2: $25\text{--}50 \text{ LSU/km}^2$; 3: $50\text{--}100 \text{ LSU/km}^2$; and 4: $>100 \text{ LSU/km}^2$) (Neumann *et al* 2009). We aggregated these data to our 3 km target grid. Regarding output metrics, we used biomass yields (i.e., plant biomass removed from pastures) from CAPRI, disaggregated to our 3 km target grid, using a combination of actual net primary production and slope as weights (see supporting information for further detail).

To assess forest management intensity, we compiled harmonized roundwood production maps based on regional harvest statistics from 1990 and 2006 at the level of administrative units ranging from the national

to provincial or forestry district level (NUTS-0 to NUTS-3, depending on country; see Levers *et al* 2014). Using harvest likelihood and forest cover as weights (Verkerk *et al* 2015), we disaggregated roundwood production to the 3 km target grid (see supporting information for further detail).

2.3. Analyzing spatial patterns of land-use change in Europe

The resulting database of area and intensity changes allowed us to calculate absolute change values on a per grid cell basis by subtracting the values in 2006 from 1990. Calculating change in the original data range (i.e., change expressed in absolute values rather than as percent change relative to 1990) avoids labeling areas as hotspots that are characterized by small overall area or intensity changes, but which may still exhibited high relative change.

To map hotspots, we derived quantile maps for each indicator (table 1) by assigning all values into bins comprising 10% of the total population. This was done separately for positive values and negative values (figure 1). We labelled the bins with the highest amount of positive and negative change per indicator as hotspots of increase and decrease, respectively. Bins with the lowest amount of positive and negative change or without any change were categorized as coldspots (i.e., areas of stability). To assess the sensitivity of our results to the selection of the 10%-threshold (i.e., the highest and lowest decile), we tested alternative hotspot classifications using thresholds of 2.5%, 5%, 7.5%, 15%, and 20% (see supporting information).

To summarize the hotspot maps across indicators, we counted how often a gridcell was included in a hotspot or coldspot, separately for the cropland, pasture, and forest management indicators and for area change and management intensity change. To highlight spatial patterns of area changes relative to intensity changes, we derived two-dimensional concordance maps for our cropland, pasture and forest management indicators. Finally, we quantified the spatial associations between area and intensity change using local indicators of spatial association (LISA, Anselin 1995). We used the bivariate Moran's I , which measures the strength of the spatial association between two variables by relating the value of a variable at one location to a different variable at neighboring locations. Using the area and intensity indicators for 1990 and 2006, we applied bivariate Moran's I to identify clusters of significant associations ($p < 0.05$, 999 permutations) of (1) increasing area and increasing intensity, (2) increasing area but declining intensity, (3) decreasing area and increasing intensity, and (4) declining area and declining intensity (see supporting information for further detail).

3. Results

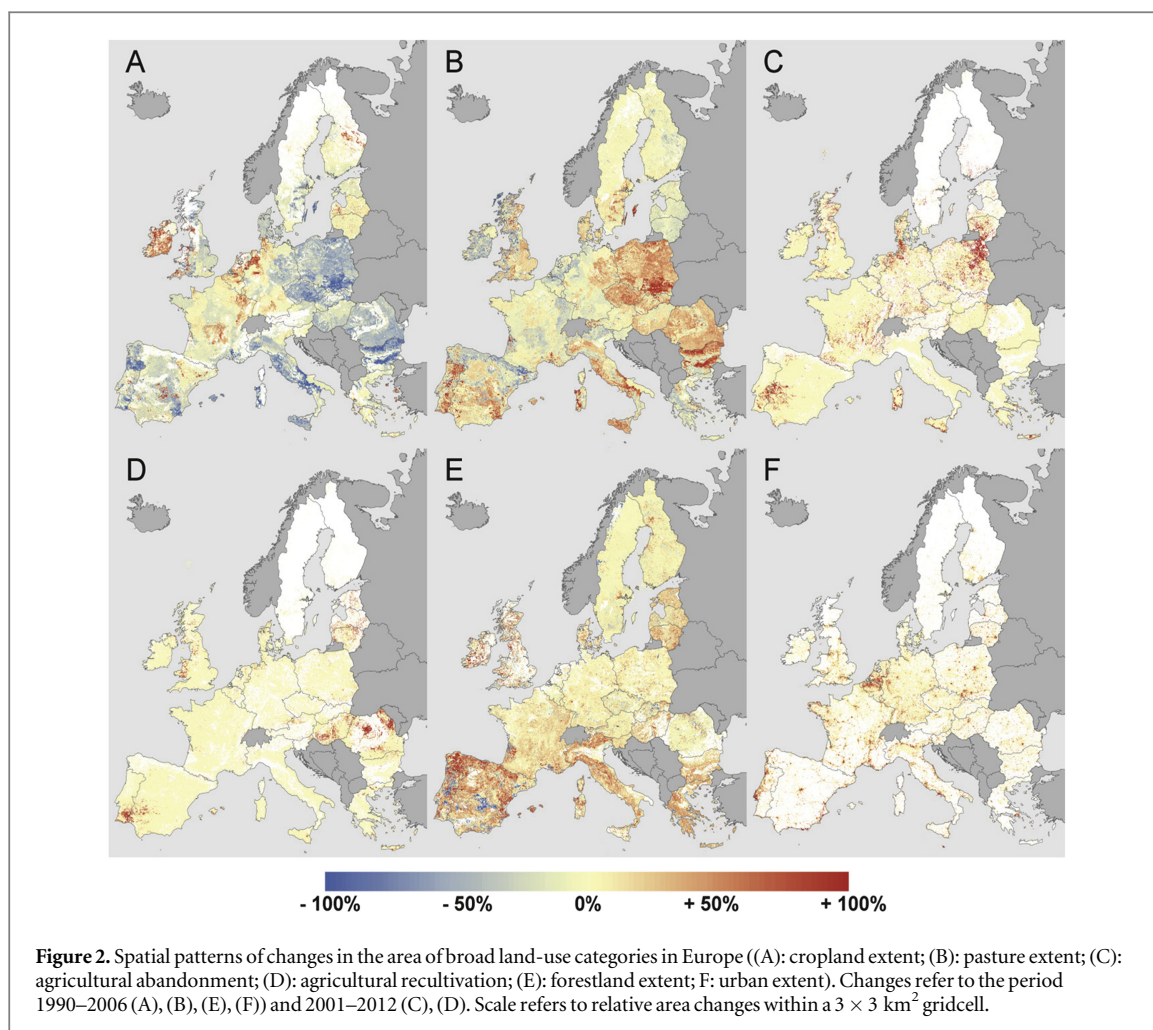
3.1. Changes in the extent of broad land-use categories

The most widespread changes in the extent of land-use categories in the EU between 1990 and 2006 were cropland decline ($\sim 136.660 \text{ km}^2$), followed by expansion of grazing land ($\sim 75.670 \text{ km}^2$), and expansion of forest areas ($\sim 70.630 \text{ km}^2$). The least common conversion among broad land-use categories was urban expansion ($\sim 16.820 \text{ km}^2$). Agricultural abandonment (i.e., of cropland and grazing land) amounted to 20.500 km^2 between 2000 and 2012, whereas recultivation after 2006 affected 16.430 km^2 . At the European scale, these area changes translate into moderate land-conversion rates in the agricultural sector between 1990 and 2006, ranging from -13.4% for permanent crops to $+6.5\%$ for meadows and pastures, while urban areas expanded by approximately 21%.

Changes in the extent of broad land-use categories after 1990 showed distinct spatial patterns across Europe (figure 2). While cropland declined slightly throughout much of the EU, hotspots of decline occurred mainly in Eastern Europe (e.g., north- and southeastern Poland, southeastern Czech Republic, southern Romania, northern and central Bulgaria) and the Mediterranean (e.g., central and southern Italy, southern Spain, northern Portugal, figure 3(A)). Cropland expansion was rare overall, and occurred mainly in the Netherlands, northern Germany, some areas in central France, and Ireland (figure 2(A)), without major hotspots in Eastern Europe (figure 3(A)). Large areas of Europe were characterized by stable cropland patterns, particularly in southern Finland and southern Sweden, central and southern Germany, northern France, and central and western Spain (figure 3(A)).

Pastures were generally stable (figure 2(B)). A few hotspots of pasture expansion between 1990 and 2006 were located in Eastern Europe (e.g., southeastern and northeastern Poland, Bulgaria), central Italy and Sicily, southern Spain and much of Portugal, whereas pastures contracted mainly in Ireland, Scotland, the Netherlands, the Pyrenees, and central and northern Spain (figure 3(B)). Agricultural abandonment and recultivation after 2006 (i.e., mapped from MODIS satellite images) was often found in areas where cropland-grassland conversions happened between 1990 and 2006 (figures 2(C) and D). Hotspots of abandonment after 2006 occurred predominantly in Eastern Europe (e.g., northeastern Poland, Lithuania) and Scandinavia (figure 3(C)), but some recultivation of formerly abandoned areas was also found there (e.g., in Romania and Hungary, figure 3(D)).

Most areas in Europe had stable or slightly increasing forestland (figure 2(E)), with hotspots in the Mediterranean (i.e., northern Spain, Italy, Greece), the Baltics, Denmark, United Kingdom and Ireland (figure 3(E)). Forestland loss was much less



widespread with some hotspots in southern Spain and Portugal (figure 3(E)). Urban extent increased mainly along coastal areas in the Mediterranean (in Spain, central Italy, and southern France) and around major cities (figure 2(F)), especially in England, the Netherlands and Belgium, around Madrid, Lisbon, Helsinki, and Stockholm (figure 3(F)). Urban shrinkage was not a notable land-use change at the European scale.

3.2. Intensity changes within broad land use categories

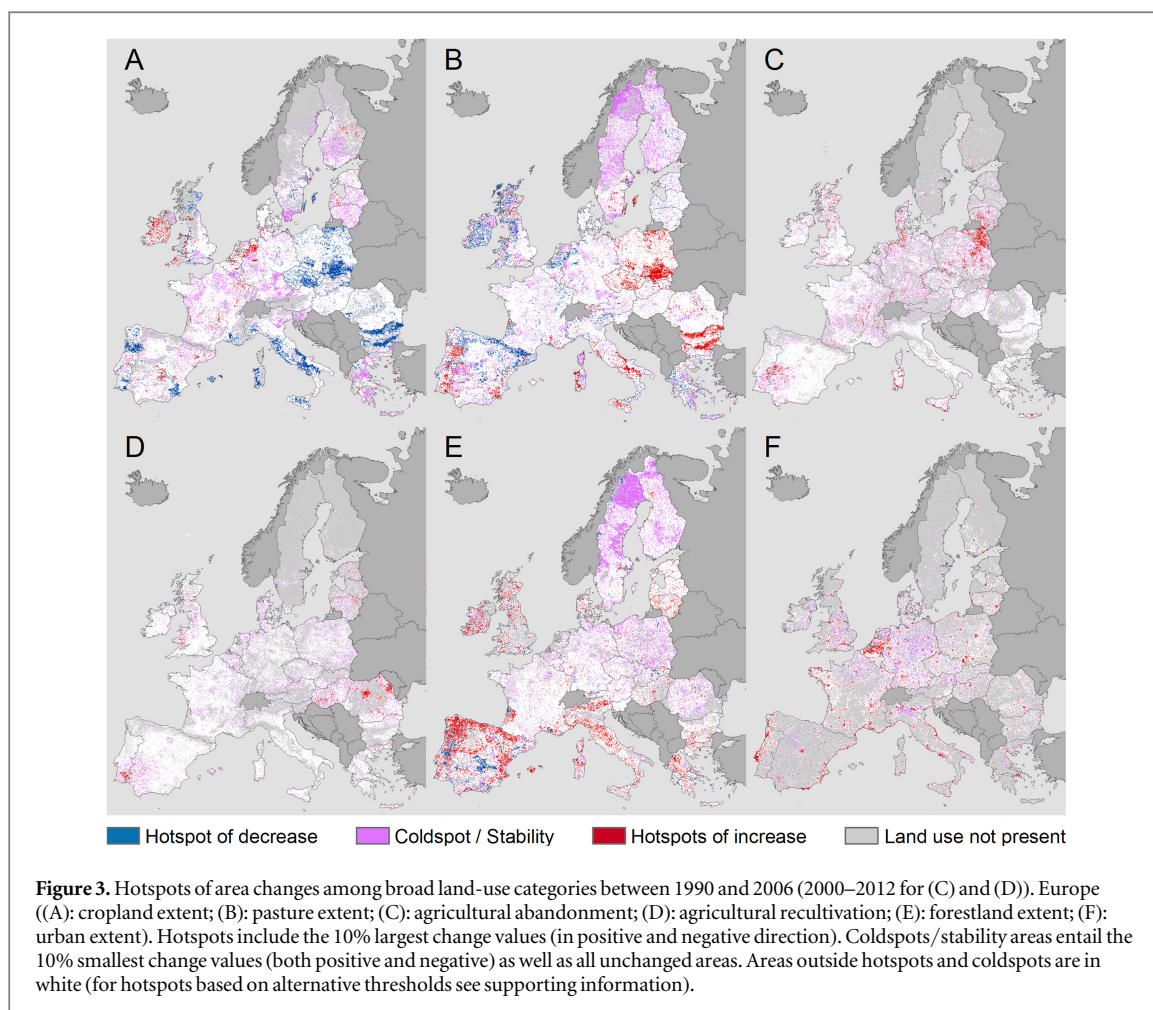
Changes in fertilizer use on Europe's cropland varied across Europe during 1990–2006 (figure 4(A)). Most hotspots of decline occurred in Southeastern Europe (e.g., Hungary, Romania, Bulgaria), with smaller hotspots of decline in western Germany, western France, and southern England (figure 5(A)). Fertilizer use increased in eastern Germany, Poland, and the Czech Republic, northern Italy, and central Spain. Many areas characterized by intensive agriculture remained in our most intensive category (e.g., most of Germany, France, Denmark, figure 4(A)). Patterns of changes in cropland yields showed a similar East–West pattern, consistent with changes in input-intensity (figure 4(B)). Stable or increasing yields were found throughout much of Western Europe, and yield

decreases in many Eastern regions (e.g., Poland, Czech Republic, and Bulgaria, figure 5(B)). Livestock density declined across most of Europe (figure 4(C)), most notably in the UK, northern Germany, the Baltics, and central France (figure 5(C)). Grazing land intensity, measured in biomass removal, also showed a clear East–West gradient (figure 4(D)), with strong declines in Eastern Europe (e.g., Poland, Romania, Bulgaria, and Hungary, figure 5(D)).

With regards to forest management intensity, roundwood production volumes remained relatively stable between 1990 and 2006 in Southern and Western Europe, but increased in central and northern Europe (figure 4(E)). Hotspot of increasing roundwood production were found particularly in mainly in southern Sweden, Latvia, in southern and western Germany, Austria, Czech Republic and Poland and hotspots of declines in roundwood production occurred mainly in Southwest and Northeast France, Luxembourg and Portugal (figure 5(E)).

3.3. Summarizing hotspots of area and intensity changes across indicators

Hotspot areas had surprisingly little overlap (figure 6). While the highest number of co-occurring hotspots was seven, only 1.8% of all areas within any hotspot



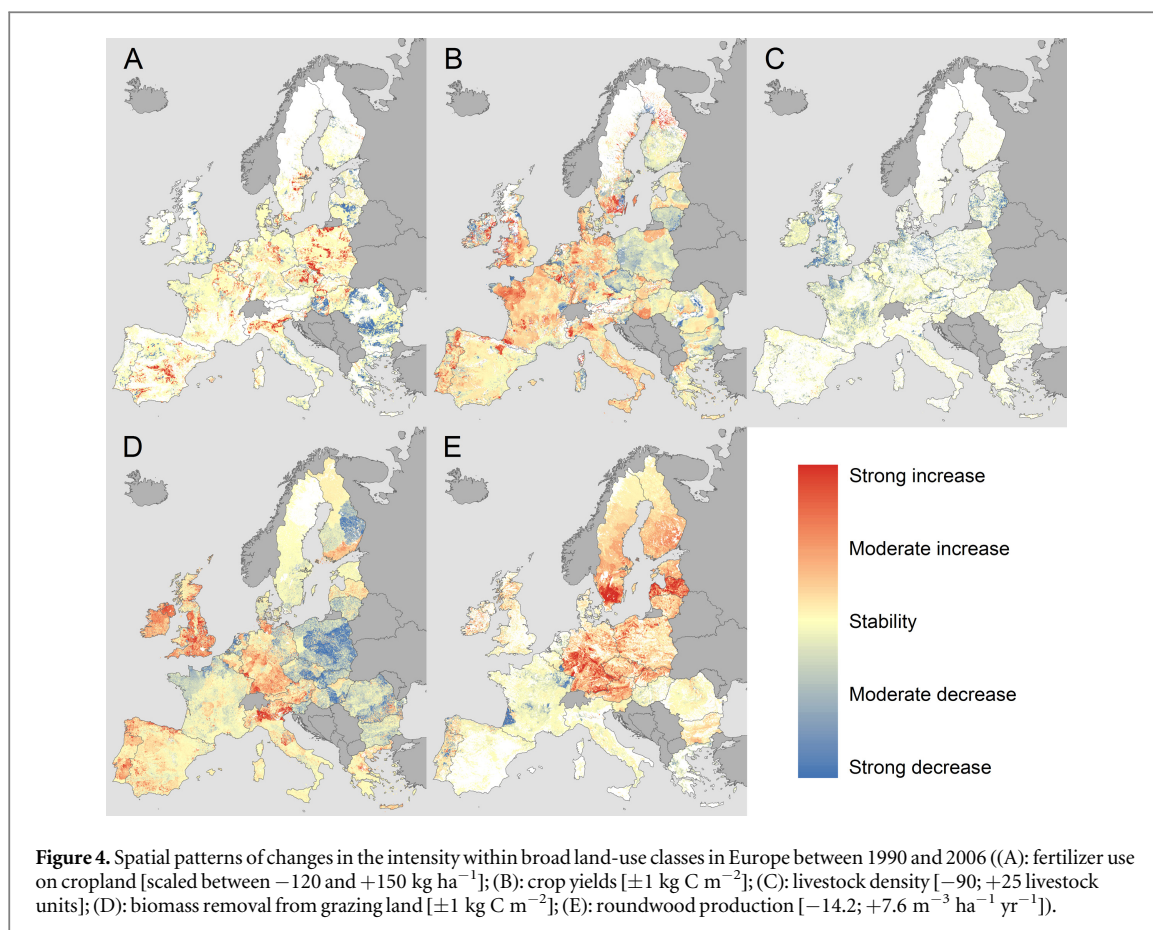
were included in four or more hotspots. Seventy percent of all hotspot areas were classified as only one type of hotspot, suggesting that, at the resolution of our analyses ($3 \times 3 \text{ km}^2$), most areas were characterized by single land-use changes rather than multiple co-occurring or diverging land-use changes.

Overlaying area and intensity changes (figure 7) confirmed the insights from the individual indicators; specifically the strong East–West divide and the relative stability of large areas in Europe (grey areas in figures 7(A)–(E)). However, the overlay also showed interesting patterns of co-occurrence of land-use change processes. Generally, few areas were characterized by significant associations of increases in area *and* intensity (black areas in figures 7(F)–(J)). Notable examples of this pattern include Western Europe regarding cropland (figure 7(G)), or Portugal and England regarding pastures (figure 7(I)). Co-occurrence of area decline and intensification (cyan areas in figures 7(F)–(J)) was more dominant, for example regarding cropland decline and fertilizer use in many Eastern European areas (figure 7(F)) or regarding pastures decline and biomass yield in Western and Central Europe (figure 7(I)). Area expansion co-occurring with disintensification (red colors in figures 7(F)–(J)) were scattered for cropland while much of Eastern

Europe had increasing pasture areas and declining biomass yields (figure 7(I)). In terms of forest management intensity, a clear pattern of stable intensity and increasing forest extent was visible in the Mediterranean and in Western Europe, whereas increased harvests on stable forest area in Central and Northern Europe were prevalent (figure 7(J)). Overall, Western Europe's agricultural area was characterized as stable or intensifying while Eastern Europe exhibited stable or declining agricultural extent and intensity.

4. Discussion

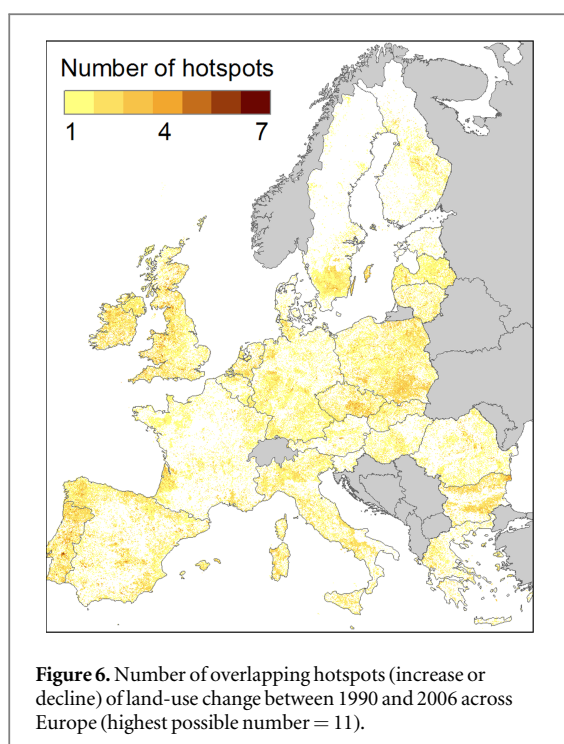
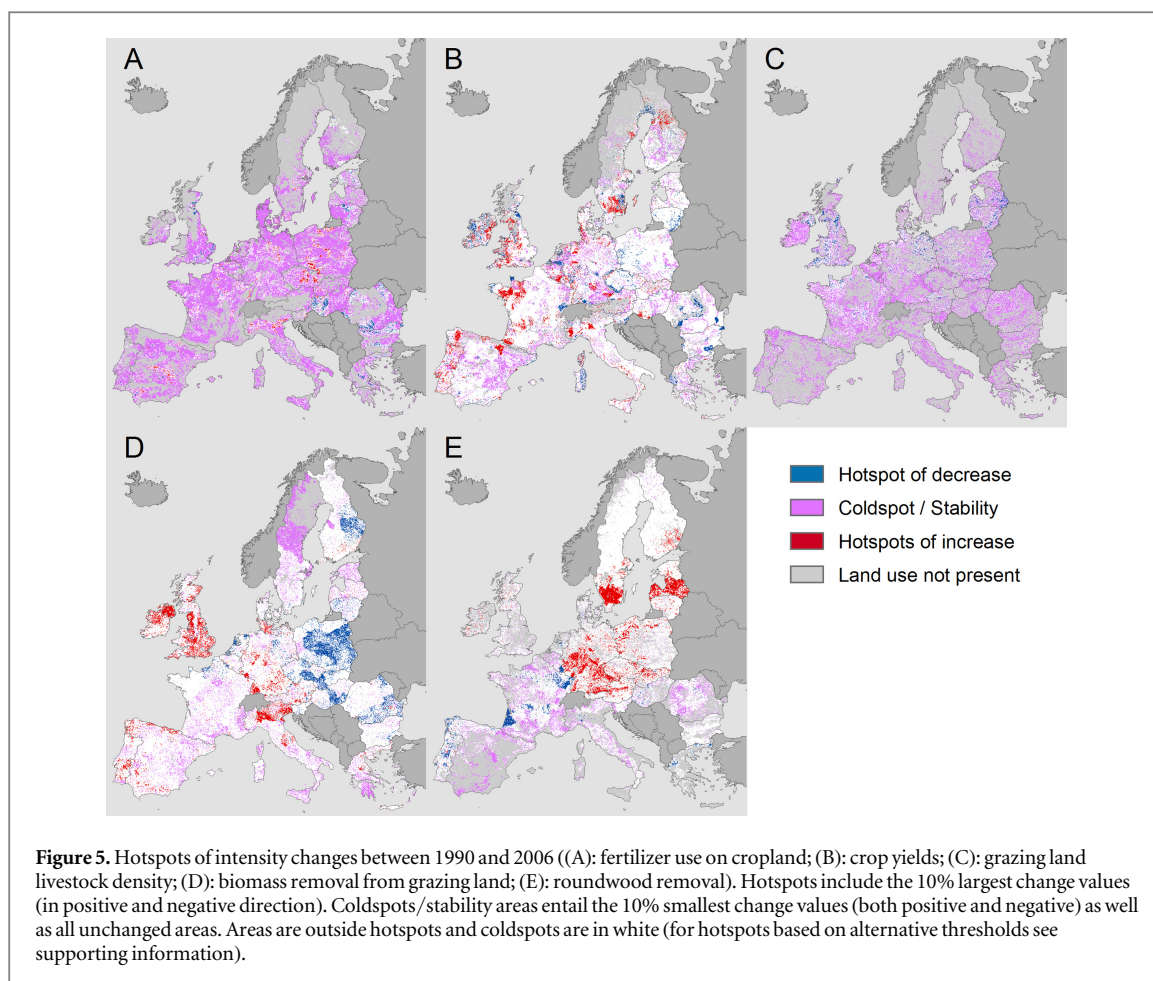
We here analyzed spatial patterns of land-use change in Europe since 1990. While a range of studies have explored European land-use change, these studies were typically carried out for small study regions, over short time periods, or on the level of coarse administrative units. To the best of our knowledge, our study is the first to consistently map changes in the extent of as well as changes in management intensity for cropland, grazing land, forestry, and urban areas at high spatial resolution across all of Europe—thereby highlighting the substantial geographic variation in land-use change processes found in Europe. Four cross-cutting patterns emerge when synthesizing across the



individual land-use change processes we assessed: (1) a clear, but not ubiquitous East–West divide in terms of land-use change, (2) spatially diverging trends of stable or intensifying agriculture in areas highly suitable for agriculture, and disintensification and abandonment in more marginal areas, (3) a spatial separation of areas with increasing forest area and increasing management intensity, and (4) a marked geographic heterogeneity of land-use change, with pockets of co-occurring area decline and intensification, as well as co-occurring area increase and disintensification scattered across of Europe. While our goal was not to assess the causal drivers of the observed land-use change trends, we here provide interpretations of these recurring patterns, address limitations of our approach, and provide suggestions for follow-up work.

We found a strong East–West divide in terms of land-use change during 1990–2006, with fairly constant cropland area but stable or increasing land management intensity in the West, and declining cropland area and intensity in the East (figures 2 and 4), thereby confirming prior work based on individual case studies (Krönert *et al* 1999, Feranec *et al* 2007), systematic reviews and cross-site comparison (Palang *et al* 2006, Feranec *et al* 2012, van Vliet *et al* 2015), or coarse-scale land-use statistics (Niedertscheider *et al* 2014, Gingrich *et al* 2015, Jepsen *et al* 2015). Two factors appear to contribute to these patterns in major ways. First, the

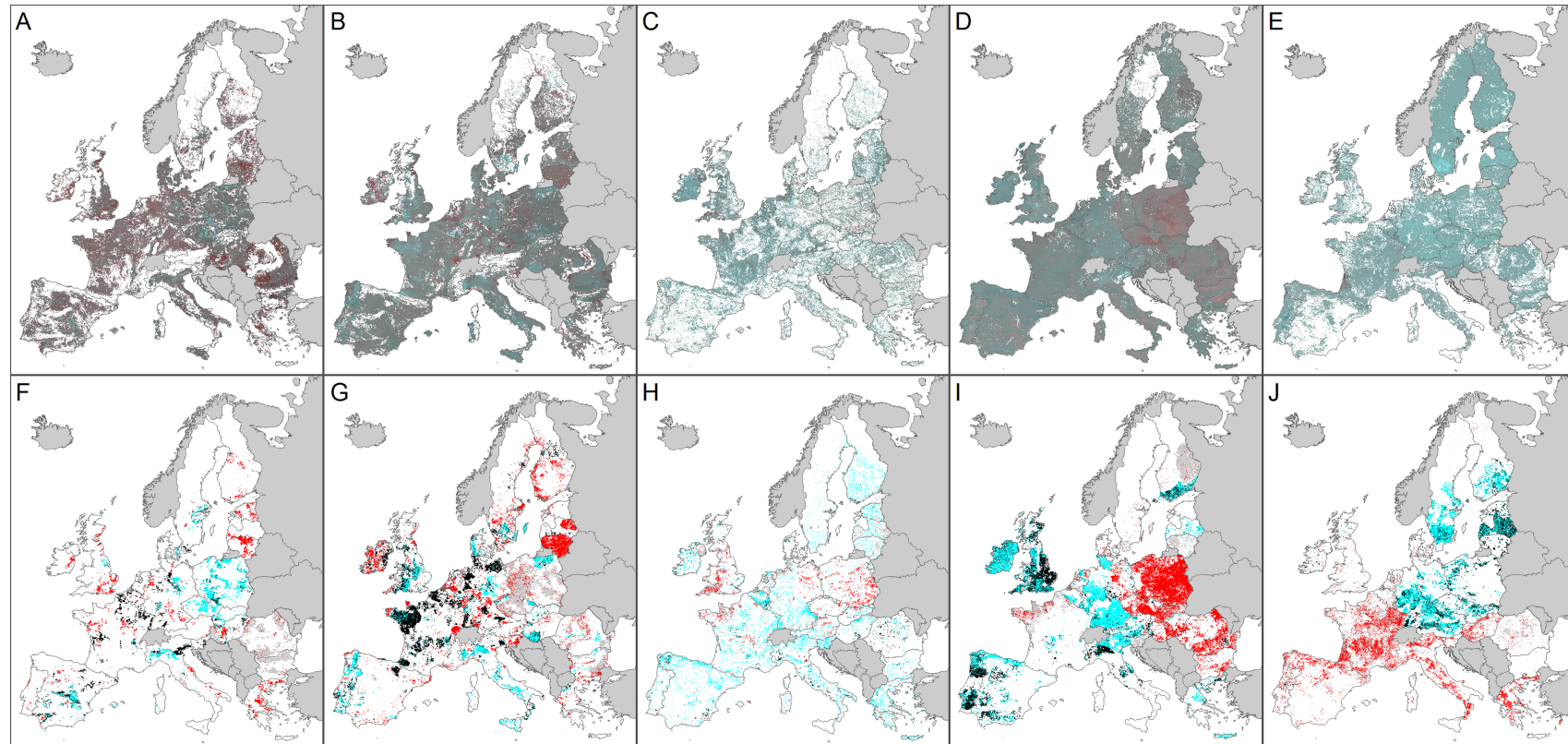
breakdown of socialism in 1989 triggered widespread agricultural abandonment (Henebry 2009, Schierhorn *et al* 2013, Estel *et al* 2015) and a strong decline of capital-intensive farming practices (e.g., lower pesticides and fertilizer applications) throughout Eastern Europe (Rozelle and Swinnen 2004). However, land reforms, the level and pace of reorganization of agricultural sectors, and state-support for agriculture differed substantially among countries (Swinnen 2000, Lerman *et al* 2004), resulting in the spatial heterogeneity of land-use change within Eastern Europe observed in our analyses (figures 2 and 4). Second, some areas in Eastern Europe were never collectivized and industrialized, and thus did not reach the intensity levels of the West (Palang *et al* 2000, Rozelle and Swinnen 2004, Fischer *et al* 2012). Agricultural intensification in the 19th and 20th century also began later and progressed slower in Europe’s East than in its West (Jepsen *et al* 2015). thus, yields gaps are higher in Eastern Europe and intensification easier, likely in part explaining the patterns of stronger agriculture intensification we found for some Eastern Europe regions (figure 4). Third, farmers in Western Europe generally benefitted in the 1990 s from a massive support system under the EU’s Common Agricultural Policy (CAP), while Eastern Europe’s farmers had no access to these subsidies during most of our study period (Shucksmith *et al* 2008, Hodge *et al* 2015). This changed with the eastward expansion of the EU in 2004 and 2007, after



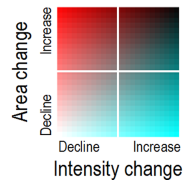
which we found hotspots of cropland expansion in 2006–2012 (figure 2).

A second major land-use change in the EU-27 after 1990 was the contraction of cropland in areas not well-

sited for agriculture (figures 2 and 3), thereby confirming case-study evidence from Europe's mountain regions (MacDonald *et al* 2000, Tasser *et al* 2007, Rutherford *et al* 2008), the Mediterranean (Stellmes *et al* 2013, Plieninger *et al* 2014), Northern Europe (Larsson and Nilsson 2005, Beilin *et al* 2014), and Eastern Europe (Baur *et al* 2006, Müller *et al* 2009). Major agro-ecological limitations (e.g., water shortages during the growing period, rugged terrain) and socio-economic constraints (e.g., low market accessibility, labor shortage, structural change in agriculture) result in a declining profitability of traditional and mixed farming in these regions, leading to abandonment (Baldock *et al* 1996, Navarro and Pereira 2012, Stellmes *et al* 2013, Terres *et al* 2015), despite substantial CAP support for such areas (Shucksmith *et al* 2008, Hodge *et al* 2015). Moreover, CAP reforms during our study period also resulted in the fraction of farm support linked to production declining from 87% in 1989 to 27% in 2009, and the initiation of major set-aside schemes (Tscharntke *et al* 2011, Moore and Lobell 2015). This likely contributed to the widespread cropland to grassland conversions we found in marginal areas (figure 2). Finally, increasing displacement of cropland production to areas outside the EU contributed further to Europe's declining cropland area (Kastner *et al* 2014).



Legend top row:



Legend bottom row:

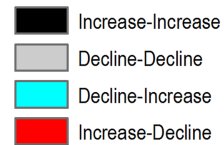


Figure 7. Area changes versus change in land management intensity between 1990 and 2006. Top row: concordance maps of changes in (A) cropland area versus fertilizer use, (B) cropland area versus yields, (C) pasture area versus fertilizer use, (D) pasture area versus yields, (E) forest area versus wood removals. Bottom row: Clusters of significant associations of area and intensity changes (increase/increase, increase/decline, decline/increase, and decline/decline) for changes in (F) cropland area versus fertilizer use, (G) cropland area versus yields, (H) pasture area versus fertilizer use, (I) pasture area versus yields, (J) forest area versus wood removals. Spatial association were significant based on Moran's I ($p < 0.05$).

Forest area increased across most of Europe, mainly in regions characterized by cropland and pasture decline (figure 2) linked to ongoing urbanization (Antrop 2004) and emigration from the more remote rural areas (Poyatos *et al* 2003, Piquer-Rodríguez *et al* 2012, Stellmes *et al* 2013, Terres *et al* 2015). Gains in forestland also occurred in regions with afforestation programs (e.g. United Kingdom and Ireland, Zanchi *et al* 2007). These changes are likely part of a more long-term recovery from historical deforestation, which happened earlier in Western and Central Europe compared to Eastern and Southern Europe (Mather and Needle 1999, Fuchs *et al* 2013). However, our analysis also revealed that deforestation has occurred, notably in Southern Spain and Portugal, which often remains unnoticed in the statistics of net forest area change (Nabuurs *et al* 2013). Our results also showed that changes in forest extent were spatially not correlated to changes in roundwood production, highlighted by the increasing harvests on stable forestland in Northern, Central and Eastern Europe versus stable harvests on increasing forestland in the Mediterranean (figure 7). This can be explained by the fact that young forests do not immediately increase wood supply and that Mediterranean forest may be more important for other services than wood production. The observed increasing harvest in Eastern Europe likely are linked to the privatization of state forests and the modernization of wood processing industry, following the collapse of socialist systems (Bemmann and Grosse 2001, Ioras and Abrudan 2006, Munteanu *et al* 2016). We also note that some of our hotspots of increasing and decreasing wood removals coincided with regions where major wind-throws resulted in large salvage harvests in our observation period (e.g., southern Sweden, Latvia, and southeastern France).

Prior work has highlighted a stable cropland extent in regions well-suited for farming for Western and Central Europe (Rounsevell *et al* 2012, Plutzer *et al* 2016). Our results confirm these studies (figures 2 and 3), but furthermore suggest that agricultural intensity remained stable or increased there after 1990 (figure 7). Likewise, fertile regions in Eastern Europe, such as southern Romania, Hungary, the Czech Republic or some parts of Poland, had increasing cropland use intensity (e.g., fertilizer use), and were even hotspots of cropland expansion during our observation period. Our study thus bolsters earlier work based on case studies or broad-scale statistics suggesting an increasing concentration of agriculture in suitable areas, sometimes occurring next to areas characterized by disintensification and abandonment (Robinson and Sutherland 2002, Stoate *et al* 2009, Piquer-Rodríguez *et al* 2012, Vanwambeke *et al* 2012, Jepsen *et al* 2015). Yet, our overlay analyses (figure 7) goes further in highlighting the heterogeneous spatial patterns at which the spatial reorganization of agriculture occurs, both in Europe's West and East (e.g., figure 7). Yield increases in intensifying areas were

overall moderate though, especially in Europe's West, possibly as a result of the decoupling of subsidy payments and commodity outputs, policies to reduce fertilizer use, and to a lesser extent climate change (Bindi and Olesen 2010, Rounsevell *et al* 2012, Moore and Lobell 2015).

A number of limitations and factors contributing to uncertainty need mentioning. First, while we gathered a comprehensive land-use change dataset for Europe, we were unable to include some potentially important agricultural indicators (e.g., mechanization, pesticide use, labor) or forestry indicators (e.g., harvest regime, tree species and provenance selection, fertilizer use, extraction of logging residues and stumps), as well as information on non-productive land uses (e.g., recreation), due to the absence of European-wide spatial data. Spatial information is particularly lacking regarding forests management, and while we were able to include one indicator (roundwood production) other indicators to characterize forest management intensity (Luyssaert *et al* 2011, Schall and Ammer 2013) would have enriched our analyses. Second, several of the intensity indicators we used are based on statistical data, which are sometimes of unknown reliability and may underestimate intensity (e.g., due to unregistered wood removal). While our aggregation/disaggregation procedures removed some of these inconsistencies (e.g., mismatch between CORINE and CAPRI cropland extent), we cannot rule out that errors in our input data have not propagated into our result. Third, several of our indicators represent snapshots in time, which may be less problematic for area changes, but could affect our intensity measures because temporally and spatially variable phenomena may affect management intensity more strongly (e.g., droughts that reduce yields, or salvage logging following storms or insect outbreaks). Fourth, our MODIS-based abandonment mapping did only partly cover our observation period, because MODIS data are only available since 2000. As such, our MODIS-based abandonment/recultivation maps should mainly be seen as complementing the CAPRI/CORINE-based cropland/grazing land information by expanding the time period until 2012 for these transient land-use change processes. Finally, our threshold criterion for selecting hotspots was arbitrary, and different thresholds result in smaller or larger hotspots and coldspots of land-use change (figures S3 and S4). Importantly though, our sensitivity analyses shows that the spatial pattern of hotspots identified would not change in major ways.

Compiling a thematically rich, spatially-detailed, and internally consistent land-use change database for all of Europe required us to partly rely on land-use statistics, that are often only available at coarse scale (e.g., NUTS-2 or 3), and to homogenize and summarize all datasets to our common 3 km target grid. Several of our indicators thus required disaggregating and aggregating input data (Neumann *et al* 2009, Temme and

Verburg 2011, Verkerk *et al* 2015). Disaggregation often relies on ancillary data such as land-cover maps, meaning that uncertainty in input layers may propagate into derivative maps. A formal sensitivity analysis regarding all methodological steps taken to derive the input indicators would and their possible effects on our hotspot and intensity versus area change maps is not feasible. We note though that all of these indicators have undergone rigorous robustness tests and validation efforts, which are documented in the respective publications detailing these indicators (Neumann *et al* 2009, Temme and Verburg 2011, Estel *et al* 2015, Verkerk *et al* 2015, Plutzer *et al* 2016).

Understanding the spatial patterns of changes in the extent and intensity of land use, and how these relate to each other, is important for understanding land-use change trajectories. Our analyses highlight the diverse spatiotemporal patterns, as well as hotspots and coldspots of land-use changes in Europe, and the importance of jointly considering changes in the extent and management intensity of broad land use categories. Moreover, our analyses highlight spatially-explicit land-use changes (e.g., patterns of cropland expansion and contraction), which are typically hidden in regional or national level statistics that capture net change only. For example, most regions were relatively stable in regard to many indicators we assessed, but also typically fell into at least one hotspot of land-use change (figure 6). Likewise, hotspots of change were often rather scattered, with regions dominated by one land-use change sometimes bordering regions where the opposite change was prevailing (figures 2 and 4). Our overlay analyses further emphasized that area changes and intensity changes often occur spatially segregated (e.g., abandonment alongside recultivation/intensification in Eastern Europe, figures 2 and 7). In another example, increasing input intensity (i.e., fertilizer use in our case) was not necessarily related to increasing output intensity (i.e., yields) and vice versa (figure 4).

Collectively, our study thus backs up calls for a more context-specific, regionalized policy-making (Shucksmith *et al* 2008, Fischer *et al* 2012, van Eupen *et al* 2012), for better understanding the outcomes of land-use change for ecosystem service flows and biodiversity, and for understanding and possibly lessening the trade-offs among different land uses. Deriving typologies of typical land-use changes characterizing Europe is thus an interesting arena for future research (Levers *et al* 2015, Stürck *et al* 2015). Likewise, research focusing on the causes of the land-use change patterns we have observed and mapped would be beneficial, including assessing the outcome of policy interventions (e.g., CAP reforms, Natura2000, agro-environment schemes, sugar market liberalization, biofuel policies) and institutional reforms (e.g. privatization of state owned forests), and the relative importance of climate change in reshaping European land use.

Finally, our results can provide entry points for assessing the outcomes of land-use changes for ecosystems, their functioning, and the services they provide to society.

Acknowledgments

We would like to thank C Kroisleitner for help in preparing some of the input layers, and H Haberl, P Hostert, P Meyfroidt, J O Nielsen, and T Plieninger for fruitful discussions in earlier stages of this manuscript. The constructive and helpful comments by three anonymous reviewers improved this manuscript greatly and we are grateful for their efforts. We gratefully acknowledge funding by the European Commission (Integrated Projects VOLANTE 265104 and HERCULES 603447, and ERC Starting Grants 263522 LUISE and 311819 GLOLAND), the Einstein Foundation, Berlin (EJF-2011-76), and the Austrian Science Funds (FWF, Project P20812-G11). This research contributes to the Global Land Project (www.globallandproject.org).

References

- Aide T M and Grau H R 2004 Globalization, migration, and latin american ecosystems *Science* **305** 1915–6
- Anselin L 1995 Local indicators of spatial association—LISA *Geogr. Anal.* **27** 93–115
- Antrop M 2004 Landscape change and the urbanization process in Europe *Landscape Urban Plan.* **67** 9–26
- Baldock D, Beaufoy G, Brouwer F and Godeschalk F 1996 *Farming at the Margins: Abandonment or Redeployment of Agricultural Land in Europe* (London: Institute for European and Environmental Policy and Agricultural Economics Research Institute)
- Baur B, Cremene C, Groza G, Rakosy L, Schileyko A A, Baur A, Stoll P and Erhardt A 2006 Effects of abandonment of subalpine hay meadows on plant and invertebrate diversity in Transylvania, Romania *Biol. Conservation* **132** 261–73
- Beilin R *et al* 2014 Analysing how drivers of agricultural land abandonment affect biodiversity and cultural landscapes using case studies from Scandinavia, Iberia and Oceania *Land Use Policy* **36** 60–72
- Bemmann A and Grosse W 2001 Changes of forest ownership in the countries of transition in Middle and East Europe *Allg. Forst Jagdzeitung* **172** 173–83
- Bindi M and Olesen J E 2010 The responses of agriculture in Europe to climate change *Reg. Environ. Change* **11** 151–8
- Britz W and Witzke H P 2012 CAPRI Model Documentation 2012 (www.capri-model.org) (accessed 11 January 2016)
- Büttner G, Feranec J, Jaffrain G, Mari L, Maucha G and Soukup T 2004 The European CORINE land cover 2000 project *20th Congress of Int. Society for Photogrammetry and Remote Sensing (Istanbul, Turkey)*
- Ciais P *et al* 2008 Carbon accumulation in European forests *Nat. Geosci.* **1** 425–9
- Deng X, Huang J, Rozelle S and Uchida E 2008 Growth, population and industrialization, and urban land expansion of China *J. Urban Econ.* **63** 96–115
- Ellis E C, Kaplan J O, Fuller D Q, Vavrus S, Klein Goldewijk K and Verburg P H 2013 Used planet: a global history *Proc. Natl Acad. Sci. USA* **110** 7978–85
- Erb K-H, Haberl H, Jepsen M R, Kuemmerle T, Lindner M, Müller D, Verburg P H and Reenberg A 2013a A conceptual

- framework for analysing and measuring land-use intensity *Curr. Opin. Environ. Sustainability* **5** 464–70
- Erb K-H, Kastner T, Luysaert S, Houghton RA, Kuemmerle T, Olofsson P and Haberl H 2013b Bias in the attribution of forest carbon sinks *Nat. Clim. Change* **3** 854–6
- Estel S, Kuemmerle T, Alcantara C, Levers C, Prishchepov A V and Hostert P 2015 Mapping farmland abandonment and recultivation across Europe using MODIS NDVI time series *Remote Sens. Environ.* **163** 312–25
- Fares S, Mugnozza G S, Corona P and Palahí M 2015 Sustainability: five steps for managing Europe's forests *Nature* **519** 407–9
- Feranec J, Hazeu G, Christensen S and Jaffrain G 2007 Corine land cover change detection in Europe (case studies of the Netherlands and Slovakia) *Land Use Policy* **24** 234–47
- Feranec J, Soukup T, Hazeu G and Jaffrain G 2012 Land cover and its change in Europe *Remote Sensing of Land Use and Land Cover* (Boca Raton, FL: CRC Press) pp 285–302
- Fischer J, Hartel T and Kuemmerle T 2012 Conservation policy in traditional farming landscapes *Conservation Lett.* **5** 167–75
- Foley J A *et al* 2005 Global consequences of land use *Science* **309** 570–4
- Foley J A *et al* 2011 Solutions for a cultivated planet *Nature* **478** 337–42
- Forest Europe 2011 State of Europe's forests 2011, status and trends in sustainable forest management in Europe *Ministerial Conf. on the Protection of Forests in Europe* (Oslo, Aas: UNECE, FAO—Forest Europe Liaison Unit)
- Fuchs R, Herold M, Verburg P H and Clevers J G P W 2013 A high-resolution and harmonized model approach for reconstructing and analyzing historic land changes in Europe *Biogeosci.* **10** 1543–59
- Gasparri N I and de Waroux Y I P 2014 The coupling of South American soybean and cattle production frontiers: new challenges for conservation policy and land change science *Conservation Lett.* **8** 290–8
- Geist H J and Lambin E F 2002 Proximate causes and underlying driving forces of tropical deforestation *Bioscience* **52** 143–50
- Gerard F *et al* 2010 Land cover change in Europe between 1950 and 2000 determined employing aerial photography *Prog. Phys. Geography* **34** 183–205
- Gingrich S *et al* 2015 Exploring long-term trends in land use change and aboveground human appropriation of net primary production in nine European countries *Land Use Policy* **47** 426–38
- Gold S, Korotkov A V and Sasse V 2006 The development of European forest resources, 1950–2000 *Forest Policy Econ.* **8** 183–92
- Graesser J, Aide T M, Grau H R and Ramankutty N 2015 Cropland/pastureland dynamics and the slowdown of deforestation in Latin America *Environ. Res. Lett.* **10** 034017
- Haberl H, Erb K H, Krausmann F, Gaube V, Bondeau A, Plutzer C, Gingrich S, Lucht W and Fischer-Kowalski M 2007 Quantifying and mapping the human appropriation of net primary production in earth's terrestrial ecosystems *Proc. Natl Acad. Sci. USA* **104** 12942–7
- Hansen M C *et al* 2013 High-resolution global maps of 21st-century forest cover change *Science* **342** 850–3
- Hatna E and Bakker M M 2011 Abandonment and expansion of arable land in Europe *Ecosystems* **14** 720–31
- Heckeley T and Kempen M 2011 Final Report—CAPRI-DYNASPAT (Common Agricultural Policy Regional Impact Assessment—The Dynamic and Spatial Dimension) (http://cordis.europa.eu/result/rcn/49669_en.html) (accessed 11 January 2016)
- Henebry G M 2009 Carbon in idle croplands *Nature* **457** 1089–90
- Hodge I, Hauck J and Bonn A 2015 The alignment of agricultural and nature conservation policies in the European Union *Conservation Biol.* **29** 996–1005
- Ioras F and Abrudan I V 2006 The Romanian forestry sector: privatisation facts *Int. Forestry Rev.* **8** 361–7
- Jepsen M R *et al* 2015 Transitions in European land-management regimes between 1800 and 2010 *Land Use Policy* **49** 53–64
- Jones-Walters L and Čivić K 2013 European protected areas: past, present and future *J. Nat. Conservation* **21** 122–4
- Kastner T, Erb K-H and Haberl H 2014 Rapid growth in agricultural trade: effects on global area efficiency and the role of management *Environ. Res. Lett.* **9** 034015
- Krönert R, Baudry J, Bowler I R and Reenberg A (ed) 1999 *Land-Use Changes and Their Environmental Impact in Rural Areas in Europe* (Oxfordshire, UK: CABI)
- Kuemmerle T *et al* 2013 Challenges and opportunities in mapping land use intensity globally *Curr. Opin. Environm. Sustainability* **5** 484–93
- Kuemmerle T, Kaplan J O, Prishchepov A V, Rylsky I, Chaskovskyy O, Tikunov V S and Müller D 2015 Forest transitions in Eastern Europe and their effects on carbon budgets *Glob. Change Biol.* **21** 3049–61
- Lambin E F and Meyfroidt P 2011 Global land use change, economic globalization, and the looming land scarcity *Proc. Natl Acad. Sci.* **108** 3465–72
- Larsson S and Nilsson C 2005 A remote sensing methodology to assess the costs of preparing abandoned farmland for energy crop cultivation in northern Sweden *Biomass Bioenergy* **28** 1–6
- Leip A, Marchi G, Koeble R, Kempen M, Britz W and Li C 2008 Linking an economic model for European agriculture with a mechanistic model to estimate nitrogen and carbon losses from arable soils in Europe *Biogeosciences* **5** 73–94
- Lenzen M, Moran D, Kanemoto K, Foran B, Lobefaro L and Geschke A 2012 International trade drives biodiversity threats in developing nations *Nature* **486** 109–12
- Lerman Z, Csaki C and Feder G 2004 Evolving farm structures and land-use patterns in former socialist countries *Q. J. Int. Agric.* **43** 309–35
- Levers C *et al* 2015 Archetypical patterns and trajectories of land systems in Europe *Reg. Environ. Change* **1–18** in press
- Levers C, Verkerk P J, Müller D, Verburg P H, Butsic V, Leitão P J, Lindner M and Kuemmerle T 2014 Drivers of forest harvesting intensity patterns in Europe *Forest Ecology Manage.* **315** 160–72
- Luysaert S, Hessenmöller D, von Lüpke N, Kaiser S and Schulze E D 2011 Quantifying land use and disturbance intensity in forestry, based on the self-thinning relationship *Ecological Appl.* **21** 3272–84
- MA [Millennium Ecosystem Assessment] 2005 *Ecosystems and Human Well-Being: Current State and Trends* (Washington DC: Island)
- MacDonald D, Crabtree J R, Wiesinger G, Dax T, Stamou N, Fleury P, Lazpita J G and Gibon A 2000 Agricultural abandonment in mountain areas of Europe: environmental consequences and policy response *J. Environ. Manage.* **59** 47–69
- Mather A S and Needle C L 1999 Development, democracy and forest trends *Glob. Environ. Change* **9** 105–18
- Mayer A L, Kauppi P E, Angelstam P K, Zhang Y and Tikka P M 2005 Importing timber, exporting ecological impact *Science* **308** 359–60
- McGrath M J *et al* 2015 Reconstructing European forest management from 1600 to 2010 *Biogeosci. Discuss* **12** 5365–433
- Meyfroidt P and Lambin E 2011 Global forest transition: prospects for an end to deforestation *Annu. Rev. Environ. Resour.* **36** 343–71
- Moore F C and Lobell D B 2015 The fingerprint of climate trends on European crop yields *Proc. Natl Acad. Sci. USA* **112** 2670–5
- Mueller N D, Gerber J S, Johnston M, Ray D K, Ramankutty N and Foley J A 2012 Closing yield gaps through nutrient and water management *Nature* **490** 254–7
- Munteanu C, Nita M D, Abrudan I V and Radeloff V C 2016 Historical forest management in Romania is imposing strong legacies on contemporary forests and their management *Forest Ecology Manage.* **361** 179–93
- Müller D, Kuemmerle T, Rusu M and Griffiths P 2009 Lost in transition. Determinants of cropland abandonment in postsocialist Romania *J. Land Use Sci.* **4** 109–29

- Nabuurs G-J, Lindner M, Verkerk P J, Gunia K, Deda P, Michalak R and Grassi G 2013 First signs of carbon sink saturation in European forest biomass *Nature Clim. Change* **3** 792–6
- Navarro L and Pereira H 2012 Rewilding abandoned landscapes in Europe *Ecosystems* **15** 900–12
- Neumann K, Elbersen B, Verburg P, Staritsky I, Pérez-Soba M, de Vries W and Rienks W 2009 Modelling the spatial distribution of livestock in Europe *Landscape Ecology* **24** 1207–22
- Niedertscheider M, Kuemmerle T, Müller D and Erb K-H 2014 Exploring the effects of drastic institutional and socio-economic changes on land system dynamics in Germany between 1883 and 2007 *Glob. Environ. Change* **28** 98–108
- Overmars K P, Schulp C J E, Alkemade R, Verburg P H, Temme A J A M, Omtzigt N and Schaminée J H J 2014 Developing a methodology for a species-based and spatially explicit indicator for biodiversity on agricultural land in the EU *Ecological Indicators* **37** 186–98
- Palang H, Hiimäe O, Sepp K, Ivask M and Mander Ü 2000 Predicting the future of Estonian agricultural landscapes: a scenario approach ed Ü Mander and R H G Jongman *Landscape Perspectives of Land Use Changes* (Southampton, Boston: WIT) pp 107–30
- Palang H, Printsman A, Gyuro E K, Urbanc M, Skowronek E and Woloszyn W 2006 The forgotten rural landscapes of Central and Eastern Europe *Landscape Ecology* **21** 347–57
- Piquer-Rodríguez M, Kuemmerle T, Alcaraz-Segura D, Zurita-Milla R and Cabello J 2012 Future land use effects on the connectivity of protected area networks in southeastern Spain *J. Nat. Conservation* **20** 326–36
- Pliening T, Hui C, Gaertner M and Huntsinger L 2014 The impact of land abandonment on species richness and abundance in the Mediterranean Basin: a meta-analysis *PloS One* **9** e98355
- Plutzer C *et al* 2016 Changes in the spatial patterns of human appropriation of net primary production (HANPP) in Europe 1990–2006 *Reg. Environ. Change* **16** 1225–38
- Poyatos R, Latron J and Llorens P 2003 Land use and land cover change after agricultural abandonment—the case of a Mediterranean mountain area (Catalan Pre-Pyrenees) *Mt. Res. Dev.* **23** 362–8
- Pretzsch H, Biber P, Schütze G, Uhl E and Rötzer T 2014 Forest stand growth dynamics in Central Europe have accelerated since 1870 *Nat. Comm.* **12** 4967
- Robinson R A and Sutherland W J 2002 Post-war changes in arable farming and biodiversity in Great Britain *J. Appl. Ecology* **39** 157–76
- Rounsevell M D A *et al* 2012 Challenges for land system science *Land Use Policy* **29** 899–910
- Rozelle S and Swinnen J F M 2004 Success and failure of reform: Insights from the transition of agriculture *J. Econ. Literature* **42** 404–56
- Rudel T K *et al* 2009 Agricultural intensification and changes in cultivated areas, 1970–2005 *Proc. Natl Acad. Sci. USA* **106** 20675–80
- Rudel T K, Coomes O T, Moran E, Achard F, Angelsen A, Xu J C and Lambin E 2005 Forest transitions: towards a global understanding of land use change *Glob. Environ. Change—Hum. Policy Dimens.* **15** 23–31
- Rutherford G N, Bebi P, Edwards P J and Zimmermann N E 2008 Assessing land-use statistics to model land cover change in a mountainous landscape in the European Alps *Ecological Modelling* **212** 460–71
- Schall P and Ammer C 2013 How to quantify forest management intensity in Central European forests *Eur. J. Forest Res.* **132** 379–96
- Schierhorn F, Müller D, Beringer T, Prishchepov A V, Kuemmerle T and Balmann A 2013 Post-soviet cropland abandonment and carbon sequestration in European Russia, Ukraine, and Belarus *Glob. Biogeochem Cycles* **27** 1175–85
- Seto K C, Reenberg A, Boone C G, Fragkias M, Haase D, Langanke T, Marcotullio P, Munroe D K, Olah B and Simon D 2012 Urban land teleconnections and sustainability *Proc. Natl Acad. Sci.* **109** 7687–92
- Shucksmith M, Thomson K J and Roberts D 2008 *The CAP and the Regions: the Territorial Impact of the Common Agricultural Policy* (Oxfordshire, UK: CABI)
- Stellmes M, Roder A, Udelhoven T and Hill J 2013 Mapping syndromes of land change in Spain with remote sensing time series, demographic and climatic data *Land Use Policy* **30** 685–702
- Stoate C, Baldi A, Beja P, Boatman N D, Herzon I, van Doorn A, de Snoo G R, Rakosy L and Ramwell C 2009 Ecological impacts of early 21st century agricultural change in Europe—a review *J. Environ. Manage.* **91** 22–46
- Stürck J *et al* 2015 Simulating and delineating future land change trajectories across Europe *Reg. Environ. Change* **1**–17
- Swinnen J F M 2000 Policy reform and agricultural adjustment in transition countries *IATRC Summer Symp.: Adjusting to Domestic and Int. Agricultural Policy Reform in Industrial Countries* (Philadelphia, Pennsylvania, USA)
- Tasser E, Walde J, Tappeiner U, Teutsch A and Noggler W 2007 Land-use changes and natural reforestation in the Eastern Central Alps *Agric. Ecosystems Environ.* **118** 115–29
- Taubenböck H, Esch T, Felber A, Wiesner M, Roth A and Dech S 2012 Monitoring urbanization in mega cities from space *Remote Sens. Environ.* **117** 162–76
- Temme A J A M and Verburg P H 2011 Mapping and modelling of changes in agricultural intensity in Europe *Agric. Ecosystems Environ.* **140** 46–56
- Terres J-M *et al* 2015 Farmland abandonment in Europe: identification of drivers and indicators, and development of a composite indicator of risk *Land Use Policy* **49** 20–34
- Tilman D, Balzer C, Hill J and Befort B L 2011 Global food demand and the sustainable intensification of agriculture *Proc. Natl Acad. Sci. USA* **108** 20260–4
- Tscharntke T, Batáry P and Dormann C F 2011 Set-aside management: how do succession, sowing patterns and landscape context affect biodiversity? *Agric. Ecosystems Environ.* **143** 37–44
- Turner B L II, Lambin E F and Reenberg A 2007 The emergence of land change science for global environmental change and sustainability *Proc. Natl Acad. Sci. USA* **104** 20666–71
- van Eupen M, Metzger M J, Pérez-Soba M, Verburg P H, van Doorn A and Bunce R G H 2012 A rural typology for strategic European policies *Land Use Policy* **29** 473–82
- Vanwambeke S O, Meyfroidt P and Nikodemus O 2012 From USSR to EU: 20 years of rural landscape changes in Vidzeme, Latvia *Landscape Urban Plan.* **105** 241–9
- Verburg P H, Neumann K and Nol L 2011 Challenges in using land use and land cover data for global change studies *Glob. Change Biol.* **17** 974–89
- Verburg P H, van de Steeg J, Veldkamp A and Willemen L 2009 From land cover change to land function dynamics: a major challenge to improve land characterization *J. Environ. Manage.* **90** 1327–35
- Verkerk P J, Levers C, Kuemmerle T, Lindner M, Valbuena R, Verburg P H and Zudin S 2015 Mapping wood production in European forests *Forest Ecology Manage.* **357** 228–38
- Vilén T, Cienciala E, Schelhaas M J, Verkerk P J, Lindner M and Peltola H 2015 Increasing carbon sinks in European forests: effects of afforestation and changes in mean growing stock volume *Forestry* **89** 82–90
- van Vliet J, de Groot H L F, Rietveld P and Verburg P H 2015 Manifestations and underlying drivers of agricultural land use change in Europe *Landscape Urban Plan.* **133** 24–36
- Whittingham M J 2011 The future of agri-environment schemes: biodiversity gains and ecosystem service delivery? *J. Appl. Ecology* **48** 509–13
- Zanichi G, Thiel D, Green T and Lindner M 2007 Forest area changes and afforestation in Europe: critical analysis of available data and the relevance for international environmental policies *EFI Technical Report 24* Joensuu, European Forest Institute