

Separating heat stress from moisture stress: analyzing yield response to high temperature in irrigated maize

This content has been downloaded from IOPscience. Please scroll down to see the full text.

2016 Environ. Res. Lett. 11 094012

(<http://iopscience.iop.org/1748-9326/11/9/094012>)

View [the table of contents for this issue](#), or go to the [journal homepage](#) for more

Download details:

IP Address: 210.77.64.109

This content was downloaded on 11/04/2017 at 04:30

Please note that [terms and conditions apply](#).

You may also be interested in:

[The impact of climate extremes and irrigation on US crop yields](#)

T J Troy, C Kipgen and I Pal

[The impacts of future climate and carbon dioxide changes on the average and variability of US maize yields under two emission scenarios](#)

Daniel W Urban, Justin Sheffield and David B Lobell

[Placing bounds on extreme temperature response of maize](#)

Christopher J Anderson, Bruce A Babcock, Yixing Peng et al.

[Intensity of heat stress in winter wheat—phenology compensates for the adverse effect of global warming](#)

Ehsan Eyshi Rezaei, Stefan Siebert and Frank Ewert

[Global crop yield response to extreme heat stress under multiple climate change futures](#)

Delphine Deryng, Declan Conway, Navin Ramankutty et al.

[Impact of heat stress on crop yield—on the importance of considering canopy temperature](#)

Stefan Siebert, Frank Ewert, Ehsan Eyshi Rezaei et al.

[Variations in the sensitivity of US maize yield to extreme temperatures by region and growth phase](#)

Ethan E Butler and Peter Huybers

[Quantifying yield gaps in wheat production in Russia](#)

Florian Schierhorn, Monireh Faramarzi, Alexander V Prishchepov et al.

[Influences of increasing temperature on Indian wheat: quantifying limits to predictability](#)

Ann-Kristin Koehler, Andrew J Challinor, Ed Hawkins et al.



LETTER

Separating heat stress from moisture stress: analyzing yield response to high temperature in irrigated maize

OPEN ACCESS

RECEIVED

1 November 2015

REVISED

24 May 2016

ACCEPTED FOR PUBLICATION

3 June 2016

PUBLISHED

7 September 2016

Elizabeth K Carter¹, Jeff Melkonian¹, Susan J Riha² and Stephen B Shaw³¹ Section of Soil and Crop Sciences, School of Integrative Plant Sciences, Cornell University, Ithaca, NY 14853, USA² Department of Earth and Atmospheric Sciences, Cornell University, Ithaca, NY 14853, USA³ SUNY College of Environmental Science and Forestry, Syracuse, NY 13210, USAE-mail: jjm11@cornell.edu**Keywords:** acclimation, climate variability, irrigation, maize, solar radiation, temperature, yieldSupplementary material for this article is available [online](#)

Original content from this work may be used under the terms of the [Creative Commons Attribution 3.0 licence](#).

Any further distribution of this work must maintain attribution to the author(s) and the title of the work, journal citation and DOI.

**Abstract**

Several recent studies have indicated that high air temperatures are limiting maize (*Zea mays* L.) yields in the US Corn Belt and project significant yield losses with expected increases in growing season temperatures. Further work has suggested that high air temperatures are indicative of high evaporative demand, and that decreases in maize yields which correlate to high temperatures and vapor pressure deficits (VPD) likely reflect underlying soil moisture limitations. It remains unclear whether direct high temperature impacts on yields, independent of moisture stress, can be observed under current temperature regimes. Given that projected high temperature and moisture may not co-vary the same way as they have historically, quantitative analyzes of direct temperature impacts are critical for accurate yield projections and targeted mitigation strategies under shifting temperature regimes. To evaluate yield response to above optimum temperatures independent of soil moisture stress, we analyzed climate impacts on irrigated maize yields obtained from the National Corn Growers Association (NCGA) corn yield contests for Nebraska, Kansas and Missouri. In irrigated maize, we found no evidence of a direct negative impact on yield by daytime air temperature, calculated canopy temperature, or VPD when analyzed seasonally. Solar radiation was the primary yield-limiting climate variable. Our analyses suggested that elevated night temperature impacted yield by increasing rates of phenological development. High temperatures during grain-fill significantly interacted with yields, but this effect was often beneficial and included evidence of acquired thermo-tolerance. Furthermore, genetics and management—information uniquely available in the NCGA contest data—explained more yield variability than climate, and significantly modified crop response to climate. Thermo-acclimation, improved genetics and changes to management practices have the potential to partially or completely offset temperature-related yield losses in irrigated maize.

Introduction

Maize (*Zea mays* L.) is the leading cereal crop produced worldwide. Maize yields have steadily increased over the past century due to breeding and improved management (Duvick 2005). Demand for maize grain is expected to expand by 50% in the developing world by 2050 (Msangi and Rosegrant 2011) while, over the same period, mean global temperature is expected to increase by up to approximately 2 °C (IPCC 2014). Statistical studies have indicated that daily maximum

temperature greater than approximately 30 °C limit maize yields (Schlenker and Roberts 2009, Lobell *et al* 2011). These studies suggest that temperature mediated limitations on maize yields will increase with projected increases in growing season temperatures (Schlenker and Roberts 2009, Lobell *et al* 2011, Lobell *et al* 2013, Deryng *et al* 2014). High temperatures and high vapor pressure deficits (VPD)—an important driver of evaporative losses—are often associated with drought and low soil moisture, and VPD has been found to be a significant explanatory variable of maize

yields (Roberts *et al* 2012, Lobell *et al* 2013, Lobell *et al* 2014). These studies either examined rainfed maize systems only or did not differentiate between irrigated and rainfed maize so that it is not possible to determine if there is a direct effect of high temperatures on maize yields independent of soil moisture stress.

Because specific correlation structures between temperature and moisture will likely not be conserved under climate change (Trenberth *et al* 2014, Williams *et al* 2014), accurate yield projections made using future climate scenarios require separately quantifying the mechanisms by which high temperature and soil moisture stress impact yield. One direct approach to do this is to analyze irrigated maize where soil moisture stress is minimized. Prior analysis of irrigated maize versus rainfed maize (Shaw *et al* 2014) found that exposure to high temperatures ($>29^{\circ}\text{C}$) reduced some rainfed maize yields but not irrigated maize yields. This analysis (Shaw *et al* 2014) examined only a limited number of sites and used county-level yield data with no information on cultivar, planting date and specific management practices (e.g., planting rate, planting date, tillage, previous crop).

Recent field and laboratory studies have reported disruption of physiological and developmental processes in irrigated maize exposed to high temperatures, indicating that high temperatures may impact maize yields by pathways independent of associated moisture stress (Schoper *et al* 1987, Dupuis and Dumas 1990, Wilhelm *et al* 1999, Cicchino *et al* 2010, Rattalino *et al* 2011). These studies indicate threshold temperatures for damage of approximately 32°C – 34°C . However statistical analyzes of reported irrigated maize yields in the US Corn belt over multiple climate years found little impact of high temperature on yield even when the reported temperature thresholds for damage were exceeded (Shaw *et al* 2014). These results, and a survey of high temperature thresholds for maize (Sanchez *et al* 2014), indicate that there is still uncertainty regarding these thresholds. In addition, both crop genetics (Duncan and Hesketh 1968, Duveck 2005, Smith *et al* 2014) and crop management practices (Winstanley and Changnon 1999, Challinor *et al* 2014) may cause shifts or modulation of apparent high temperature thresholds. These data were often not available in previous statistical analyzes of regional high temperature impacts on maize, limiting the conclusions of those studies and constraining statistical analyzes of the relevance of such parameters over broad spatial scales.

There were two objectives of this analysis. The first was to analyze irrigated maize yield data for evidence of temperature-induced yield loss at high temperature thresholds reported in experimental trials. The second was to test if genetics and crop management offer a means to adapt to high temperatures. For our analysis, we obtained irrigated maize yield data from the National Corn Growers Association (NCGA)

‘National Corn Yield Contest’ from 2005 to 2012 for three states in the western US Corn Belt (Nebraska (NE), Kansas (KS), Missouri (MO)). These states have some of the highest growing season temperatures and VPDs in the US Corn Belt. The NCGA data set included grain yields (bushels acre^{-1} at 15.5% moisture, converted to Mt ha^{-1}) from nearly 2000 entries (Methods). Critical management data (planting date, planting rate, cultivar brand and name, tillage, and previous crop) not often available in other studies were also included (Methods). These additional data allowed us to statistically control for management impacts on yield variance. In addition, with specific cultivar information available based on cultivar brand, we were able to map crop phenological growth stages over time for each yield contest entry whereas other studies have mainly used state-wide averages for characterizing crop phenology. By being able to isolate specific crop growth stages for each yield contest entry, we were able to analyze whether high temperatures coincided with specific developmental processes in maize.

Methods

Maize yield and climate station data

Irrigated maize yield data from 2005 to 2012 were obtained from the NCGA National Corn Yield Contest (<http://www.ncga.com/for-farmers/national-corn-yield-contest>) for NE, KS, and MO. Yield contest data included county location, maize yield, farm ID, planting date, planting rate, previous crop, tillage practice, and cultivar name (supporting data (SD) Methods figure S1). Contest grain yields are reported in bushels acre^{-1} (15.5% moisture) and were converted to Mt ha^{-1} in our analyzes. Grain yields were measured with a calibrated yield monitor from a 0.5 ha section of a field that contest rules specify must be at least 4 ha in area planted to the reported cultivar. The NCGA has strict rules governing the contests, and verifies that all operations are done following these rules. All contest yields are verified by the NCGA. The high reported contest yields indicate near-optimal management in all contest entries. These near-optimal management conditions, together with the extensive data on management among entries, allowed for yield response due to climate to be analyzed relative to yield response due to management.

Controlling for temperature impacts on crop phenology

Yield contest entries were associated with hourly climate data from 66 state mesonet stations associated with the Automated Weather Data Network of the High Plains Regional Climate Center and Missouri Mesonet. Since the reported entry location was only by county and no finer measure of location was provided, it was necessary to identify a weather station in close proximity to, or within, each county with yield contest

entries. To do this, the average growing season growing degree day (GDD) accumulation for each year was calculated for each NCGA yield contest county using the nearest weather station from a list of stations within 200 GDD of the associated county mean (SD Methods, figure S2). This associated weather station was also used as a proxy for location in the mixed effects models described below.

In the US Corn Belt, maize phenological development is primarily a function of thermal-time (counted as GDD) (Bonhomme *et al* 1994). Planting date and product information on GDD to silking and GDD to physiological maturity for the cultivars in the NCGA data set were used to determine the cultivar-specific GDD requirement for each of the three crop growth stages: ‘early growth’ (EG), ‘reproductive period’ (Sen), and ‘grain-fill’ (G) (SD Methods, figure S3). These GDD data, combined with planting date and weather station associated with each entry, allowed us to calculate climate variables over both the entire growing season and by growth stage for each cultivar. Controlling for temperature impacts on crop phenology was important in this study for several reasons. First, knowing when a heat stress event occurred during phenological development provides evidence regarding the mechanism by which heat stress impacts yield. Second, there is a broad range of maturity classes and, therefore, thermal-time requirements for development among the cultivars in the NCGA yield contest. Given this broad range, it would be expected that yield contest entry-specific evaluation of growth development stage timing and duration would improve accuracy when determining whether high temperature events coincided with key growth development phases. Finally we were interested in identifying high temperature impacts on yield independent of temperature impacts on phenology. Capturing phenological impacts through climate variable processing allowed us to do this.

The temperature factors or indices examined in our study included ‘killing degree days (KDD), cumulative degree-days ($^{\circ}\text{C d}$) where daily maximum temperature exceeded 29°C (Butler and Huybers 2013), cumulative degree-hours over 30°C (TT30) and 34°C (TT34) (Cicchino *et al* 2010), and an additional index, average night temperature (AvgNT), which was the mean temperature between the hours of 7 pm and 7 am. We also modeled the impact of average maximum daily VPD and cumulative incident solar radiation (RAD) on irrigated maize yields. As irrigated canopy temperature and air temperature may differ, maximum daily canopy temperature was calculated using an empirically derived relationship between air temperature, VPD, and RAD from AmeriFlux data over irrigated maize in Meade, NE (Payero and Irmak 2006). Maximum daily canopy temperature was then used to calculate a ‘canopy’ KDD (Canopy T KDD) (SD Methods, figure S4).

Temperature indices, RAD and VPD were then calculated for each entry-specific thermal-time defined growing season and crop growth stage (EG, Sen, and G) durations. As we calculated all of our climate variables over thermal-time defined intervals, phenological impacts on cumulative intercepted radiation (RAD) were accounted for in our data processing (SD Methods figure S5), allowing us to look for other high temperature impacts on yields.

Statistical analyses

To prevent model scaling issues and allow for comparison of coefficients, RAD, AvgNT, yield, planting rate, planting date (as day of year), and cultivar GDD to maturity were standardized (z -values). Because of the significance of a ‘zero’ value of high temperature threshold indices in the context of this study, KDD, Canopy T KDD, TT30, and TT34 were log-transformed with zeros retained as zeros (McCune *et al* 2002). VPD was not transformed.

Yield and climate data were analyzed using a series of nested linear mixed-effects models (*lme4* package in R) (McCune *et al* 2002). Candidate models (table 1) were designed to test hypotheses about specific mechanisms of maize heat stress response from the literature, while controlling for yield variance due to management, and quantifying remaining inter-farm, regional, inter-annual and genetic yield variance.

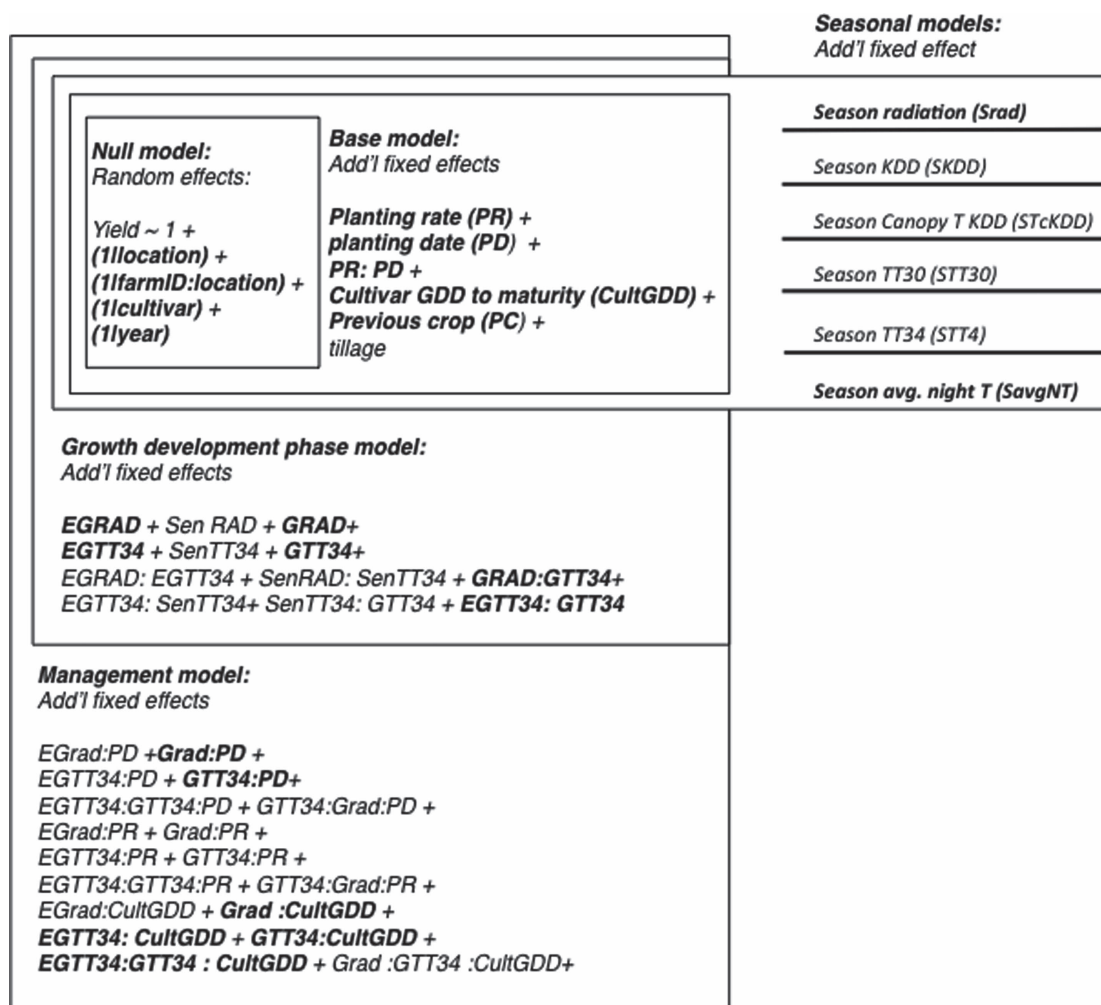
Mixed effects models

Base model

The ‘base’ model (SD Results table S1) contains fixed effects for planting date, planting rate, planting rate crossed with planting date, and cultivar GDD to maturity. All subsequent models contained these terms as well. In addition to management fixed effects, year of entry was also evaluated in the base model as a continuous variable to detect a linear trend in yields, but was found to be insignificant ($p = 0.40$).

Seasonal model

The seasonal models follow from recent statistical/econometric analyzes (Schlenker and Roberts 2009, Lobell *et al* 2013) that determine a seasonal coefficient for yield response to a climate variable (KDD or VPD) that is then used to project climate impacts on maize yields under different future climate scenarios. Yield response to climate over the entire growing season (S) was tested by inputting individual seasonal climate indices into the base model as a fixed effect (resulting in a series of ‘season’ models; one for each individual climate variable) and testing the significance by likelihood ratio testing relative to the ‘base’ (serving as the reduced) model. The Akaike Information Criterion (AIC) was calculated for the base model and each subsequent ‘seasonal’ model. Δi ($\text{AIC}_i - \text{AIC}_{\min}$,

Table 1. Diagram of nesting and structure of linear mixed effects models used in analysis.


*The Null and Base models nest within all other models. The Seasonal models are compared to the base model (likelihood ratio testing) and each other (using AIC). The Crop growth stage model and Management model nest with each other, but not the Seasonal models. Formula symbols follow notation used in the lme4 package in R (Bates *et al* 2014 lme4: linear mixed-effects models using Eigen and S4. ArXiv e-print; submitted to *J. Stat. Soft.*, arXiv: 1406.5823). Fixed effects terms listed in bold were determined to be significant following backwards elimination with likelihood ratio testing (Ramirez-Villegas *et al* 2015).

where the AIC from the radiation model is AIC_{min}) are reported in table 2 (Zuur *et al* 2009).

Crop growth stage model

The crop growth stage model was designed to test for possible high temperature impacts that have been reported for specific growth stages (Schoper *et al* 1987, Dupuis and Dumas 1990, Wilhelm *et al* 1999, Cicchino *et al* 2010, Rattalino *et al* 2011). To do this, yield response to high temperature was analyzed independently during EG, Sen, and G (SD Methods figure S3). In this analysis, we controlled for both increased phenological development associated with high temperature, and soil moisture stress. This was done by calculating all climate variables, including solar radiation, over entry-specific thermal-growth defined EG, Sen, and G and by examining only irrigated yield contest entries.

Since heat stress tolerance, and therefore heat stress response, may represent a genotype by environment ($G \times E$) interaction (Raudenbush and Bryk 2002, Sung *et al* 2003), we introduced terms to test whether exposure to high temperatures during the prior crop growth stage(s) (EG and Sen) modified yield response to high temperature during Sen and/or G.

Management model

The management model was designed to evaluate whether management modified yield response to these specific temperature response mechanisms. Crossed effects between planting rate, planting date, cultivar GDD to maturity, and climate variables calculated by crop growth stage (EG, Sen, and G) were introduced.

The 'null' model (random effects only, table 1) was fit using the restricted maximum likelihood procedure. All random effects were evaluated using likelihood ratio

Table 2. Yield response to seasonal climate indices estimated by the mixed effects model.

Variable	Coefficient			AIC	Δi
	estimate	Std. error	<i>p</i> -value		
'base'	(model without climate indices)			4419	18
KDD	0.077	0.089	0.39	4420	19
Canopy T KDD	-0.027	0.108	0.8	4421	20
TT30	0.031	0.056	0.58	4421	20
TT34	0.002	0.016	0.89	4421	20
AvgNT	-0.121	0.032	2.50×10^{-4}	4407	6
RAD	0.121	0.026	5.40×10^{-6}	4401	0
VPD	0.043	0.075	0.57	4421	20

p-values obtained from likelihood ratio test of the Base model and the Base model containing the Seasonal climate variable. AIC (Akaike Information Criterion) evaluates model fit while giving a penalty for over fitting the model, and Δi ($AIC - AIC_{min}$, where AIC_{min} occurred for seasonal analysis with the RAD model) evaluates model fit by relative distance to an unknown true model. The larger the Δi , the less empirical support for the model, with Δi of 0–2 have 'substantial' empirical support; models with Δi of 4–7 have 'considerably less' support, and models with $\Delta i > 10$ have 'virtually no' support, relative to the model with AIC_{min} , as approximations of reality (Burnham and Anderson 2004).

testing (where a full model was compared to a reduced model which did not contain the variable of interest). All other models were fit using the maximum likelihood procedure, and fixed effects were selected by backwards elimination using likelihood ratio testing (Zuur *et al* 2009). Information on eliminated variables can be found in SD Results (tables S2 and S3). Variance inflation factor (VIF) was tested on each term in each model to prevent errors from multi-collinearity in predictor variables; no VIFs greater than three were observed. All crop growth stage tiered models ('Base', 'Crop growth stage' and 'Management') were compared using AIC values to prevent over-parameterization. The amount of inter-annual and location-based yield variance explained by the inclusion of significant climate variables in the model was evaluated by calculating the percent reduction in the year-level and location-level variance components of the crop growth stage model from those corresponding components in the base model (Raudenbush and Bryk 2002). Fixed-effects level yield variance was calculated used a hybrid of two methods (Raudenbush and Bryk 2002, Nakagawa and Schielzeth 2013). Fixed effects were partitioned into groups based on interaction terms. These groups of fixed effects were inserted into the null model one group at a time, and the fixed effects level variance (Nakagawa and Schielzeth 2013) was determined for each test model.

Results

Seasonal analyzes

Growing season daytime temperature stress indices (KDD, Canopy T KDD, TT30 and TT34) and VPD

were not significantly related to maize yields (table 2). This was not due to unusually low growing season temperatures. The study period included a broad range of seasonal average maximum temperatures and seasonal RAD, as well as significant inter-annual variability in irrigated maize yields (figures 1(a) and (b)). For example, the average KDD in 2012 across all farms was approximately 350, well within the range that has previously been reported to reduce maize yields (Butler and Huybers 2013). As RAD was calculated by entry-specific thermal-time defined intervals, high growing season RAD could either be indicative of a long growing season resulting from below average temperatures (as in 2009), or overall high growing season RAD (as in 2012) (figures 1(a) and (b)).

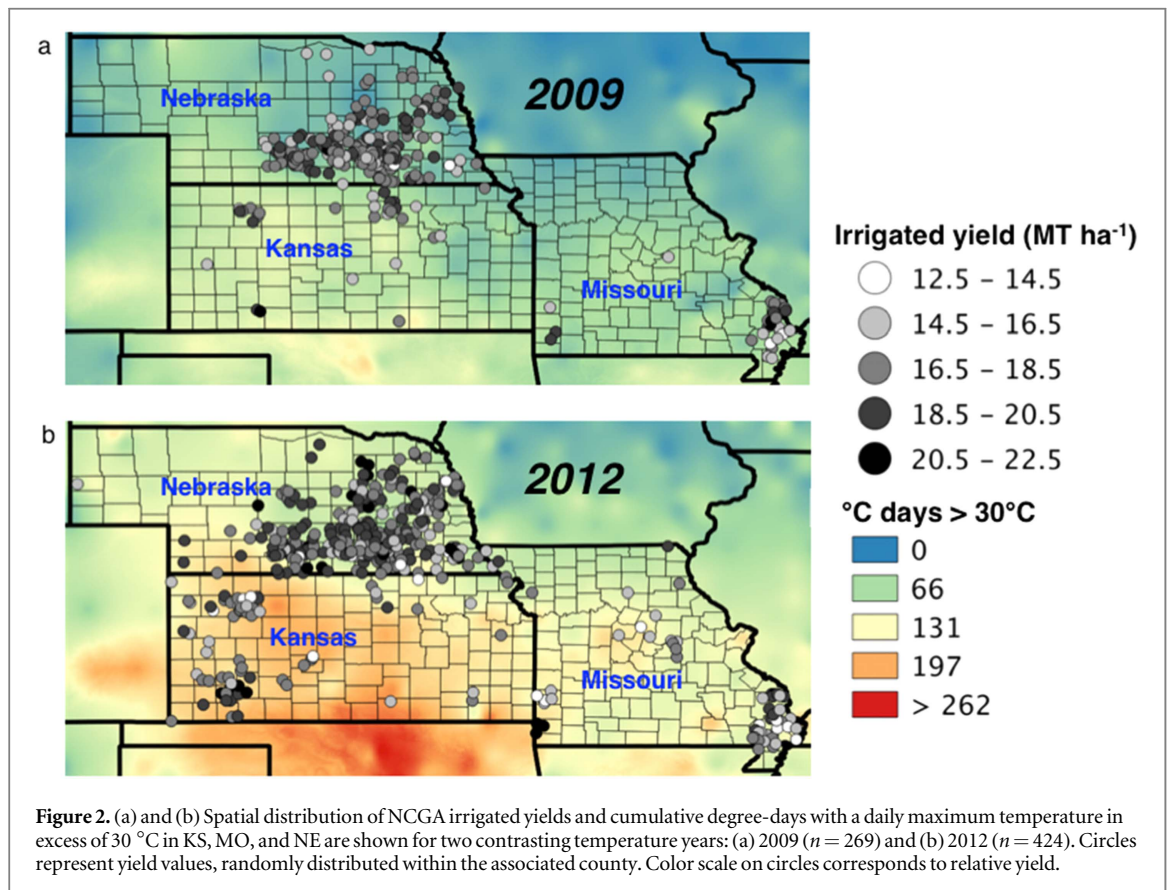
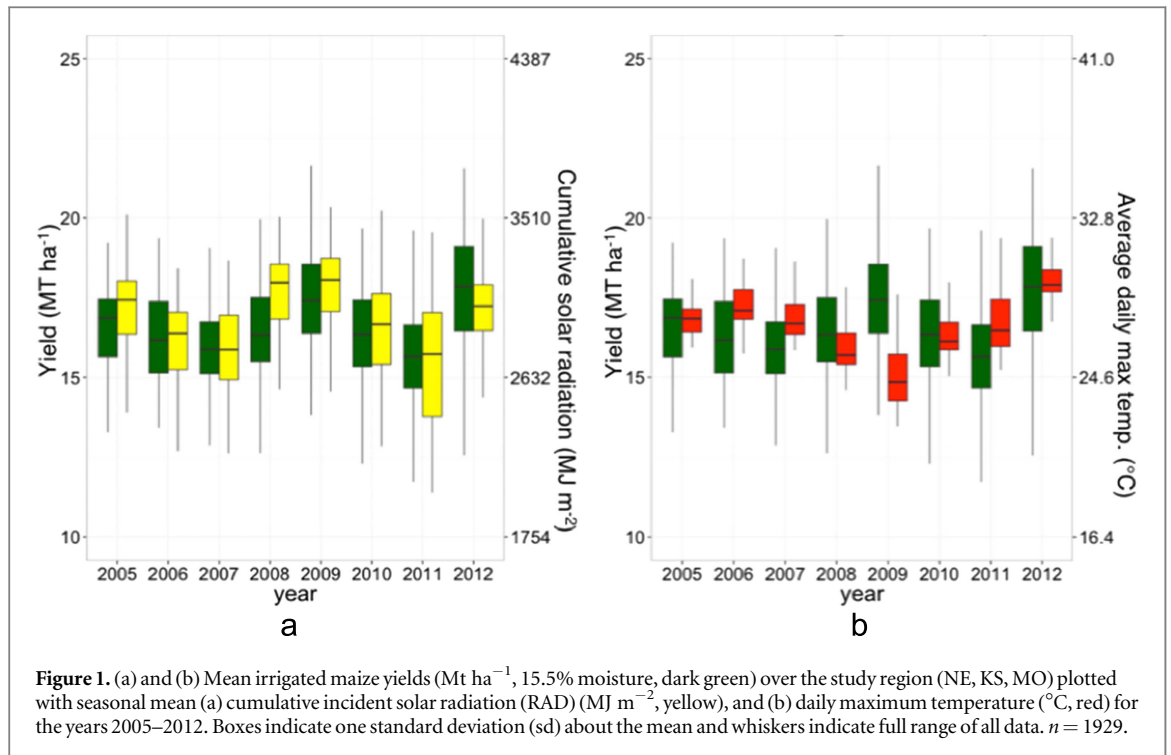
Furthermore, in agreement with recent literature (Butler and Huybers 2013), we found little spatial structure to the yield values even though high temperatures, measured as degree days with a daily maximum temperature in excess of 30 °C, followed a distinct latitudinal gradient (figures 2(a) and (b)).

While growing season daytime temperature indices and VPD were not related to yields, we did find that the coefficients of RAD (*p*-value = 5.4×10^{-6}), and AvgNT (*p*-value = 2.5×10^{-4}) were both significant (table 2). Effect sizes of RAD and AvgNT are approximately equal in magnitude (estimates of 0.12 and -0.12, respectively). Cumulative incident solar radiation and AvgNT are correlated in our data set (*p*-value of a bivariate fit $< 2 \times 10^{-16}$, $R^2 = 0.44$) (figure 3). Because of the GDD model (34 °C/8 °C) we used to calculate the calendar time for crop development over the entire growing season and by individual growth stages, increasing night temperatures > 8 °C were modeled to increase phenological development and, therefore, reduce the calendar time for the season and for each growth stage. Since RAD was calculated as a cumulative value based on the calendar time duration of the entire season and of each growth stage as determined by the calculated thermal-time, higher night temperatures were associated with reduced RAD over the growing season (figure 3).

AvgNT did not significantly modify yield response to calculated RAD (*p*-value = 0.78), and the yield impact of AvgNT becomes statistically insignificant if RAD is accounted for in the model (*p*-value = 0.18). This suggests that the impact of night temperature on yield is primarily associated with increased development rates and, consequently, reduced RAD. The model with RAD had the most empirical support, as indicated by the lowest AIC (table 2).

Crop growth stage analyzes

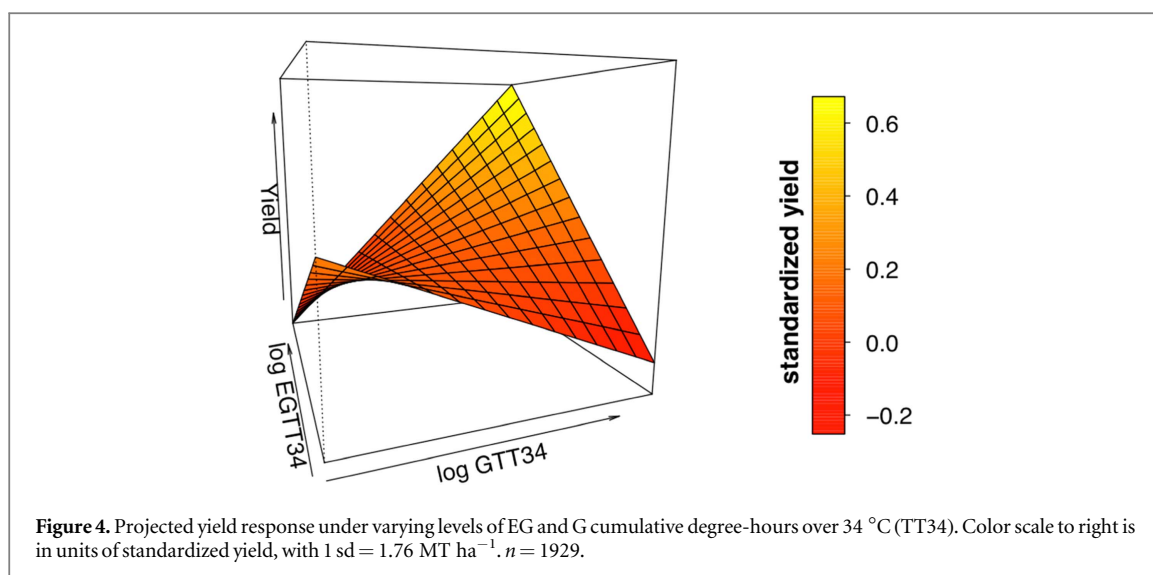
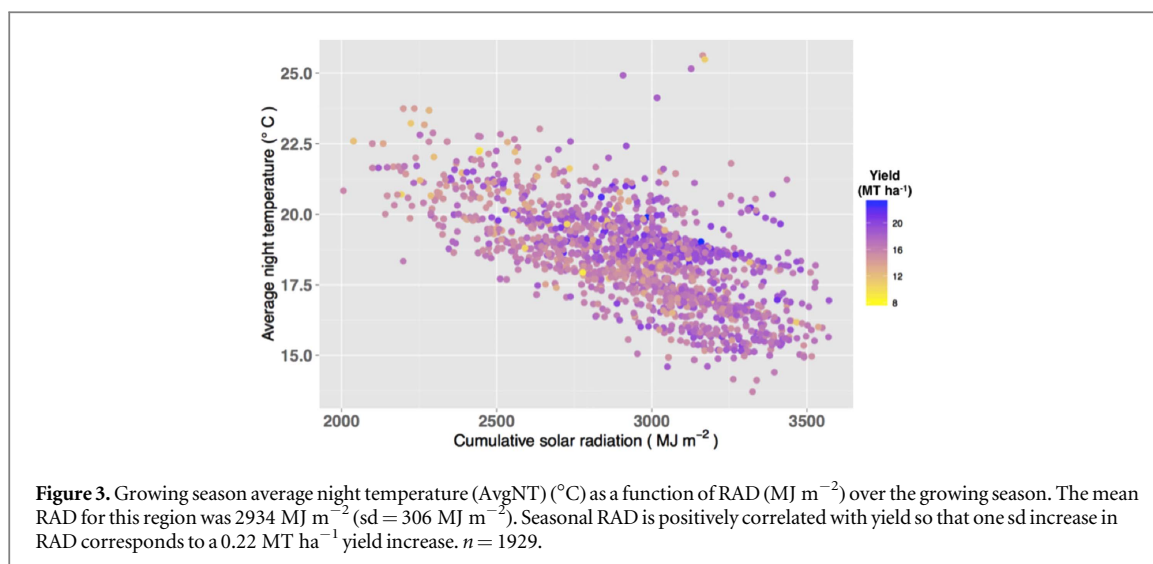
Yields were also compared to temperature stress indices by crop growth stage (EG, Sen, and G). Coefficients for KDD, Canopy T KDD and TT30 were not significant for any of the three crop growth stages



($\alpha = 0.05$), including during Sen when many physiological processes contributing to yield formation in maize are active.

We then examined RAD and TT34 for each of the three crop growth stages, as well as interactions among

EG, Sen, and G TT34 (SD Results figure S6, table S2). We found that TT34 does significantly interact with yield, but that yield response to TT34 is complex. High temperatures during G slightly but significantly reduce yield gains that would be expected from increased



RAD during G (p -value = 0.008), but yield response to G TT34 was modified by EG temperature regime, as indicated by a significant crossed effect between EG and G TT34 (SD Results figure S6, table S2). When high values of TT34 occurred as isolated events during either EG or during G, yield is slightly but significantly reduced. However, yield response was both significant (p -value = 4.7×10^{-4}) and positive when both EG and G TT34 are high (figure 4).

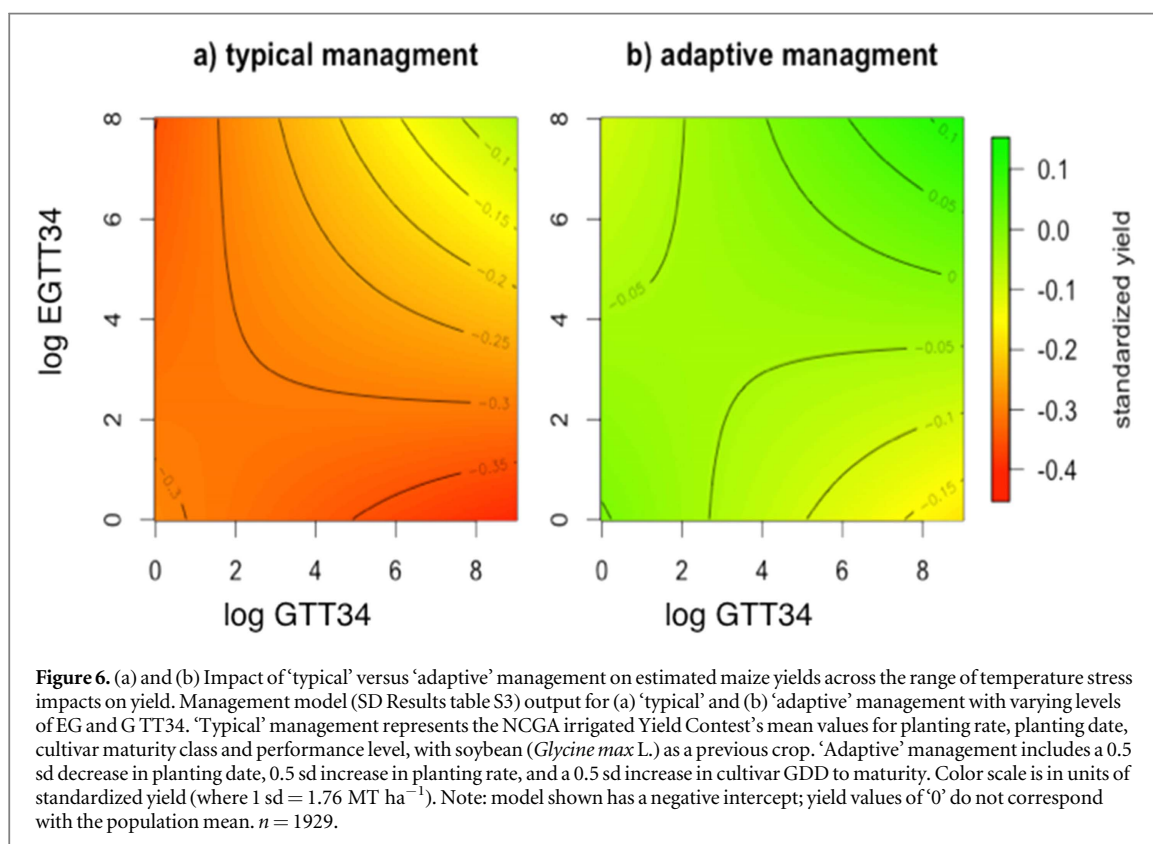
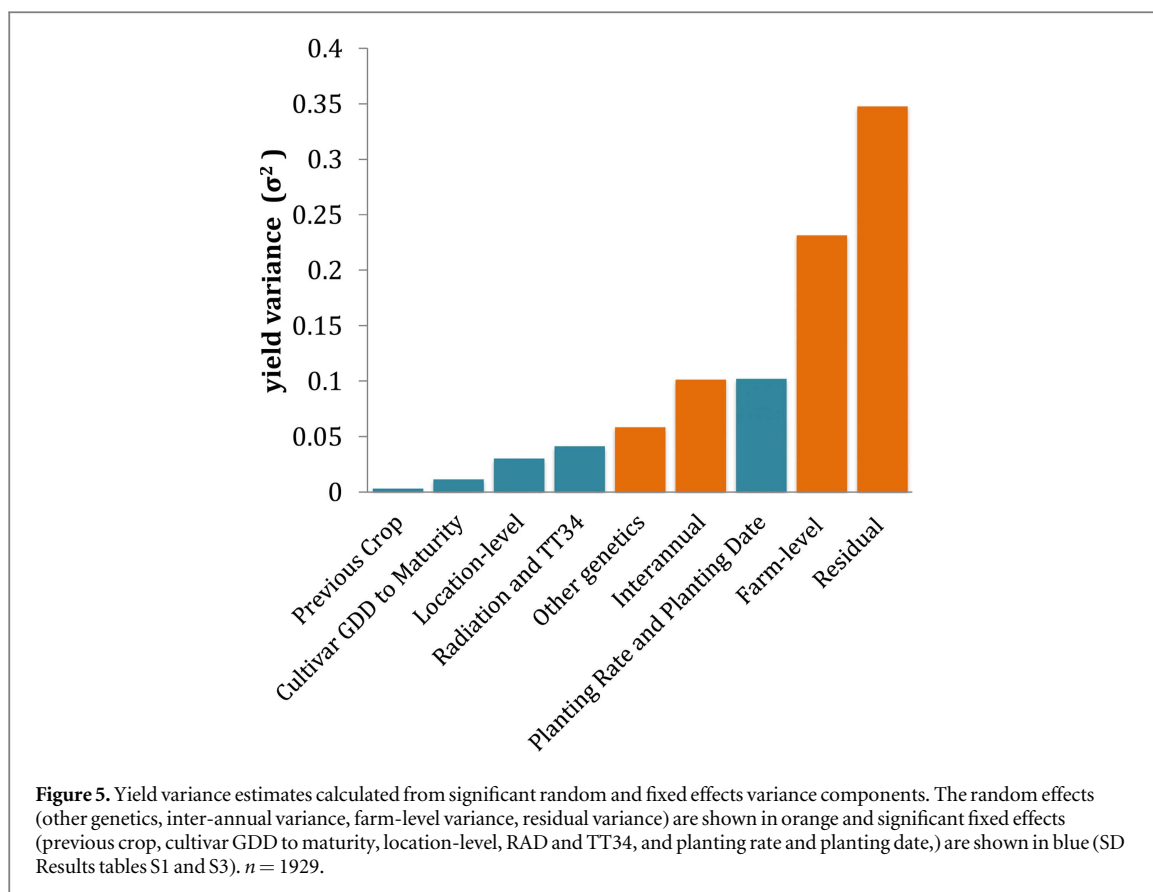
Yield variance components

To better understand the factors controlling yield variability in irrigated maize, we examined the amount of yield variance explained by climate and management (figure 5). All significant climate interactions explained only a small amount of yield variance (less than 6% of residual variance; SD Results table S4), especially relative to yield variance explained by significant crop management parameters (Cultivar GDD to Maturity, Planting Rate and Planting Date; figure 5; SD Results table S4). Selection of longer

season cultivars was associated with more positive response to high temperatures both in EG and G. While earlier planting dates were associated with increased temperature sensitivity during G (perhaps because of an association between earlier planting and cooler conditions in EG), yield gains associated with earlier planting were often sufficient to offset any yield losses from high temperatures, especially if coupled with a higher planting rate.

Adaptation to higher growing season temperatures

We were able to estimate the potential benefits of farmer adaptations relative to the estimated climate impact on irrigated maize yields by comparing 'typical' management versus 'adaptive' management values (figures 6(a) and (b)). 'Typical' management includes the mean planting date, the mean planting rate, and an average-performing cultivar of the median maturity class (figure 6(a)). 'Adaptive' management considers a cultivar of an above-average maturity class (0.5 standard deviations longer than the mean), an earlier



than average planting date (0.5 standard deviations earlier than the mean), and an above-average planting rate (0.5 standard deviations above the mean)

(figure 6(b)). With these slight changes in management parameters that are associated with ‘adaptive’ management, our model projects yields that are higher at all

temperatures compared to ‘typical’ management (figures 6(a) and (b)). The highest yields for ‘adaptive’ management are seen during years with high EG and G TT34. This suggests that, even in the highest yielding systems, small, agronomically plausible changes in current cultural practices in the US Corn Belt may be sufficient to offset yield declines in irrigated maize projected from increased air temperatures alone.

Discussion

While recent research has indicated that projected declines in maize yields due to high temperatures (Schlenker and Roberts 2009, Lobell *et al* 2013, Deryng *et al* 2014) are also likely linked with moisture stress (Roberts *et al* 2012, Lobell *et al* 2013, Lobell *et al* 2014), few studies have separated the effects of temperature and moisture stress. In this study, we analyzed irrigated maize in order to control for moisture stress and isolate the effects of temperature on yields. Our analyses indicate that irrigated maize production appears to be more limited by management and RAD than by high temperature. No significant irrigated yield response was observed to high temperature stress indices calculated over the entire growing season for a broad range of seasonal temperatures experienced in the US Corn Belt. This was not due to unusually low temperatures—record or near record seasonal average temperatures were reported in 2012 in many locations in the study area (State of the Climate (NOAA) 2012).

There were statistically significant yield responses to temperature stress indices when examined by crop growth stage. However, these were very weak and, if temperatures were consistently high throughout the growing season, positive. Grain-fill (G) appears to be the most sensitive crop growth stage for high temperature impacts on irrigated maize yields, where high temperatures appear to only slightly offset yield increases from increased RAD. But a direct negative impact of high temperatures during G is only evident if temperatures were low during EG. In contrast, there was a positive yield response to temperature when the crop experienced above-average temperatures in both EG and during G. This finding is consistent with reported acclimation to high temperature in maize (Crafts-Brandner and Salvucci 2002, Sinsawat *et al* 2004, Butler and Huybers 2013), and appears to be a trait that is conserved across maize cultivars (results not shown). A model including the high-temperature acclimation response explains about 30% of the spatial variability in the yield contest data (SD Results table S4), suggesting that it may be a component of previously identified spatial acclimation to high temperature stress (Butler and Huybers 2013). Acclimation to heat stress, or acquired thermo-tolerance, in maize cropping systems may be an important consideration for predicting yield response to shifting temperature regimes.

Although many previous studies have focused on temperature impacts during reproduction, high temperatures occurring during the reproduction growth stage (Sen) were not significantly related to yields. This lack of response in the current population of maize cultivars we examined is consistent with findings of similar studies on irrigated maize (Rattalino Edreira *et al* 2011, Lobell *et al* 2013), and may be due to breeding advances that have resulted in increased stress tolerance in maize (Duvick 2005).

High night temperatures were associated with decreased yields. Since we modeled the duration of the crop growth stages using thermal-time, increased night temperatures led to decreased RAD per unit thermal-time. Decreased RAD as a result of accelerated development rates has been implicated as the cause of yield declines associated with elevated night temperature (Cantarero *et al* 1999, Hatfield *et al* 2014) and is the basis for shifting to longer season maturity classes both on-farm (Kaiser *et al* 1993) and in studies projecting the impact of farmer adaptations to climate change on maize yields (Chang 1981, Kaiser *et al* 1993, Tao and Zhang 2010, Moore and Lobell 2014). Other mechanisms for yield decline associated with high temperatures in the literature include increased rates of night respiration, but our data did not show evidence for a mechanism of night temperature-related yield decline other than accelerated phenological development, as the impact of night temperature became insignificant when radiation was accounted for in the model.

We also see evidence of adaptation to observed temperature impacts—both in maize management and in maize genetics—that are associated with yield responses of sufficient magnitude to offset any climate-related yield losses observed in our dataset (figures 6(a) and (b); SD Results table S3). Of particular interest are adjustments of planting dates and planting rates (Kucharik 2008, Smith *et al* 2014), continued breeding for stress tolerance during the reproduction growth stage (Sen) (Duvick 2005) and the possibility of shifting to longer season cultivars in response to projected climate change (Kucharik 2008, Grassini *et al* 2011).

The lack of strong, negative response in irrigated maize yields to temperature despite record or near-record high air temperatures experienced in the study region in 2012 suggests that recently proposed heat stress thresholds (calculated from air temperature Cicchino *et al* 2010, Lobell *et al* 2011, Roberts *et al* 2012) are too low. Lack of temperature and VPD sensitivity in irrigated maize suggests that previously identified temperature/yield relationships in non-irrigated maize may have been the result of interactions between these variables and low soil moisture in a given climate system. As maize yield response to temperature is dynamic and highly leveraged by soil moisture status, additional experimental studies combined with carefully parameterized crop process models for

separate and combined impacts of temperature and moisture stress may be necessary to accurately project yield trends and evaluate mitigation strategies under shifting temperature regimes.

Conclusion

Cumulative incident solar radiation had the greatest impact on irrigated maize yields in the western US Corn Belt for the study period (2005–2012). High daytime temperatures had a minimal negative impact on irrigated maize yields despite record or near-record high growing season temperatures in 2012. High night-time temperatures did negatively impact irrigated maize yields. However, our analysis suggests that this was due to increased crop development rates and, therefore, reduced RAD.

We found evidence of acquired thermo-tolerance in irrigated maize—high daytime temperatures early in the growing season followed by high daytime temperatures during grain-fill positively impact irrigated maize yields. This finding is consistent with reports of acquired thermo-tolerance in maize and takes on particular significance for projections of maize yield responses to climate change. These findings also suggest that current thresholds for heat stress in maize may be too low. We assessed high temperature stress indices that have been reported to negatively impact maize yields. However, these were not associated with decreased irrigated maize yields in the study region from 2005 to 2012.

Our results suggest that, for irrigated maize cropping systems, the combination of maize crop management (planting rate, planting rate) and appropriate maize genetics (e.g., selection of longer-season maize cultivars) can offset any climate-related yield losses observed in our dataset.

Acknowledgments

This research received financial support from the State University of New York Diversity Fellowship, the section of Soil and Crop Sciences in the School of Integrative Plant Sciences, Cornell University, and the United States Department of Agriculture National Institute for Food and Agriculture Hatch Program/Project number: NYC-124400. The authors also wish to thank Erika Mudrak and other staff at the Cornell Statistical Consulting Unit for assistance with analytical design; Dr Peter Woodbury for assistance in the analyzes, the National Corn Growers Association (<http://www.ncga.com>) for providing the maize data, and the High Plains Regional Climate Center and the University of Missouri for providing the climate data.

References

- Bonhomme R, Derieux M and Edmeades G O 1994 Flowering of diverse maize cultivars in relation to temperature and photoperiod in multilocation field trials *Crop Sci.* **34** 156–64
- Burnham K P and Anderson D R 2004 Multimodel inference understanding AIC and BIC in model selection *Socio. Methods Res.* **33** 261–304
- Butler E E and Huybers P 2013 Adaptation of US maize to temperature variations *Nat. Clim. Change* **3** 68–72
- Cantarero M G, Cirilo A G and Andrade F H 1999 Night temperature at silking affects kernel set in maize *Crop Sci.* **39** 703–10
- Challinor A J, Watson J, Lobell D B, Howden S M, Smith D R and Chhetri N 2014 A meta-analysis of crop yield under climate change and adaptation *Nat. Clim. Change Lett.* **4** 287–91
- Chang J-H 1981 Corn yield in relation to photoperiod, night temperature, and solar radiation *Agric. Meteorol.* **24** 253–62
- Cicchino M, Rattalino E J I and Otegui M E 2010 Heat stress in field-grown maize: response of physiological determinants of grain yield *Crop Sci.* **50** 1438–48
- Crafts-Brandner S J and Salvucci M E 2002 Sensitivity of photosynthesis in a C₄ plant, maize, to heat stress *Plant Physiol.* **129** 1773–80
- Deryng D, Conway D, Ramanjuttu N, Price J and Warren R 2014 Global crop yield response to extreme heat stress under multiple climate change futures *Environ. Res. Lett.* **9** 1–13
- Duncan W G and Hesketh J D 1968 Net photosynthetic rates, relative leaf growth rates, and leaf numbers of 22 races of maize grown at eight temperatures *Crop Sci.* **8** 670–4
- Dupuis I and Dumas C 1990 Influence of temperature stress on *in vitro* fertilization and heat shock protein synthesis in maize (*Zea mays* L.) reproductive tissues *Plant Physiol.* **94** 665–70
- Duvick D N 2005 The contribution of breeding to yield advances in maize (*Zea Mays* L.) *Adv. Agronomy* **86** 83–145
- Grassini P, Thorburn J, Burr C and Cassman K G 2011 High-yield irrigated maize in the Western US corn belt: I. On-farm yield, yield potential, and impact of agronomic practices *Field Crops Res.* **120** 142–50
- Hatfield J, Takle G, Grotjahn R, Holden, Izaurre R C, Mader T, Marshall E and Liverman D 2014 Agriculture *Climate Change Impacts in the United States: The Third National Climate Assessment* ed J M Melillo *et al* (Washington, DC: U.S. Global Change Research Program) ch 6, pp 150–74
- IPCC 2014 *Climate Change 2014: Impacts, Adaptation, and Vulnerability. Part A: Global and Sectoral Aspects. Contribution of Working Group II to the Fifth Assessment Report of the Intergovernmental Panel on Climate Change* ed C B Field *et al* (London and New York: Cambridge University Press) pp 1132
- Kaiser H M, Riha S J, Wilks D S, Rossiter D G and Sampath R 1993 A farm-level analysis of economic and agronomic impacts of gradual climate warming *Am. J. Agric. Econ.* **75** 387–98
- Kucharik C J 2008 Contribution of planting date trends to increased maize yields in the Central United States *Agronomy J.* **100** 328–36
- Lobell D B, Bänziger M, Magorokosho C and Vivek B 2011 Nonlinear heat effects on African maize as evidenced by historical yield trials *Nat. Clim. Change* **1** 42–5
- Lobell D B, Hammer G L, McLean G, Messina C, Roberts M J and Schlenker W 2013 The critical role of extreme heat for maize production in the United States *Nat. Clim. Change* **3** 497–501
- Lobell D B, Roberts M J, Schlenker W, Braun N, Little B B, Rejesus R M and Hammer G L 2014 Greater sensitivity to drought accompanies maize yield increase in the US Midwest *Science* **344** 516–9
- McCune B, Grace J B and Urban D L 2002 *Analysis of Ecological Communities* (Glenden Beach, OR: MjM Software Design) p 304
- Moore F C and Lobell D B 2014 Adaptation potential of European agriculture in response to climate change *Nat. Clim. Change Lett.* **4** 610–4

- Msangi S and Rosegrant M W 2011 Feeding the future's changing diets: implications for agriculture markets, nutrition, and policy *Reshaping Agriculture for Nutrition and Health* ed S Fan and R Pandya-Lorch (Washington, DC: International Food Policy Research Institute) pp 65–71
- Nakagawa S and Schielzeth H 2013 A general and simple method for obtaining R² from generalized linear mixed-effects models *Methods Ecol. Evol.* **4** 133–42
- Payero J O and Irmak S 2006 Variable upper and lower crop water stress index baselines for corn and soybean *Irrigation Sci.* **25** 21–32
- Ramirez-Villegas J, Koehler A K and Challinor A J 2015 Assessing uncertainty and complexity in regional-scale crop model simulations *Eur. J. Agronomy* in press (doi:10.1016/j.eja.2015.11.021)
- Rattalino E J I, Budakli Carpici E, Sammarro D and Otegui M E 2011 Heat stress effects around flowering on kernel set of temperate and tropical maize hybrids *Field Crops Res.* **123** 62–73
- Raudenbush S W and Bryk A S 2002 Hierarchical linear models: applications and data analysis methods *Advanced Quantitative Techniques in the Social Sciences Series* 2nd edn (Thousand Oaks, CA: Sage) p 512
- Roberts M J, Schlenker W and Eyer J 2012 Agronomic weather measures in econometric models of crop yield with implications for climate change *Am. J. Agric. Econ.* **95** 236–43
- Sanchez B A, Rasmussen A and Porter J R 2014 Temperatures and the growth and development of maize and rice: a review *Glob. Change Biol.* **20** 408–17
- Schlenker W and Roberts M J 2009 Nonlinear temperature effects indicate severe damages to US crop yields under climate change *Proc. Natl Acad. Sci. USA* **106** 15594–8
- Schooper J B, Lambert R J, Vasilas B L and Westgate M E 1987 Plant factors controlling seed set in maize: the influence of silk, pollen, and ear-leaf water status and tassel heat treatment at pollination *Plant Physiol.* **83** 121–5
- Shaw S B, Mehta D and Riha S J 2014 Using simple data experiments to explore the influence of non-temperature controls on maize yields in the mid-West and Great Plains *Clim. Change* **122** 747–55
- Sinsawat V, Leipner J, Stamp P and Fracheboud Y 2004 Effect of heat stress on the photosynthetic apparatus in maize (*Zea Mays* L.) grown at control or high temperature *Environ. Exp. Bot.* **52** 123–9
- Smith S, Cooper M, Gogerty J, Löffler C, Borcherding D and Wright K 2014 Yield gains in major US field crops *Crop Science Society Special Publication 33* (Madison, WI: ASA, CSSA, and SSSA) p 488
- State of the Climate: National Overview for Annual 2012 (<http://ncdc.noaa.gov/sotc/national/201213>) NOAA National Centers for Environmental Information
- Sung D Y, Kaplan F, Lee K J and Guy C L 2003 Acquired tolerance to temperature extremes *Trends Plant Sci.* **8** 179–87
- Tao F and Zhang Z 2010 Adaptation of maize production to climate change in North China Plain: quantify the relative contributions of adaptation options *Eur. J. Agronomy* **33** 103–16
- Trenberth K E, Dai A, van der Schrier G, Jones P D, Barichivich J, Briffa K R and Sheffield J 2014 Global warming and changes in drought *Nat. Clim. Change* **4** 17–22
- Wilhelm E P, Mullen R E, Keeling P L and Singletary G W 1999 Heat stress during grain filling in maize: effects on kernel growth and metabolism *Crop Sci.* **39** 1733–41
- Williams I N, Torn M S, Riley W J and Wehner M F 2014 Impacts of climate extremes on gross primary production under global warming *Environ. Res. Lett.* **9** 1–10
- Winstanley D and Changnon S A 1999 Long-term variations in seasonal, weather conditions important to water resources in Illinois *J. Am. Water Resour. Assoc.* **35** 1421–7
- Zuur A, Ieno E N, Walker N, Saveliev A A and Smith G M 2009 *Mixed Effects Models and Extensions in Ecology with R* (New York: Springer) p 574