

The 2015 Borneo fires: What have we learned from the 1997 and 2006 El Niños?

This content has been downloaded from IOPscience. Please scroll down to see the full text.

2016 Environ. Res. Lett. 11 104003

(<http://iopscience.iop.org/1748-9326/11/10/104003>)

View [the table of contents for this issue](#), or go to the [journal homepage](#) for more

Download details:

IP Address: 210.77.64.105

This content was downloaded on 11/04/2017 at 02:19

Please note that [terms and conditions apply](#).

You may also be interested in:

[Increasing potential of biomass burning over Sumatra, Indonesia induced by anthropogenic tropical warming](#)

R Kartika Lestari, Masahiro Watanabe, Yukiko Imada et al.

[Teleconnections associated with the intensification of the Australian monsoon during El Niño Modoki events](#)

A S Taschetto, R J Haarsma, A Sen Gupta et al.

[How much global burned area can be forecast on seasonal time scales using sea surface temperatures?](#)

Yang Chen, Douglas C Morton, Niels Andela et al.

[Mapping the locations of asymmetric and symmetric discharge responses in global rivers to the two types of El Niño](#)

Yu-Chiao Liang, Chin-Chieh Chou, Jin-Yi Yu et al.

[Variability of fire emissions on interannual to multi-decadal timescales in two Earth System models](#)

D S Ward, E Shevliakova, S Malyshev et al.

[El Niño's impact on California precipitation: seasonality, regionality, and El Niño intensity](#)

Bor-Ting Jong, Mingfang Ting and Richard Seager

[A dipole pattern in the Indian and Pacific oceans and its relationship with the East Asian summer monsoon](#)

Jiayu Zheng, Jianping Li and Juan Feng

[Regional air quality impacts of future fire emissions in Sumatra and Kalimantan](#)

Miriam E Marlier, Ruth S DeFries, Patrick S Kim et al.



LETTER

The 2015 Borneo fires: What have we learned from the 1997 and 2006 El Niños?

OPEN ACCESS

RECEIVED

10 April 2016

REVISED

1 August 2016

ACCEPTED FOR PUBLICATION

13 September 2016

PUBLISHED

3 October 2016

Original content from this work may be used under the terms of the [Creative Commons Attribution 3.0 licence](#).

Any further distribution of this work must maintain attribution to the author(s) and the title of the work, journal citation and DOI.

Chu-Chun Chen¹, Hsiao-Wen Lin¹, Jin-Yi Yu² and Min-Hui Lo¹¹ Department of Atmospheric Sciences, National Taiwan University, Taipei, Taiwan² Department of Earth System Science, University of California, Irvine, USAE-mail: minhuilo@ntu.edu.tw**Keywords:** fire, Eastern Pacific (EP) El Niño, Central Pacific (CP) El NiñoSupplementary material for this article is available [online](#)**Abstract**

Fire activity in Indonesia is strongly linked with El Niño events, whose sea surface temperature (SST) patterns can weaken the Walker circulation to induce drought conditions in the region. Here we show via case analyses and idealized climate model simulations that it is the central location of the SST anomalies associated with El Niño, rather than its strength, that is mostly linked with the fire occurrence. During our study period of 1997–2015, Eastern Pacific (EP) El Niño events produced the largest fire events in southern Borneo (i.e., in 1997, 2006, and 2015), while Central Pacific (CP) El Niño events consistently produced minor fire events. The EP El Niño is found to be more capable than the CP El Niño of weakening the Walker circulation that acts to prolong Borneo's drought condition from September to October. The extended dry conditions in October potentially increase the occurrence of fires during EP El Niño years. The 2015 fire event owes its occurrence to the location of the 2015 El Niño but not necessarily its 'Godzilla' strength in affecting the fire episodes over southern Borneo. Projecting the location of El Niño events might be more important than projecting their strength for fire management in southern Borneo.

1. Introduction

Fire in Indonesia is known to be strongly linked with El Niño events (Field and Shen 2008, van der Werf *et al* 2008, Field *et al* 2009, Reid *et al* 2012), and has critical impacts on the global carbon budget, tropical biodiversity, ecosystem health, global energy supplies, as well as air quality and human health (Sodhi *et al* 2004, Danielsen *et al* 2009, van der Werf *et al* 2010, Marlier 2012). The year of 2015, the fire situation in this region is exceptionally severe (Voiland 2015). In fact, 2015 has become the largest fire year since 1997 (van der Werf 2015) and surpasses the second largest year (2006). Often, fires are set for agricultural purposes, legally or illegally, during the dry season in Indonesia (Hendon 2003). In remote areas, there is little means to contain the burning except to wait for the onset of the wet season (Page *et al* 2002). During drought years, fire can evade this control and burn a substantial acreage beyond what was intended of, as in

the 2015 fire episode in Indonesian Sumatra and southern Borneo.

Drought events in Indonesia are strongly associated with El Niño events that occur roughly every 2 to 7 years. Coupling of large fire events and El Niño events is well known and greatly acknowledged (van der Werf *et al* 2008, 2010). Studies across various tropical and subtropical regions have proved that fire forecast relies at least partially on seasonal El Niño forecasts (Chen *et al* 2011, Wooster *et al* 2012). El Niño characteristics vary from event to event and successive El Niño events are not identical (Capotondi and Sardeshmukh 2015). The interannual variability of fire activity is related to the details of the sea surface temperature (SST) patterns associated with the El Niño events (Reid *et al* 2012). From the prospect of pre-warning and effective fire management in the region that has a global impact, it is crucial to be able to identify the key features of the El Niño SST pattern that matter to the magnitude of fire

activity and to understand the physical linkages between them.

Here we use a number of datasets to demonstrate a mechanism through which the El Niño type, characterized by the central location of the associated SST pattern, can impact the magnitude of fire season in Indonesia. The datasets used are: National Oceanic and Atmospheric Administration (NOAA)'s Precipitation Reconstruction over Land (PREC/L) (Chen *et al* 2002), Advanced Along Track Scanning Radiometer ([A]ATSR) fire thermal anomaly detections from the European Space Agency (ESA) (Arino *et al* 2012), Monthly velocity potential (VP) from the National Centers for Environmental Prediction/National Center for Atmospheric Research (NCEP/NCAR) reanalysis dataset (Kalnay *et al* 1996), and Extended Reconstructed Sea Surface Temperature (ERSST) dataset from the International Comprehensive Ocean–Atmosphere Dataset (ICOADS) (Huang *et al* 2015, Liu *et al* 2015).

2. Methods and datasets

2.1. Precipitation

Our rainfall data are from NOAA's PREC/L (Chen *et al* 2002). The product reports monthly average rainfall over land reconstructed from global gauge station observations. In a parallel analysis, we used a TRMM dataset (TMPA 3B43) (Liu *et al* 2012) for comparison.

2.2. Fire activity in Borneo

The ESA [A]ATSR on board various ESA satellites reported (globally) nighttime surface thermal anomalies in the $3.7\ \mu\text{m}$ mid-infrared channel from 1995 to 2012 (Arino *et al* 2012). We used the ATSR World Fire Atlas (WFA) Algorithm 1 as our primary analysis dataset. We rebinned monthly latitude–longitude records from ATSR to a $0.5^\circ \times 0.5^\circ$ resolution raster file for comparison with the precipitation data. Fire generally shows a strong diurnal cycle (Giglio 2007). Therefore, we performed a parallel analysis using MODIS Terra products (MOD14CMH) (Giglio *et al* 2006) with an overpass time in the late morning. The result from MODIS Terra is similar to that from ATSR products, except for a difference in scales for fire pixel count that is expected (supplementary figure 2).

2.3. Velocity potential

Monthly VP data were obtained from the NCEP/NCAR reanalysis dataset (Kalnay *et al* 1996). The reanalysis product is available as monthly means with T62 horizontal resolution. We analyzed the temporal evolution and spatial distribution of the VP on the 0.2582 sigma level (approximately 250 hPa) over the equatorial Pacific and the Maritime Continent.

2.4. Sea surface temperature

We examined variations of SST using the ERSST dataset version 4 derived from the ICOADS (Huang *et al* 2015, Liu *et al* 2015). The product contains monthly mean SSTs with a spatial resolution of $2^\circ \times 2^\circ$. As in the analysis performed on the VP, we analyzed the temporal evolution and spatial distribution of SST over the equatorial Pacific.

2.5. Bootstrap method

We calculated confidence intervals for precipitation mean based on 1000 bootstrap replicates (Mooney and Duval 1993). The bootstrap replicate is derived by calculating the mean of the bootstrap sample. For each bootstrap sample, we randomly draw with replacement items from actual years and keep the number of randomly selected years equal to the number of actual years. By repeating this process 1000 times, we could obtain 1000 bootstrap replicates, and then the 99% confidence intervals, for example, is derived by taking the 5th and 995th largest of the 1000 replicates.

2.6. Model simulations

We conducted ensemble experiments for the Eastern Pacific (EP) and Central Pacific (CP) El Niño episodes using NCAR Community Atmosphere Model (CAM4) with a T42 Euler spectral resolution. Each ensemble experiment consists of 10 members, and each member is forced with 22 month long SSTs associated with EP/CP El Niño (including El Niño developing phase, peak phase, and decaying phase). These SSTs (following Yu *et al* 2012) are made by adding together climatological SSTs and the typical SST anomalies of the EP or CP El Niño. The typical SST anomalies are constructed by a regression between tropical Pacific SST anomalies and EP/CP El Niño indices and then scaling them to typical El Niño intensities (Yu *et al* 2012).

3. Results

We searched for fire hotspot detections during the period 1997–2015 in southern Borneo (109°E – 118°E , 4.5°S – 1°S), roughly Central and South Kalimantan in Indonesia (figure 1(a)), because fire activity in this region is the most variable annually and represents approximately 60% of the fire hotspots in Borneo from 1997 to 2012. Forest and peatland are widely burned to clear land for oil palm plantation in southern Borneo during the dry season, releasing large amounts of greenhouse gases into the atmosphere (van der Werf *et al* 2010, Page *et al* 2011). The regular dry season in southern Borneo generally lasts from June to September, during which the average rainfall drops 36% – $160\ \text{mm month}^{-1}$. Typically, rains return in October and quickly reach $220\ \text{mm month}^{-1}$ by the onset of the wet season in November (figure 1(b)).

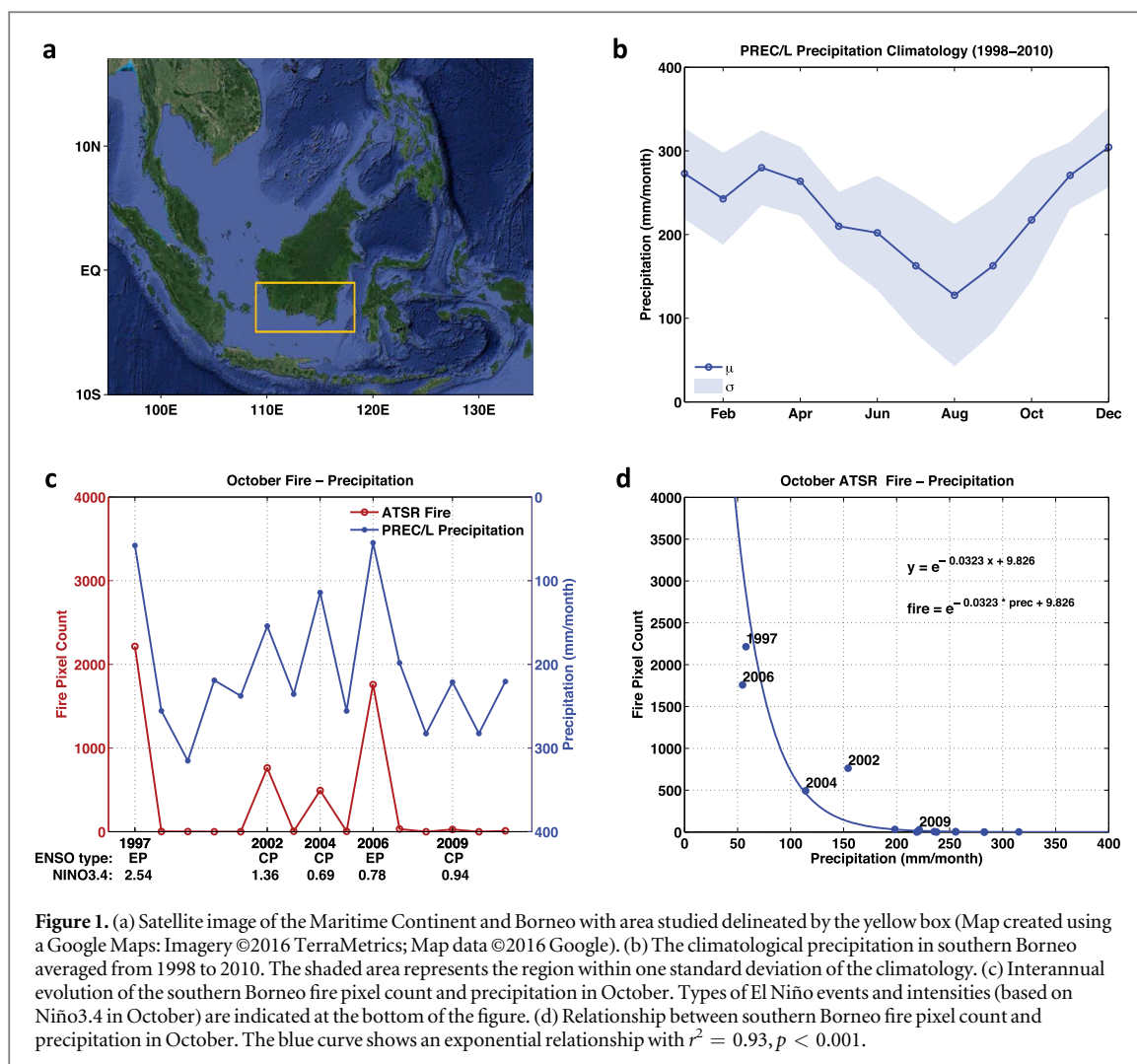
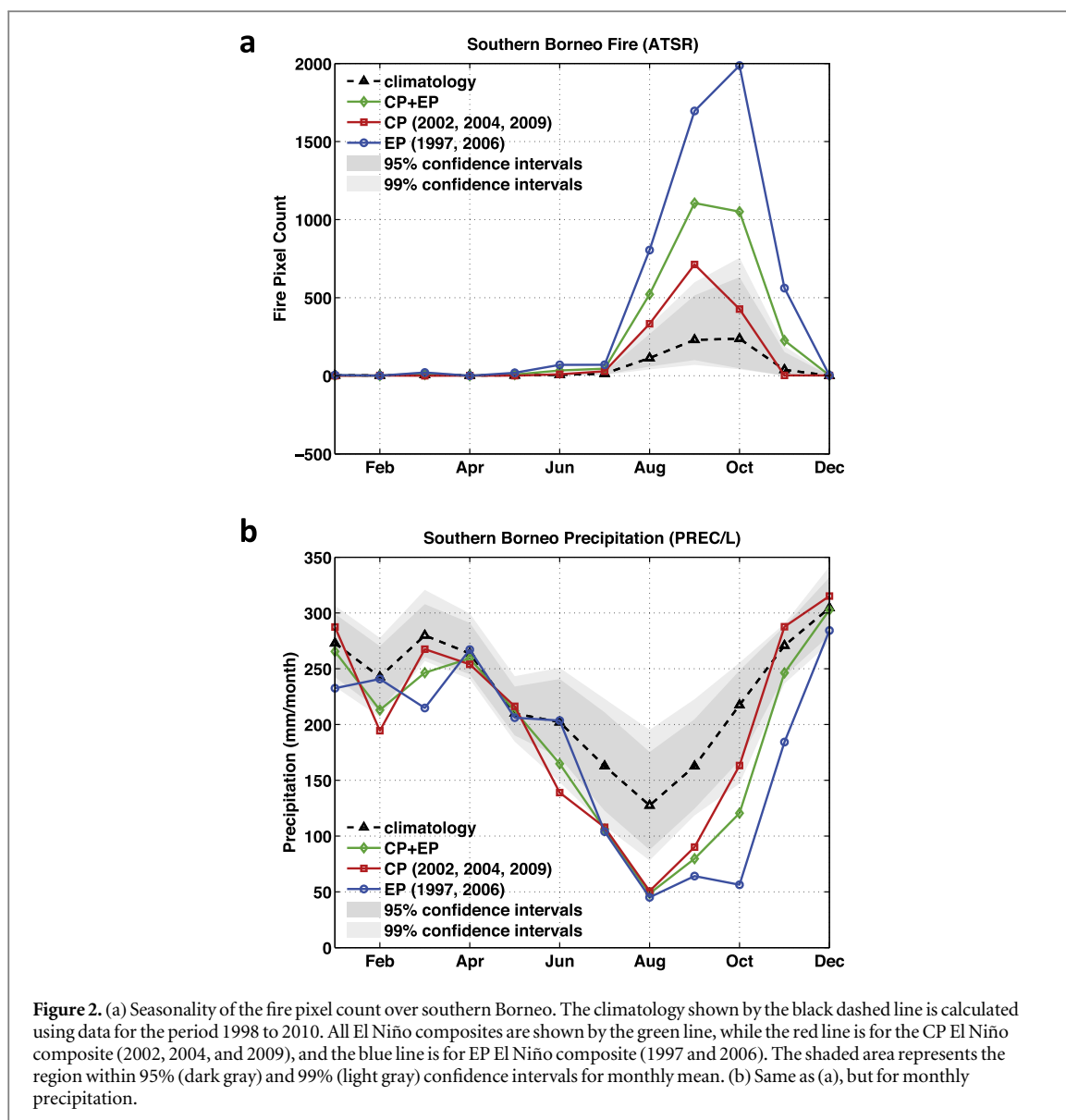


Figure 1. (a) Satellite image of the Maritime Continent and Borneo with area studied delineated by the yellow box (Map created using a Google Maps: Imagery ©2016 TerraMetrics; Map data ©2016 Google). (b) The climatological precipitation in southern Borneo averaged from 1998 to 2010. The shaded area represents the region within one standard deviation of the climatology. (c) Interannual evolution of the southern Borneo fire pixel count and precipitation in October. Types of El Niño events and intensities (based on Niño3.4 in October) are indicated at the bottom of the figure. (d) Relationship between southern Borneo fire pixel count and precipitation in October. The blue curve shows an exponential relationship with $r^2 = 0.93$, $p < 0.001$.

A prolonged dry season, characterized by below normal October precipitation, was observed during the six El Niño years (1997, 2002, 2004, 2006, 2009, and 2015) in our study period (supplementary figure 1). During these years, the concurrent increases in fire occurrence in October reflect a typical link between biomass burning and drought, as well as drainage of peatland water tables (Page *et al* 2011, Kettridge *et al* 2015). However, fire activity does not increase with El Niño strength in every case. For example, 2006 was a very active fire year in spite of the fact that this El Niño event was relatively weak, as the Niño3.4 SST index reached a maximum of only 0.78 °C in October. Here, Niño3.4 is an index popularly used to gauge the strength of an El Niño and is defined as the averaged SST departure from the climatological value in a specific equatorial Pacific region (120 °W–170 °W, 5 °N–5 °S). The 2009 event was stronger with a Niño3.4 index of 0.94 °C in October, yet the fire activity during October was only moderate in southern Borneo. Interestingly, we find that the October fire occurrence in southern Borneo is more closely linked with the El Niño type than with its strength (figure 1(c)). In our study period, major fire episodes occurred during the

years of EP type of El Niño, whose maximum surface ocean warming is in the tropical EP (i.e., 1997, 2006, and 2015), while minor ones occurred during years of the CP type of El Niño, whose maximum surface ocean warming is in the tropical CP (i.e., 2002, 2004, and 2009). Past studies have already identified the type for all major El Niño (Fu *et al* 1986, Ashok *et al* 2007, Hong *et al* 2008, Kao and Yu 2009) events. The most striking difference between these two types of El Niño is the central location of their SST anomalies in the tropical Pacific. When these anomalies are centered in the tropical EP the event is defined as an EP El Niño, while an event where anomalies are centered in the tropical CP is defined as a CP El Niño (Yu and Kao 2007).

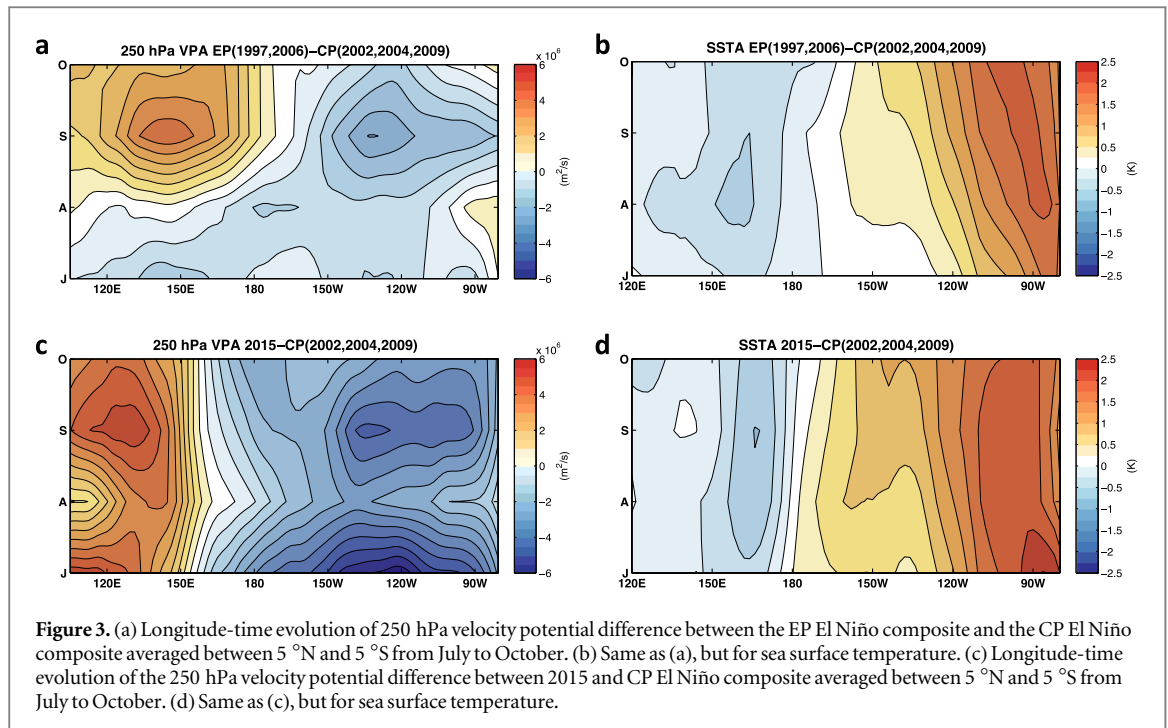
The October fire activity during the EP El Niño years (i.e., 1997, 2006, and 2015) stands out by almost an order of magnitude in southern Borneo (figures 1(c) and (d), the complementary analysis in supplementary figure 2(b) also indicates the larger October fire activity in 2015 than in 2006). Fires during the 2002 and 2004 CP El Niño years are not as abundant, although still higher than in neutral years. Despite the occurrence of a relatively strong CP El



Niño event, fire occurrence in 2009 is unusually low. Fire occurrence in October is also found highly correlated with precipitation ($r^2 = 0.93$, $p < 0.001$, $n = 11$) (figure 1(d)).

This raises the following question: What makes the EP El Niño more capable than the CP El Niño of increasing fire occurrence in southern Borneo? We find a key to the fire occurrence is the unusually low precipitation rates in October during EP El Niño (supplementary figures 1 and 2). During EP El Niño events, the fire season extends beyond November and its peak month shifts from September to October (figure 2(a), supplementary figure 2(a)). During CP El Niño episodes, on the other hand, fire seasonality remains similar to the climatology: fire activity peaks in September and mostly ends in November. This significant difference in fire seasonality between the EP and CP El Niño is not observed if all El Niño events are combined regardless of the type (figure 2(a), green line).

Fire season usually lags the dry season by 1–3 months because fuel humidity is a cumulative effect (Turetsky *et al* 2015). Additionally, precipitation is generally a better predictor for the magnitude of fire activity than SST or soil moisture parameters (Field and Shen 2008, Chen *et al* 2011). This is important particularly for peat fires common in southern Borneo. Peat fires usually go underground and last for months during drought when the water table is depleted (Page *et al* 2011, Kettridge *et al* 2015). Fires are often set for agricultural purposes, but a lower precipitation which significantly departs from the climatological mean in October in southern Borneo (figure 2(b), departures exceed 99% confidence intervals) will lower the fuel humidity and water table, which can indirectly cause the fire expansion and prolong the fire season. Therefore, the anomalously low precipitation in October acts as a major cause for a longer and more severe fire seasons during EP El Niño events.



The greater reduction in precipitation in October during the EP El Niños than during the CP El Niños is associated with the subsidence differences over Borneo between these two El Niño types, which can be seen from the 250 hPa VP differences (figure 3(a), mean of the two EP events minus mean of the three CP events). The VP differences indicate that the EP El Niño induces a stronger upper-level convergence over the western Pacific (including Borneo) from August to October and a stronger upper-level divergence over the EP. This upper-level difference pattern represents a stronger weakening effect of the Walker circulation by the EP El Niño than the CP El Niño and the anomalous subsidence over the western equatorial Pacific, which can result in the reduction of Borneo precipitation (supplementary figures 3). This weakening effect of the Walker circulation is related to the warmer SST anomalies of the EP El Niño in the tropical EP and colder SST anomalies in the tropical western Pacific than during the CP El Niño (figure 3(b)). Apparently, the more eastward-located warm anomalies during the EP El Niño are more effective in weakening the Walker circulation than the more westward-located warm anomalies characteristic of the CP El Niño (Zou *et al* 2014).

4. Model simulations

We further performed idealized climate model experiments to demonstrate the eastward-located warm SST anomalies and the associated apparent subsidence anomalies over the Maritime Continent regions during the EP El Niño. We conducted ensemble experiments for the EP and CP El Niño episodes using

NCAR Community Atmosphere Model (CAM4) with a T42 Euler spectral resolution. Each ensemble experiment consists of 10 members, and each member is forced with 22 month long SSTs associated with EP/CP El Niño (including El Niño developing phase, peak phase, and decaying phase), following Yu *et al* (2012). Technically, the model resolution ($2.8^\circ \times 2.8^\circ$) is not high enough to capture the exact location of maximum VP difference; thus, may not overlap exactly with Borneo. However, results from the model simulations clearly indicate that during EP El Niño SST in the EP is warmer and subsidence in the western Pacific is stronger (figure 4).

5. Conclusions

The 2015 El Niño has been confirmed to be the first EP El Niño in the tropical Pacific since 2006. Figures 3(c) and (d) show that the evolution of its upper-level VP and SST anomalies from August to October are similar to the evolution during the two previous EP El Niño events. Moreover, fire occurrence in 2015 in Borneo and surrounding regions of Indonesia such as Sumatra and Papua are remarkably similar to what were observed in 1997 and 2006. Fire season in 2015 extends well into November, although heavy rains have been reported on October 26th in Kalimantan, and substantially lowers the number of satellite active fire detections (van der Werf 2015). While the general community relies mostly on the strength of the 2015 El Niño to explain the associated anomalous fire activity, we suggest that it is the central location of the SST anomalies associated with this El Niño event that should be emphasized for the 2015 Borneo fire event.

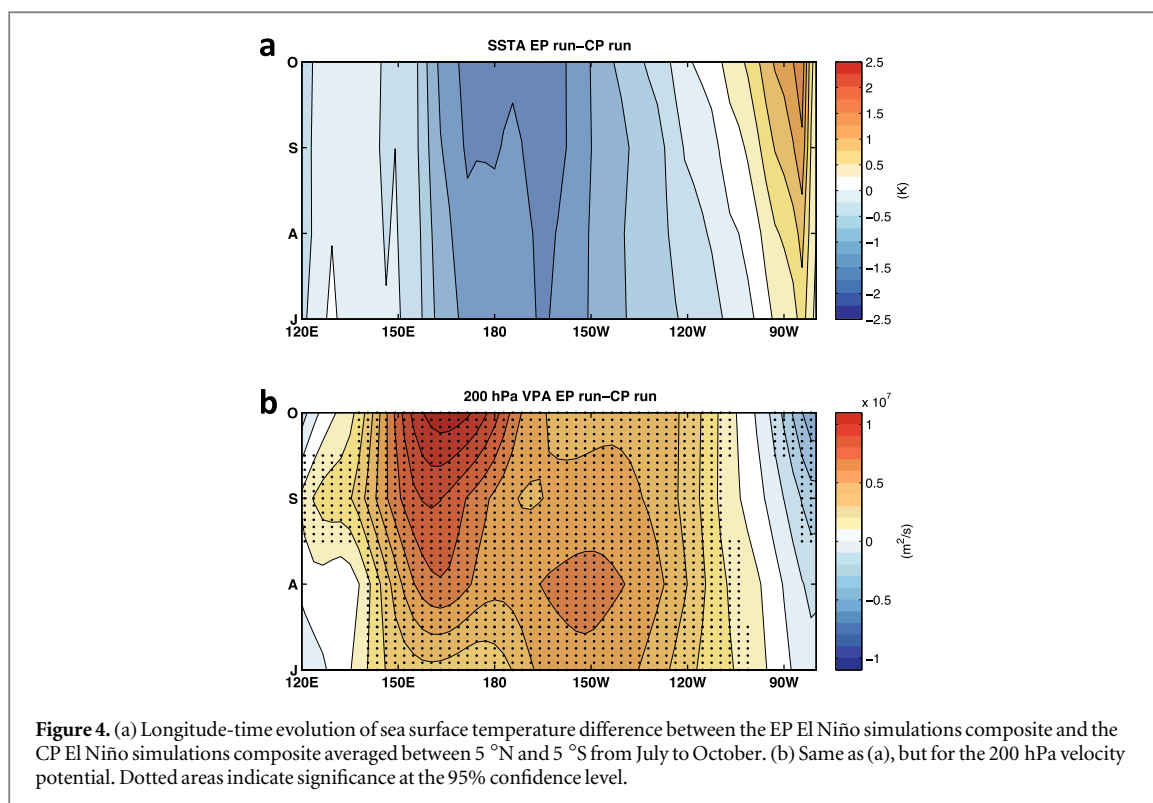


Figure 4. (a) Longitude-time evolution of sea surface temperature difference between the EP El Niño simulations composite and the CP El Niño simulations composite averaged between 5°N and 5°S from July to October. (b) Same as (a), but for the 200 hPa velocity potential. Dotted areas indicate significance at the 95% confidence level.

Thus, projecting the location of El Niño events might be more important than projecting their strength for fire management in southern Borneo since there is a tendency for large Borneo fires to occur during the EP than CP type of El Niño events.

Acknowledgments

We thank Yu-Chiao Liang for helpful discussions. We are also grateful to Dr Houk Paek for providing the model simulation data. This work was supported by funding from the Ministry of Science and Technology, Taiwan, grants MOST 104-2111-M-002-008. JYY is supported by US National Science Foundation under Grants AGS-1233542 and AGS-1505145.

References

- Arino O, Casadio S and Serpe D 2012 Global night-time fire season timing and fire count trends using the ATSR instrument series *Remote Sens. Environ.* **116** 226–38
- Ashok K, Behera S K, Rao S A, Weng H and Yamagata T 2007 El Niño Modoki and its possible teleconnection *J. Geophys. Res.* **112** C11007
- Capotondi A and Sardeshmukh P 2015 Optimal precursors of different types of ENSO events *Geophys. Res. Lett.* **42** 9952–60
- Chen M Y, Xie P P, Janowiak J E and Arkin P A 2002 Global land precipitation: a 50-yr monthly analysis based on gauge observations *J. Hydrometeorology* **3** 249–66
- Chen Y, Randerson J T, Morton D C, DeFries R S, Collatz G J, Kasibhatla P S, Giglio L, Jin Y and Marlier M E 2011 Forecasting fire season severity in South America using sea surface temperature anomalies *Science* **334** 787–91
- Danielsen F *et al* 2009 Biofuel plantations on forested lands: double jeopardy for biodiversity and climate *Conserv. Biol.* **23** 348–58
- Field R D and Shen S S P 2008 Predictability of carbon emissions from biomass burning in Indonesia from 1997 to 2006 *J. Geophys. Res.* **113** G04024
- Field R D, van der Werf G R and Shen S S P 2009 Human amplification of drought-induced biomass burning in Indonesia since 1960 *Nat. Geosci.* **2** 185–8
- Fu C, Diaz H F and Fletcher J O 1986 Characteristics of the response of sea surface temperature in the central Pacific associated with warm episodes of the Southern Oscillation *Mon. Weather Rev.* **114** 1716–38
- Giglio L 2007 Characterization of the tropical diurnal fire cycle using VIRS and MODIS observations *Remote Sens. Environ.* **108** 407–21
- Giglio L, Csiszar I and Justice C O 2006 Global distribution and seasonality of active fires as observed with the terra and aqua moderate resolution imaging spectroradiometer (MODIS) sensors *J. Geophys. Res.* **111** G02016
- Hendon H H 2003 Indonesian rainfall variability: impacts of ENSO and local air–sea interaction *J. Clim.* **16** 1775–90
- Hong C-C, Lu M-M and Kanamitsu M 2008 Temporal and spatial characteristics of positive and negative Indian Ocean dipole with and without ENSO *J. Geophys. Res.* **113** D08107
- Huang B, Banzon V F, Freeman E, Lawrimore J, Liu W, Peterson T C, Smith T M, Thorne P W, Woodruff S D and Zhang H-M 2015 Extended reconstructed sea surface temperature version 4 (ERSST.v4): I. Upgrades and intercomparisons *J. Clim.* **28** 911–30
- Kalnay E *et al* 1996 The NCEP/NCAR 40-year reanalysis project *Bull. Am. Meteorol. Soc.* **77** 437–71
- Kao H-Y and Yu J-Y 2009 Contrasting Eastern-Pacific and Central-Pacific types of ENSO *J. Clim.* **22** 615–32
- Kettridge N, Turetsky M R, Sherwood J H, Thompson D K, Miller C A, Benscoter B W, Flannigan M D, Wotton B M and Waddington J M 2015 Moderate drop in water table increases peatland vulnerability to post-fire regime shift *Sci. Rep.* **5** 8063
- Liu W, Huang B, Thorne P W, Banzon V F, Zhang H-M, Freeman E, Lawrimore J, Peterson T C, Smith T M and Woodruff S D 2015 Extended reconstructed sea surface temperature version 4 (ERSST.v4): II. Parametric and structural uncertainty estimations *J. Clim.* **28** 931–51

- Liu Z, Ostrenga D, Teng W and Kempler S 2012 Tropical rainfall measuring mission (TRMM) precipitation data and services for research and applications *Bull. Am. Meteorol. Soc.* **93** 1317–25
- Marlier M E 2012 El Niño and health risks from landscape fire emissions in southeast Asia *Nat. Clim. Change* **3** 131–6
- Mooney C Z and Duval R D 1993 *Bootstrapping: A Nonparametric Approach to Statistical Inference* (Newbury Park, CA: Sage)
- Page S E, Rieley J O and Banks C J 2011 Global and regional importance of the tropical peatland carbon pool *Glob. Change Biol.* **17** 798–818
- Page S E, Siegert F, Rieley J O, Boehm H, Jaya A and Limin S 2002 The amount of carbon released from peat and forest fires in Indonesia during 1997 *Nature* **420** 61–5
- Reid J S, Xian P, Hyer E J, Flatau M K, Ramirez E M, Turk F J, Sampson C R, Zhang C, Fukada E M and Maloney E D 2012 Multi-scale meteorological conceptual analysis of observed active fire hotspot activity and smoke optical depth in the Maritime Continent *Atmos. Chem. Phys.* **12** 2117–47
- Sodhi N S, Koh L P, Brook B W and Ng P K L 2004 Southeast Asian biodiversity: an impending disaster *Trends Ecol. Evol.* **19** 654–60
- Turetsky M R, Benscoter B, Page S, Rein G, van der Werf G R and Watts A 2015 Global vulnerability of peatlands to fire and carbon loss *Nat. Geosci.* **8** 11–4
- van der Werf G R 2015 Indonesian fire season progression globalfiredata.org (<http://globalfiredata.org/updates.html>)
- van der Werf G R, Randerson J T, Giglio L, Collatz G J, Mu M, Kasibhatla P S, Morton D C, DeFries R S, Jin Y and van Leeuwen T T 2010 Global fire emissions and the contribution of deforestation, savanna, forest, agricultural, and peat fires (1997–2009) *Atmos. Chem. Phys.* **10** 11707–35
- van der Werf G R, Randerson J T, Giglio L, Gobron N and Dolman A J 2008 Climate controls on the variability of fires in the tropics and subtropics *Glob. Biogeochem. Cycles* **22** GB3028
- Voiland A 2015 Heavy Smoke Blankets Borneo earthobservatory.nasa.gov (http://earthobservatory.nasa.gov/IOTD/view.php?id=86847&eoqn=image&eoci=related_image)
- Wooster M J, Perry G L W and Zoumas A 2012 Fire, drought and El Niño relationships on Borneo (Southeast Asia) in the pre-MODIS era (1980–2000) *Biogeosciences* **9** 317–40
- Yu J-Y and Kao H-Y 2007 Decadal changes of ENSO persistence barrier in SST and ocean heat content indices: 1958–2001 *J. Geophys. Res.* **112** D13
- Yu J-Y, Zou Y, Kim S T and Lee T 2012 The changing impact of El Niño on US winter temperatures *Geophys. Res. Lett.* **39** L15702
- Zou Y, Yu J-Y, Lee T, Lu M-M and Kim S T 2014 CMIP5 model simulations of the impacts of the two types of El Niño on the US winter temperature *J. Geophys. Res. Atmos.* **119** 3076–92