

## Subnational distribution of average farm size and smallholder contributions to global food production

This content has been downloaded from IOPscience. Please scroll down to see the full text.

2016 Environ. Res. Lett. 11 124010

(<http://iopscience.iop.org/1748-9326/11/12/124010>)

View [the table of contents for this issue](#), or go to the [journal homepage](#) for more

Download details:

IP Address: 210.77.64.110

This content was downloaded on 11/04/2017 at 06:10

Please note that [terms and conditions apply](#).

You may also be interested in:

[Mapping farm size globally: benchmarking the smallholders debate](#)

Patrick Meyfroidt

[Local food in Iceland: identifying behavioral barriers to increased production and consumption](#)

Þórhildur Ósk Halldórsdóttir and Kimberly A Nicholas

[Redefining agricultural yields: from tonnes to people nourished per hectare](#)

Emily S Cassidy, Paul C West, James S Gerber et al.

[Food appropriation through large scale land acquisitions](#)

Maria Cristina Rulli and Paolo D'Odorico

[Environmental impacts of food trade via resource use and greenhouse gas emissions](#)

Carole Dalin and Ignacio Rodríguez-Iturbe

[Assessing the potential additionality of certification by the Round table on Responsible Soybeans and the Roundtable on Sustainable Palm Oil](#)

Rachael D Garrett, Kimberly M Carlson, Ximena Rueda et al.

[Comparison of production-phase environmental impact metrics derived at the farm- and national-scale for United States agricultural commodities](#)

Christine Costello, Xiaobo Xue and Robert W Howarth

[Toward a protocol for quantifying the greenhouse gas balance and identifying mitigation options in smallholder farming systems](#)

T S Rosenstock, M C Rufino, K Butterbach-Bahl et al.

## Environmental Research Letters



## LETTER

## Subnational distribution of average farm size and smallholder contributions to global food production

## OPEN ACCESS

## RECEIVED

11 August 2016

## REVISED

24 October 2016

## ACCEPTED FOR PUBLICATION

26 October 2016

## PUBLISHED

30 November 2016

Original content from this work may be used under the terms of the [Creative Commons Attribution 3.0 licence](#).

Any further distribution of this work must maintain attribution to the author(s) and the title of the work, journal citation and DOI.

Leah H Samberg<sup>1</sup>, James S Gerber<sup>1</sup>, Navin Ramankutty<sup>2</sup>, Mario Herrero<sup>3</sup> and Paul C West<sup>1</sup><sup>1</sup> Institute on the Environment, University of Minnesota, 1954 Buford Ave, St Paul, MN 55108, USA<sup>2</sup> Liu Institute for Global Issues and Institute for Resources, Environment, and Sustainability, the University of British Columbia, Vancouver, British Columbia V6T 1Z2, Canada<sup>3</sup> Commonwealth Scientific and Industrial Research Organisation (CSIRO), 306 Carmody Road, St Lucia, 4067 Qld, AustraliaE-mail: [lsamberg@umn.edu](mailto:lsamberg@umn.edu)**Keywords:** agriculture, food security, smallholders, land useSupplementary material for this article is available [online](#)**Abstract**

Smallholder farming is the most prevalent form of agriculture in the world, supports many of the planet's most vulnerable populations, and coexists with some of its most diverse and threatened landscapes. However, there is little information about the location of small farms, making it difficult both to estimate their numbers and to implement effective agricultural, development, and land use policies. Here, we present a map of mean agricultural area, classified by the amount of land per farming household, at subnational resolutions across three key global regions using a novel integration of household microdata and agricultural landscape data. This approach provides a subnational estimate of the number, average size, and contribution of farms across much of the developing world. By our estimates, 918 subnational units in 83 countries in Latin America, sub-Saharan Africa, and South and East Asia average less than five hectares of agricultural land per farming household. These smallholder-dominated systems are home to more than 380 million farming households, make up roughly 30% of the agricultural land and produce more than 70% of the food calories produced in these regions, and are responsible for more than half of the food calories produced globally, as well as more than half of global production of several major food crops. Smallholder systems in these three regions direct a greater percentage of calories produced toward direct human consumption, with 70% of calories produced in these units consumed as food, compared to 55% globally. Our approach provides the ability to disaggregate farming populations from non-farming populations, providing a more accurate picture of farming households on the landscape than has previously been available. These data meet a critical need, as improved understanding of the prevalence and distribution of smallholder farming is essential for effective policy development for food security, poverty reduction, and conservation agendas.

**Introduction**

In recent years, the attention of global agriculture and development communities has turned toward the world's smallest farms [1–3]. Evidence is mounting that smallholder and family farms are crucial to feeding the planet, and that successful policies aimed at poverty alleviation, food security, and protection of biodiversity and natural resources depend on the inclusion and participation of small farmers [4–6].

This shift aligns with increased global focus on the sustainable development goals (SDGs), as agricultural development has been identified as an essential component of the first goal of reducing poverty and hunger [2], and investments in small farms have been specifically identified by the United Nations as a way to address SDGs relating to poverty, nutrition, hunger, and environmental sustainability [3].

There is good reason for this focus; small farms, often cultivated by single families on very small plots

of land, are the most prevalent form of agriculture in the world [6–8]. Agriculture remains one of the only global industries that relies largely on family scale labor and production [9], and small farms support many of the planet’s most vulnerable populations and coexist with some of its most diverse and threatened landscapes [10–13]. Crop and landscape diversity on small farms can regulate ecosystem processes and increase system resilience [14, 15], and small farms are seen in many systems to have greater crop productivity per unit area than large farms [15, 16].

A number of assessments have found that growth in smallholder agriculture can have strong impacts on poverty reduction [3, 9, 17]. The United Nations has stated that achieving poverty reduction goals requires policies that cater to the needs of smallholders [3], and last year the Gates Foundation pledged \$2 billion for investment in agricultural technology innovations that will enhance the productivity of smallholder farmers, as part of a push to meet SDG targets [18].

Recent attempts to quantify the prevalence and contributions of small and family farms (these terms often used interchangeably) estimate that, at the global scale, there are more than 475 million farms that are less than two hectares in size, and that small farms control from 40% to more than 50% of global farmland and produce more than half of the world’s food [4, 7, 8, 19].

However, few studies are able to compare the impact on poverty of agricultural growth from large farms versus that from small farms [2]. A 2015 UN report explicitly stated that lack of attention to and investment in small farms has been ‘exacerbated by the poor quality of data on the number of smallholders, their contribution to total agricultural production and GDP, and their share in labor force participation’ [3].

### Challenges of mapping small farms

Effective policies for agricultural innovation, land use, or poverty and hunger reduction require identification of groups of producers with similar production strategies, resources, and constraints [20, 21], and classifying and mapping global agricultural systems is essential to designing appropriate technologies and identifying environmental impacts of agriculture [22, 23]. However, despite the recent spotlight on small farms and increasing consensus on their importance, spatially explicit data on smallholder farmers are virtually absent.

Global-scale assessments of smallholder farming, including the World Census of Agriculture collected by the United Nations Food and Agriculture Organization (FAO), provide data at the national scale only [4, 6, 24]. There is also an absence of systematic and comparable data for all countries, including a wide variation among and within countries as to the terminology used to describe small farms, what thresholds

are used to define farm size classes, and whether the smallest farms are even included [4, 24, 25].

In addition, there is a need for improved data on human populations and land-use practices, especially in the developing world [18, 21]. Over the past decade there have been numerous ongoing efforts to map global land use, including farming systems, that combine remotely sensed land cover data, crop production data, and spatial estimates of human population density [see: 10, 20, 26–29]. However, none of these previous large-scale approaches to mapping the human landscape incorporate household census data that can, for example, distinguish between farming and non-farming populations.

### Mapping the concentration of farming households

Here, we create a map of the concentration of farming households at subnational scales across much of the developing world, in order to better assess the role of smallholders in food security and for use in effective targeting of agricultural and land use policies. We focus on Latin America, sub-Saharan Africa, and East and South Asia, which together account for nearly 90% of the world’s farms [4]. This product improves on our previous ability to quantify smallholder farming in two primary ways. First, it incorporates household-level census data on farming activity, allowing us to differentiate agricultural populations from overall human population density. Second, the use of census microdata at subnational scales allows for greater spatial disaggregation of household data than has previously been possible [30], allowing us to identify specific administrative units where agricultural production is likely to be most dependent on small farms. We use this mapped product to estimate the contribution of smallholder systems to global agricultural extent, farming population, and food production.

## Methods

### IPUMS data extraction

We extracted household census data from the Integrated Public Use Microdata Series-International (IPUMS) database, which harmonizes household-level demographic variables across countries and years [31, 32]. All records were extracted from the most recent available census for all available countries in Latin America, sub-Saharan Africa, and South and East Asia. These three global regions are heavily represented in the IPUMS database, and largely comprise developing countries in the global south, where smallholder farming is both crucial to livelihoods and poorly quantified through existing datasets. Census dates range from 1983–2011, and all but five are dated 2000 or later.

Within each country, we utilized the smallest subnational administrative unit for which data were

available in the IPUMS dataset, with the exception of Mexico where the smallest available division produced more than 3000 units. For each subnational unit the following were tabulated: (1) records indicating the respondent was a household head (variable = RELATE); (2) among household heads, records indicating that the respondent was involved in agriculture as their primary industry (variable = INDGEN). This variable specifies individual employment of census respondents based on the United Nations' International Standard Industrial Classification of All Economic Activities, and may include forestry and fisheries activities as well as cropping and livestock husbandry. We consider each household head working in agriculture to represent a farming household. Tabulated counts of farming households were scaled up to approximate the total number in each subnational unit using weights provided by IPUMS.

### Estimation of agricultural land

We define agricultural land as the sum of cropland, including permanent tree crops, and pasture area in each unit, using a new global data set of croplands and pastures for year 2010 [33]. This new data set was developed using an approach similar to that of Ramankutty *et al* [24], but using updated methodology, and by calibrating MODIS-satellite based land cover from Boston University against a global compilation of agricultural census statistics. While Ramankutty *et al* [29] used the final classified MODIS land cover dataset, Plouffe *et al* [33] used the posterior land-cover probabilities that are calculated in the process of making the MODIS land cover product; this resulted in greater accuracy in the spatial patterns of the final cropland and pasture maps.

By overlaying census data onto this map of agricultural extent, we are able to calculate the number of farming households per hectare of agricultural land. The inverse of this farming household density provides an estimate of the amount of agricultural land area per farming household in each subnational administrative unit. We refer to this figure as the mean agricultural area (MAA) for each unit, defined as hectares of agricultural land divided by number of farming households. While differing from traditional metrics of farm size, it is designed as a proxy for the prevalence of smaller or larger farms on the landscape.

### Classification of units by MAA

Classification occurred in three steps. The GRUMPv1 population density grid for the year 2000 was used to classify units with more than one thousand people per km<sup>2</sup> as urban [34]. We classified all remaining units by MAA. Common thresholds for defining small farms are two and five hectares [6]. We use a MAA of five hectares as our definition for smallholder systems in order to better account for both the range of farm size distributions in our study area (especially in Latin

America) and the prevalence of mixed systems (especially in sub-Saharan Africa) that incorporate pasture together with cropland, increasing the amount of agricultural area per farming household. Units with less than two hectares per farming household are further classified as very small farms. Remaining units are classified to represent the log-normal distribution of MAA in our sample: units of medium sized farms are defined as having a mean farm size of 5–15 hectares, large farming as 15–50 hectares, and very large farming as 50 hectares or more. Third, we classified primarily extensive grazing lands as those units with large or very large mean farm size (equivalent to mean agricultural area greater than 15 ha) where pasture makes up more than 90% of agricultural land.

### Construction of model to classify units for which there is no available census data

While IPUMS provides extensive census data in our three regions of interest, there are a number of countries for which census data is unavailable. MAA is correlated with population density, as well as with other features of the agricultural landscape; thus incorporating available data into a simple logistic model allowed us to estimate classifications at subnational scales for remaining countries in these regions.

To assess the best predictors of MAA, we clipped each subnational unit to the extent of agricultural land, and calculated the percentage of the unit area taken up by agricultural land and the percent of agricultural land in pasture, as well as the mean population density [34], mean market access index [35], and the mean value of a geo-wiki-based field size index [23]. Using a set of nominal logistic regressions in JMP statistical software [36], we tested each combination of these factors, and their two-way interactions, to determine the best model for predicting MAA classification. Units classified as urban or under extensive grazing regimes were excluded from the model. The most parsimonious model included human population density [34], percentage of unit in agricultural land, percentage of agricultural land in pasture, field size index [28], and geographic region, along with significant two-way interaction terms (table S1).

The model was used to predict classifications for missing countries in the three global regions at the first subnational administrative unit in each country [37]. The analysis was run with all available IPUMS units, as well as with random subsets comprising 50% of the data. Assessed based on existing data, this model successfully predicted farm size category with an  $R^2$  of 0.49 and a Chi-Square value of  $<0.0001$ , and properly classified 83% of units with MAA less than five hectares as smallholder units (figure S1). The model was also tested iteratively, with each country with IPUMS data excluded, and units assigned a predicted classification. The iterative model fit differed by region: In

Asia, 95% of units were properly classified as small or very small; in sub-Saharan Africa 87% of units assigned to those classes were assigned correctly. In Latin America, 70% of units assigned as smallholder classifications were in fact classified as such, with all but one of the misclassified units found in the medium category.

To calculate the number of farms in regions classified as small and very small, units in these categories were assigned a farm size value equivalent to the average MAA in that size class for that region. This approach is similar to that taken by others when looking at the relationship between land area, farm numbers, and farm size [19].

### Comparison with country-level FAO data

We compared farming household numbers calculated from the IPUMS data to the number of agricultural holdings reported in each country by the FAO in the 2014 State of Food and Agriculture report [6] for the 40 countries in our analysis for which data is available from both datasets. FAO data is compiled from agricultural censuses, independent from population census data, from 1960 through 2011. Nigeria was dropped from analysis due to the extremely low FAO estimate, potentially a result of the age of the agricultural census (1960). For the remaining 39 countries, we performed a linear regression of the number of holdings reported by the FAO and the number of farms as calculated through our methodology at the national scale. Both FAO and IPUMS numbers were normalized by total population in each country in order to account for underlying differences between countries. We also performed a country-level regression of our agricultural area and the agricultural area reported by the FAO, normalized by total land area in the country; though these data are not independent, as the cropland and pasture maps in our analysis incorporate FAO figures, this allows us to cross-check these data at the subnational scale of our analysis.

### Assessing the role of smallholders in food production

In order to estimate the contribution of each MAA class toward global crop production, we used production figures drawn from the EarthStat crop database, which integrate agricultural census data and remote sensing to estimate patterns of crop area and yields at a 5 min global resolution [38]. We calculated the proportion of global production of 17 major crops—the 16 highest-calorie producing crops consumed as food, as well as cotton, as per West *et al* [39]—that takes place in units where MAA is less than five hectares. These 17 crops account for more than 85% of global calorie production, as well as a majority of the water, fertilizer, and other inputs to agriculture.

We estimated the contribution of each farm size class to global calorie production, following the methodology of Cassidy *et al* [40]. For each crop, Cassidy *et al* assessed allocation to food, feed, biofuels, and other uses, identified proportions of crops used for domestic consumption, and used USDA conversion ratios to convert calories in animal feed to meat, egg, and dairy calories for human consumption at the national scale. For the 41 food crops analyzed, we assessed both total calorie production and production of available food calories at subnational scales.

Finally, we used a map of cattle density [41] to calculate the mean cattle density in each subnational unit, and analyzed units by MAA classification.

## Results and discussion

### Mapping MAA

We were able to identify farming households from IPUMS census data in 44 countries in Latin America, sub-Saharan Africa, and South and East Asia (table S2). Records were tabulated at the first or second administrative unit in each country, for a total of 1965 subnational units. The logistic model allowed us to estimate farm size classifications at subnational scales for 39 additional countries. The total analysis therefore comprises 2412 subnational administrative units in 83 countries.

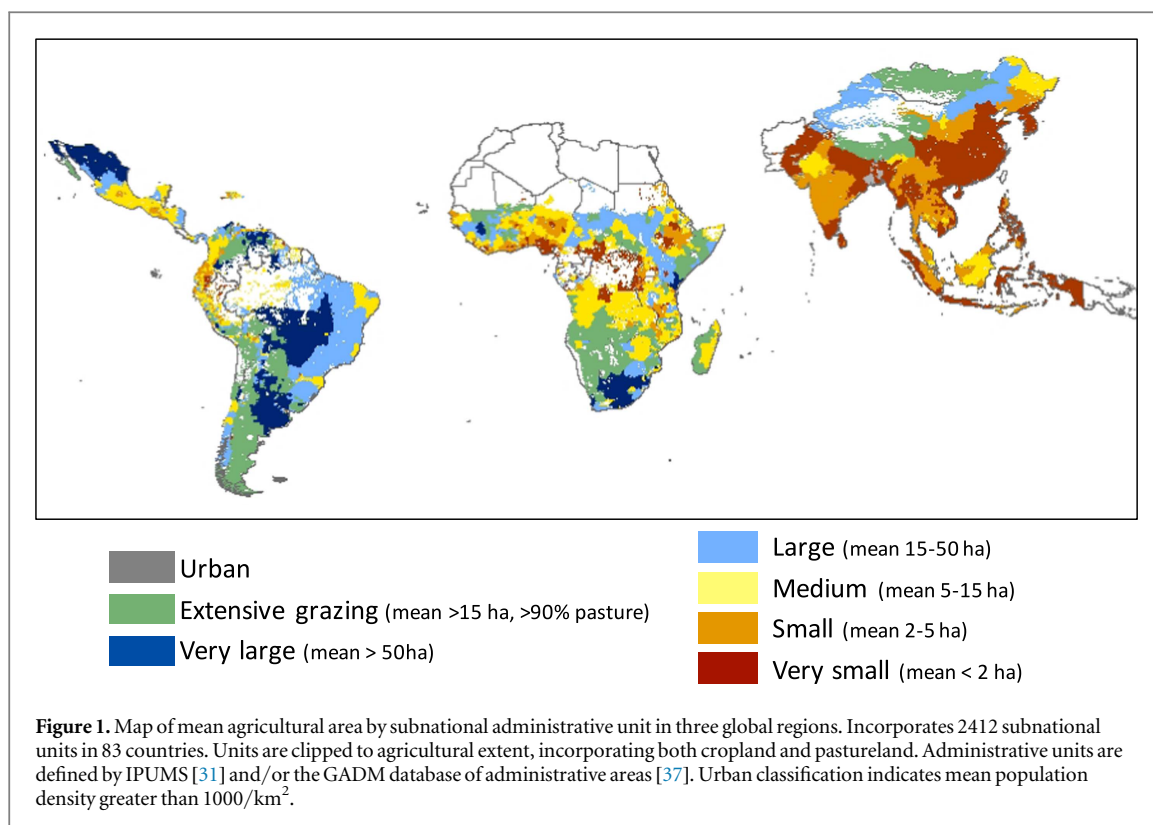
Figure 1 displays the map of MAA in our three global regions. The study area includes 2094 331 241 hectares of cropland. Approximately 65% of this agricultural land is in pasture, with 35% in cropland. Overall this accounts for roughly 55% of global agricultural land.

### Prevalence of smallholder systems

We identified 918 administrative units with a high density of farming households, equating to less than five hectares of agricultural land per farming household; 669 are drawn from the IPUMS data, with another 449 predicted by the model. These units, which we consider likely smallholder systems, are distributed across 67 countries, with 408 units in sub-Saharan Africa, 329 in Asia, and 181 in Latin America (table 1). Together, these units with a MAA less than 5 hectares account for 586 661 120 hectares of agricultural land, or 28% of agricultural land in the 83 countries, and are farmed by roughly 383 million households.

In the 44 countries with census data available through IPUMS, we calculate a total of nearly 391 million farms, 85% of which are located in units where small farms likely predominate (table 1). The vast majority of farms are found Asia, making up 82% of the farms in our study area and 89% of farms in smallholder units. Latin America contributes 4% of farms and 1% of farms in smallholder areas, while 14% of farms and 11% of farms in smallholder areas are found





in sub-Saharan Africa. These figures are in keeping with global distributions of farm numbers drawn from FAO census data [4].

Though the vast majority of farms in most countries are smallholder or family farms [4, 19], highly unequal land distribution means that in many places these farmers control only small proportions of land [6, 42]. This methodology therefore identifies subnational units in which smallholder production is more likely to be a dominant component of the agricultural landscape, and is unable to capture the contributions of small farmers in regions where the landscape is dominated by large farms.

#### Relationship to FAO data

The farm household data from IPUMS is strongly correlated with independently collected FAO data on agricultural holdings at the national level [6] for the 39 countries for which data are available ( $R^2 = 0.65$ ; figure S2(a)). Our national figures were more likely to be lower than FAO tallies (25 out of 39 countries), rather than higher, indicating that our methodology is more likely to produce an underestimate than an overestimate of farm numbers. Our estimate of the total amount of agricultural land in each country is also generally consistent with FAO data from the 2011 census ( $R^2 = 0.71$ ; figure S2(b)). The finer spatial resolution of the IPUMS data compared to FAO data allows us to extend the national-level estimates of farm numbers to subnational scales for the first time in many countries.

#### Contribution of smallholder farming to global food production

Smallholder units, with less than five hectares of agricultural land per farming household, account for a significant portion of global production of many crops, contributing more than 80% of global rice production, 75% of global production of groundnuts and oil palm, nearly 60% of global production of millet and cassava, and more than 40% of production of cotton and sugarcane (figure 2; table 2). We also identify crops that are less reliant on smallholder production; for example, these regions account for only 11% of global soy production (table 2).

Including 41 crops, accounting for more than 90% of global calorie production [40], we find that units of high-density smallholder farming across these 83 countries are responsible for 41% of total global calorie production, and 53% of the global production of food calories for human consumption (table 3(a)). Within these 83 countries, units with less than five hectares of agricultural land per farming household contribute 70% of food calories produced.

#### Contribution of smallholder farming to regional staple food production

Within the 83 countries studied, subnational units with MAA of five hectares or less account for more than half of the production by mass of eight staple crops: rice, groundnut, cassava, millet, wheat, potato, maize, barley, and rye; illustrating the specific importance of smallholder production for food security. Other assessments, such as one by Herrero *et al* [8],

**Table 1.** Administrative units by mean agricultural area classification and region.

Region	MAA Classification	Full analysis—83 countries			IPUMS data—44 countries			
		# Of Units <sup>a</sup>	% of Agricultural land <sup>a</sup>	# Farming households in small-holder units <sup>a</sup>	# Of Units <sup>b</sup>	% Of Agricultural land <sup>b</sup>	# Of Farming households <sup>b</sup>	% Of Total farming households <sup>b</sup>
Asia	Urban	28	0.43%		17	0.38%	8673 482	2.22%
	Grazing	26	7.46%		23	9.23%	1110 760	0.28%
	Large	6	5.24%		2	6.47%	4677 600	1.20%
	Medium	19	2.81%		15	3.47%	10 656 230	2.73%
	Small	127	10.09%	78 588 430	90	12.15%	76 675 104	19.62%
	V. Small	202	12.89%	258 535 556	111	13.33%	218 324 455	55.86%
LA	Urban	25	0.01%		24	0.01%	85 850	0.02%
	Grazing	194	6.71%		194	8.31%	907 227	0.23%
	V. Large	183	9.13%		183	11.31%	1468 607	0.38%
	Large	168	6.82%		166	8.43%	5451 049	1.39%
	Medium	259	3.01%		232	3.47%	6399 999	1.64%
	Small	142	0.45%	2375 417	127	0.50%	2299 368	0.59%
	V. Small	39	0.02%	177 570	39	0.03%	301 820	0.08%
SSA	Urban	31	0.03%		24	0.03%	307 143	0.08%
	Grazing	139	11.96%		90	5.19%	2320 595	0.59%
	V. Large	16	1.81%		15	2.22%	301 393	0.08%
	Large	110	6.80%		75	5.22%	4063 492	1.04%
	Medium	290	9.77%		206	5.65%	11 393 934	2.92%
	Small	235	3.33%	20 772 546	197	3.51%	17 990 560	4.60%
	V. Small	173	1.24%	22 768 078	135	1.09%	17 413 470	4.46%
<b>Smallholder units</b>		918	28.01%	383 217 597	669	30.61%	333 004 776	85.21%
<b>Total</b>		2412	100%	383 217 597	1965	100%	390 822 139	100%

<sup>a</sup> Total number of administrative units, percent of total agricultural land (cropland + pasture), and number of farms in units with mean agricultural area <5 ha for all countries included in the study, both census and modeled classifications.

<sup>b</sup> Total number of administrative units, percent of total agricultural land (cropland + pasture), and number of farms in each unit for 44 countries included in IPUMS census data.

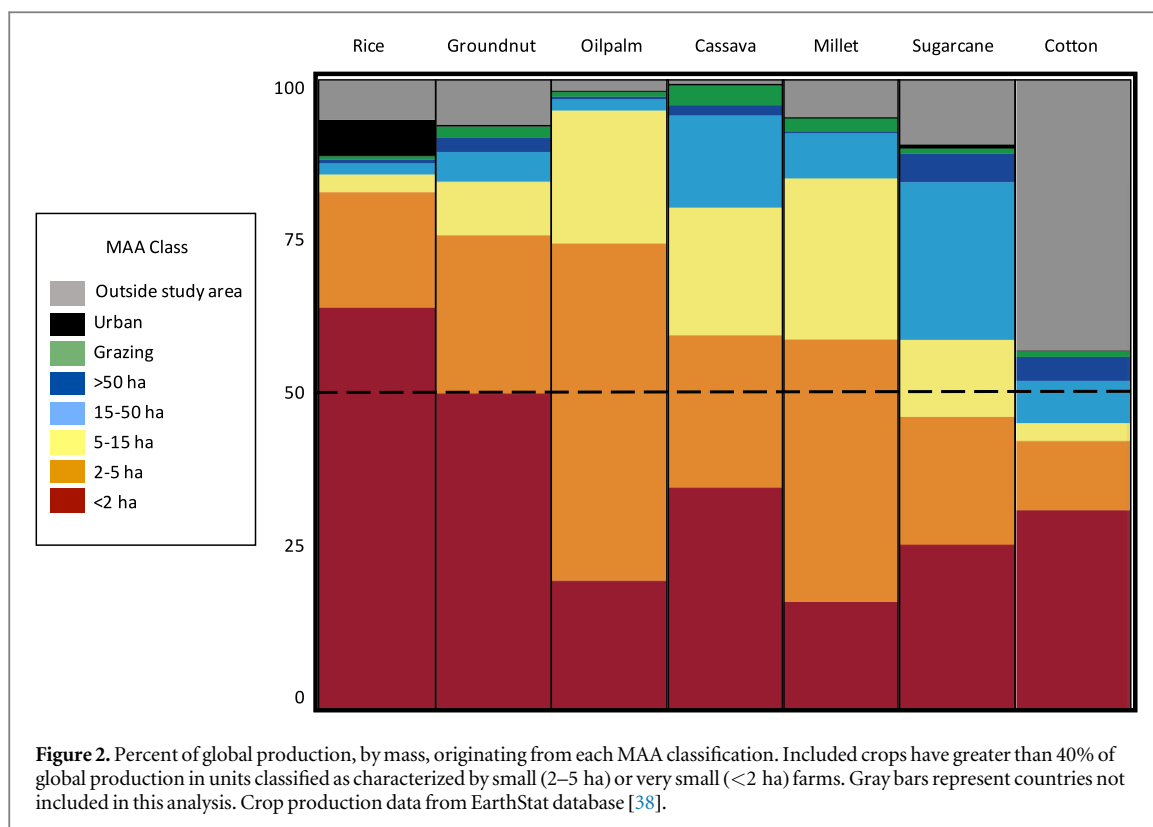
have shown that 50% of global cereal production occurs in the developing world, including 86% of rice and 67% of millet. Our results indicate that areas of high-density smallholder agriculture account for much of this staple crop production.

The role of smallholder systems in food production varies between regions (figure 3(a)). In Asia, production is driven by units with MAA less than five hectares, which produce 90% of food calories in the region, in addition to the farming carried out in densely populated areas classified as urban in this study. In sub-Saharan Africa, these smallholder units produce half of food calories in the region, and units of medium-density farm households (mean farm size 5–15 ha) account for another 26%. In Latin America this pattern is reversed, with 70% of food calories produced in regions with large and very large MAA, and less than 7% produced in units with MAA less than five hectares. However, as less than 2% of agricultural land in Latin America is found in these smallholder units, that proportion of production represents greater productivity per hectare than is found in areas characterized by larger farms.

In all regions, a greater proportion of the calories produced in units with small MAA are consumed as food, rather than converted to feed, fuel, or other uses. In smallholder areas, 70% of calories produced are available for consumption as food, compared to 66% in the 83 countries studied (table 3(b)) and 55% for the global agricultural system as a whole [40].

Cassidy *et al* found that percent of calories delivered to the food system varies widely by region, with 90% of calories produced in India delivered to the food system, in contrast with 50% in Brazil. We add to this analysis by disaggregating likely smallholder-dominated systems from other agricultural systems within global regions. In Latin America, 47% of calories produced on units with large or very large MAA are consumed as food, in contrast to 70% in smallholder units and 80% on farms in urban areas (table 3(b)). Similarly, in Asia, only 38% of calories produced in areas of large farming are consumed by humans—likely due to dependence on livestock in those regions—compared to 70% in smallholder-dominated units and 90% on urban-area farms.

MAA classifications also provide a useful metric in the study of livestock systems. An analysis of cattle



density displays patterns similar to those seen in crop production (figure 3(b)). In Asia and sub-Saharan Africa, smallholder units have, on average, the highest cattle density. In Latin America, these units have the lowest density of livestock, while units dominated by large farms have the highest average number of cattle per hectare. These distinct patterns provide insight into the different roles of livestock production in these systems. The high cattle densities in regions of small farming in Asia and sub-Saharan Africa indicate the importance of livestock for the livelihoods of small farmers. In Latin America, the high density of livestock in regions with large MAA, and the much lower density in regions likely dominated by small farms, illustrate the extent to which cattle is incorporated into commodity production rather than mixed or subsistence farming systems.

### Limitations

Although combining household and land cover data greatly improve estimates of the spatial distribution of small farms, there are limitations to this approach. First, in much of the world, farm sizes are heterogeneous, with a right-skewed distribution, and a small number of large farms control the majority of agricultural land [6, 42]. Our use of a mean farm size does not capture this distribution; however, in areas with MAA of five hectares or less a large proportion of land is likely controlled by smallholders, whether or not there are also larger landholdings present, and these subnational units are the key focus of our study. In regions with larger MAAs, there may also be a great

number of small farms, however their presence is masked by the dominance of large farms or less densely populated pasturelands. This is likely to be especially relevant in Latin America, where the distribution of land ownership is particularly unequal [4, 24], as well as in many parts of Africa where mixed cropping and pastoral systems create complex landscape mosaics [7, 10, 26].

Second, our method for counting farming households may incorporate errors in both directions, by including household heads who are employees on larger farms, or excluding household heads with their own farm who earn their primary income from another source. As smallholder farming is more labor-intensive than large-scale farming [15, 16], areas in which the majority of farming heads of households are laborers are unlikely to contain the highest levels of farm household density. This method also does not address questions of ownership or land tenure; farms that are leased or organized under tenant farm systems may still be considered small farms. Farming systems differ in many ways, and this metric will inherently capture reality more closely in some places than others; however the strong correlation with FAO data on agricultural holdings, as well as the general agreement with farm numbers drawn from other sources, provide support for the utility of this approach in capturing farm numbers.

Third, land area is an imperfect metric for classifying smallholder farming; in many cases income thresholds, family labor use, or subsistence orientation are more useful and appropriate indicators



**Table 2.** Percent of global production by mean agricultural area classification.

Classification	Rice	Groundnut	Oilpalm	Cassava	Millet	Sugarcane	Cotton	Rapeseed	Wheat	Sorghum	Potato	Maize	Soy	Sunflower	Barley	Rye	Sugarbeet
V. Small	64.1%	50.3%	20.8%	35.5%	17.7%	26.3%	31.8%	29.5%	23.2%	5.3%	23.5%	13.1%	5.8%	2.0%	2.0%	2.0%	0.5%
Small	18.2%	25.0%	53.3%	24.0%	41.2%	20.1%	11.0%	6.5%	8.2%	25.5%	5.4%	10.3%	5.6%	5.7%	1.7%	1.5%	0.7%
Medium	2.8%	8.4%	21.0%	20.1%	25.3%	12.1%	2.8%	5.4%	1.7%	15.8%	2.5%	7.1%	2.9%	1.1%	1.0%	0.3%	2.1%
Large	1.8%	4.7%	1.8%	14.5%	7.1%	24.8%	6.7%	0.7%	1.9%	9.4%	2.9%	7.1%	14.3%	5.0%	0.7%	0.7%	2.5%
V. Large	0.6%	2.3%	0.4%	1.6%	0.2%	4.5%	3.8%	0.0%	3.2%	10.9%	1.0%	5.0%	22.3%	21.8%	0.7%	0.4%	0.0%
Grazing	0.5%	1.7%	0.7%	3.1%	2.1%	0.8%	0.9%	0.6%	0.3%	2.6%	0.9%	0.6%	0.6%	0.6%	0.2%	0.1%	0.1%
Urban	5.7%	0.3%	0.2%	0.3%	0.2%	0.6%	0.1%	1.7%	0.3%	0.0%	2.4%	0.1%	0.1%	0.0%	0.0%	0.0%	0.0%
<b>Percent of global production</b>																	
Smallholder units <sup>a</sup>	<b>82.3%</b>	<b>75.3%</b>	<b>74.1%</b>	<b>59.6%</b>	<b>58.9%</b>	<b>46.4%</b>	<b>42.8%</b>	<b>36.0%</b>	<b>31.4%</b>	<b>30.8%</b>	<b>28.9%</b>	<b>23.5%</b>	<b>11.4%</b>	<b>7.7%</b>	<b>3.7%</b>	<b>3.5%</b>	<b>1.2%</b>
Study region <sup>b</sup>	93.7%	92.7%	98.1%	99.2%	93.8%	89.3%	57.0%	44.5%	38.7%	69.5%	38.6%	43.3%	51.6%	36.2%	6.3%	5.1%	5.9%
<b>Crop production (100 000 tons)</b>																	
Smallholder units <sup>a</sup>	4695	236	867	938	149	5732	219	129	1758	167	866	1393	186	19	49	7	28
Study region	5344	291	1149	1562	237	11 029	291	159	2169	377	1155	2572	842	88	84	10	139
Global	5704	314	1171	1575	252	12 355	511	358	5603	542	2996	5934	1632	243	1325	199	2344

<sup>a</sup> Subnational units in study area with MAA <5 ha.

<sup>b</sup> 2412 units in 83 countries included in the study, both census and modeled classifications.

**Table 3.** Calorie production by region and MAA classification.

	Asia	Latin America	Sub-Saharan Africa	All regions
(a) Percent of global food calories produced by region and MAA Class <sup>a,b</sup>				
Urban	2.1%	0.0%	0.0%	2.1%
Grazing	0.1%	0.2%	0.4%	0.6%
Large and V. Large	0.5%	6.3%	1.3%	8.1%
Medium	2.8%	1.9%	1.8%	6.5%
Small and V. Small	48.6%	0.6%	3.4%	52.5%
All size classes <sup>b</sup>	53.9%	9.0%	6.8%	69.8%
(b) Percent of calories produced in each region & size class delivered as food <sup>a,b</sup>				
Urban	90%	80%	84%	90%
Grazing	70%	61%	77%	70%
Large and V. Large	38%	47%	73%	49%
Medium	54%	60%	78%	61%
Small and V. Small	70%	70%	69%	70%
All size classes <sup>b</sup>	69%	51%	72%	66%

<sup>a</sup> Total and food calories are calculated from 41 major crops, as per Cassidy *et al* (2013).

<sup>b</sup> Data include all 83 countries in this study, both census and modeled classifications.

[19, 24]. In addition, the extent to which a given land area is considered ‘small’ is largely dependent on the greater agricultural context, and our estimate of mean farm size uses simply the extent of agricultural land, which is a narrower definition of the land base than many other estimates of farm size. Finally, estimated cropland and pasture area data are based on calibrating satellite and census data and contain their own uncertainties, as previously documented by Ramanakutty *et al* [29].

## Conclusions

Our methodology provides estimates of farming households at subnational spatial resolutions, and allows us to determine where in the developing world small farms are likely to be concentrated, paving the way for a range of comparative analyses and providing guidance for investments. This analysis of the spatial patterns of farm size can improve the ability of policy makers to effectively design and target the market and development programs essential for continued agricultural growth and poverty reduction in regions of small scale farming.

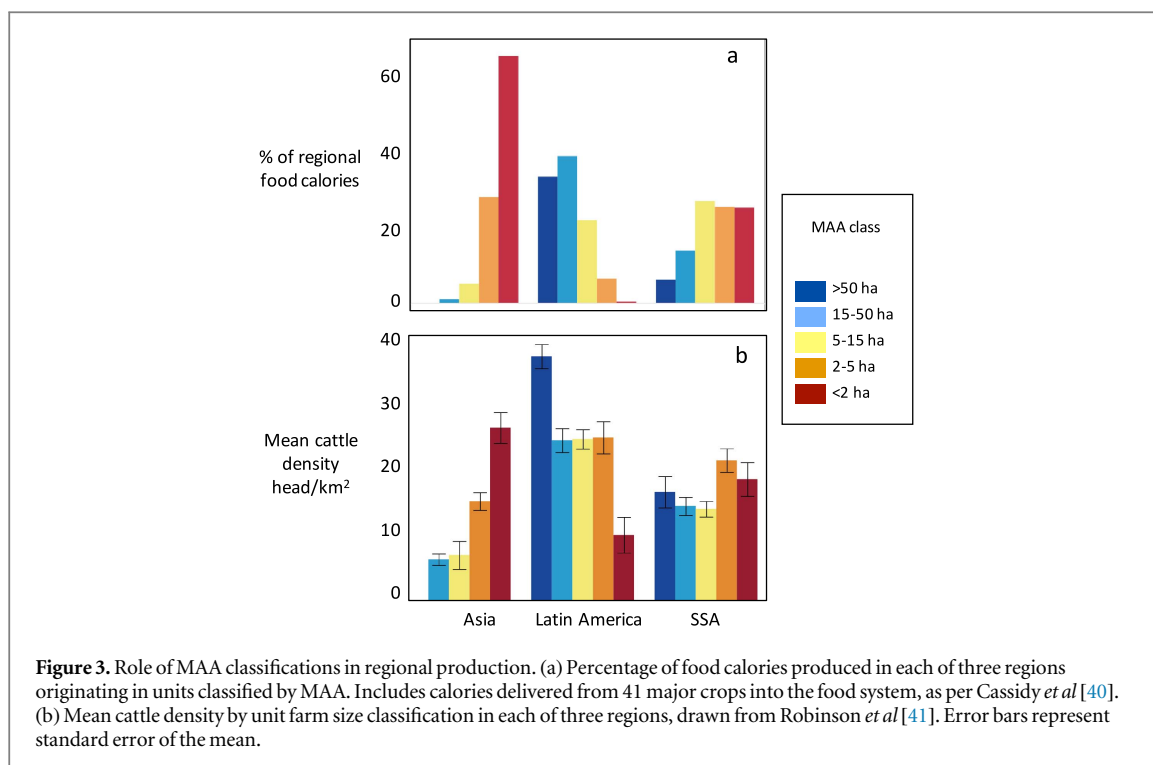
Our analysis supports assertions that, in much of the developing world, food production on smallholder farms is not only a key facet of food security for the rural poor but also makes up the majority of production and underpins agricultural sustainability at national and regional scales [21, 43]. Our findings indicate that more than half of food calories produced globally come from subnational units in the developing world where the density of farming households is very high, averaging less than five hectares per farming household, offering support to frequently cited

statistics about the contribution of small or family farms [e.g. 6, 19, 25].

In addition to contributions to food security at regional and global scales, our results lend support to the importance of small farms for local food production, as smallholder units are especially key in the production of staple crops and direct a greater proportion of their production toward the food supply. Contributions to local food security are crucial, as smallholder agriculture supports the livelihoods of many of the planet’s marginalized populations [25]. Two-thirds of the developing world’s three billion rural people live on farms less than two hectares, and these farms are home to half of the planet’s undernourished population and the majority of people living in absolute poverty [11]. Women, who in many places are less food-secure than men, play a crucial role in smallholder systems [17].

Smallholders’ livelihoods are exposed to risk in many sectors and at many scales; most face missing or inequitable access to markets or capital, few have resources with which to cope with hazards and shocks, and policies designed to improve food security in rural regions of developing countries often fail [21, 25, 44]. In addition, the nature, intensity, and structure of smallholder farming is rapidly changing, and requires policies that allow for these shifts [15]. The success of smallholder agriculture in much of the world is thus largely dependent on supportive policy environments that provide appropriate technology and market supports for small farmers, and create incentives for sustainable intensification [3, 5, 11, 45–48].

Improved spatial information about smallholder farming can also aid in the design of policies intended to mitigate environmental impacts of agricultural intensification and expansion, including resource



degradation, land abandonment, and conversion of natural land cover into new farmland [38]. Effective conservation in many parts of the world depends on policies and innovations that reconcile smallholder farming systems with the maintenance of diverse and functioning ecosystems [12, 14, 17, 49]. The dynamics of agricultural expansion are distinctly different in smallholder systems [50], and smallholder farmers often lack the resources or technical capacity to respond to land use policies, enforcement mechanisms, and certification programs [51–53].

Our approach provides the ability to disaggregate farming populations from non-farming populations, providing a more accurate picture of farming households on the landscape than has previously been available. These data meet a critical need, as improved understanding of the prevalence and distribution of smallholder farming is essential for effective policy development for food security, poverty reduction, and conservation agendas. Targeted investments in smallholder technology adoption, market access, and land tenure, and community organization can lead toward attainment of multiple related SDGs [3], and the improved spatial information on the concentration of small farms provided by this product can help investors, NGOs, and governments direct resources appropriately.

The increasing availability of large-scale household microdata provides a much-needed window into the dynamics of populations and livelihoods. This study is only a first effort at utilizing these rich and complex datasets; we envision numerous future applications of this farm size product in combination with other variables related to food security, natural

resource use, and human wellbeing that will further increase our understanding of the dynamics of small farms and the livelihoods of those who depend on them.

## Acknowledgments

The Global Landscapes Initiative team and others at the Institute on the Environment provided valuable feedback throughout the research and writing process. The Minnesota Population Center provided support in the use of IPUMS census data. The research was primarily supported by funding from the Gordon and Betty Moore Foundation. Additional support was from the Belmont Forum/FACCE-JPI funded DEVIL project (NE/M021327/1). The funders had no role in study design, data collection or analysis, decision to publish, or preparation of the manuscript.

## References

- [1] World Bank 2007 *World Development Report 2008: Agriculture for Development* (Washington, DC: The World Bank)
- [2] Wiggins S, Kirsten J and Llambi L 2010 The future of small farms *World Dev.* **38** 1341–8
- [3] UNCTAD 2015 *Commodities and Development Report 2015: Smallholder Farmers and Sustainable Commodity Development* UNCTAD/SUC/2014/5, United Nations Conference on Trade and Development, Geneva, Switzerland ([unctad.org/en/PublicationsLibrary/suc2014d5\\_en.pdf](http://unctad.org/en/PublicationsLibrary/suc2014d5_en.pdf))
- [4] Lowder S K, Scoet J and Raney T 2016 The number, size, and distribution of farms, smallholder farms, and family farms worldwide *World Dev.* (doi:10.1016/j.worlddev.2015.10.041)
- [5] Birner R and Resnick D 2010 The political economy of policies for smallholder agriculture *World Dev.* **38** 1442–52

- [6] FAO 2014 *The State of Food and Agriculture: Innovation in Family Farming* (Rome: Food and Agriculture Organization of the United Nations) ([www.fao.org/3/a-i4040e.pdf](http://www.fao.org/3/a-i4040e.pdf))
- [7] Herrero M *et al* 2010 Smart investments in sustainable food production: revisiting mixed crop-livestock systems *Science* **327** 822–5
- [8] Herrero M *et al* 2012 *Drivers of Change in Crop–Livestock Systems and Their Potential Impacts on Agro-Ecosystem Services and Human Wellbeing to 2030: A Study Commissioned by the CGIAR Systemwide Livestock Programme* (Nairobi, Kenya: International Livestock Research Institute) (<http://hdl.handle.net/10568/3020>)
- [9] Deininger K and Byerlee D 2012 The rise of large farms in land abundant countries: do they have a future? *World Dev.* **40** 701–14
- [10] Thornton P K *et al* 2002 *Mapping Poverty and Livestock in the Developing World* (Nairobi, Kenya: ILRI) (<https://cgispace.cgiar.org/handle/10568/915>)
- [11] Hazell P, Poulton C, Wiggins S and Dorward A 2010 The future of small farms: trajectories and policy priorities *World Dev.* **38** 1349–61
- [12] Baudron F and Giller K E 2014 Agriculture and nature: trouble and strife? *Biol. Conservation* **170** 232–45
- [13] Newbold T *et al* 2015 Global effects of land use on local terrestrial biodiversity *Nature* **520** 45
- [14] Altieri M, Funes-Monzote F R and Petersen P 2012 Agroecologically efficient agricultural systems for smallholder farmers: contributions to food sovereignty *Agronomy Sustain. Dev.* **32** 1–13
- [15] van Vliet J A *et al* 2015 De-mystifying family farming: features, diversity and trends across the globe *Global Food Secur.* **5** 11–8
- [16] Henderson H 2015 Considering technical and allocative efficiency in the inverse farm size-productivity relationship *J. Agri. Econ.* **66** 442–69
- [17] IFAD 2013 *Smallholders, Food Security, and the Environment* ([www.ifad.org/documents/10180/666cac24-14b6-43c2-876d-9c2d1f01d5dd](http://www.ifad.org/documents/10180/666cac24-14b6-43c2-876d-9c2d1f01d5dd))
- [18] Wales J 2016 Funding the sustainable development goals with investment philanthropy *Aspen J. Ideas* (<http://aspen.us/journal/editions/mayjune-2016/funding-sustainable-development-goals-investment-philanthropy>)
- [19] Graeub B E *et al* 2015 The state of family farms in the world *World Dev.* (doi:10.1016/j.worlddev.2015.05.012)
- [20] Notenbaert A 2009 Classifying livestock production systems for targeting agricultural research and development in a rapidly changing world *Discussion Paper No. 19* International Livestock Research Institute, Nairobi, Kenya (<https://cgispace.cgiar.org/handle/10568/589>)
- [21] Frelat R *et al* 2016 Drivers of household food availability in sub-Saharan Africa based on big data from small farms *Proc. Natl Acad. Sci. USA* **113** 458–63
- [22] Dixon J, Gulliver A and Gibbon D 2001 *Farming Systems and Poverty: Improving Farmers' Livelihoods in a Changing World* ed M Hall (Rome, Italy: FAO and World Bank) ([www.fao.org/3/a-ac349e.pdf](http://www.fao.org/3/a-ac349e.pdf))
- [23] Robinson T *et al* 2011 *Global Livestock Production Systems* (Rome: Food and Agriculture Organization of the United Nations (FAO) and International Livestock Research Institute (ILRI)) ([www.fao.org/docrep/014/i2414e/i2414e.pdf](http://www.fao.org/docrep/014/i2414e/i2414e.pdf))
- [24] Nagayets O 2005 Small farms: current status and key trends *Future of Small Farms Research Workshop* (Wye, 26–29 June) (Washington, DC: IFPRI)
- [25] HILPE 2013 Investing in smallholder agriculture for food security *A Report by the High Level Panel of Experts on Food Security and Nutrition of the Committee on World Food Security* Rome
- [26] Ellis E C and Ramankutty N 2008 Putting people in the map: anthropogenic biomes of the world *Front. Ecol. Environ.* **6** 439–47
- [27] van Asselen S and Verburg P H 2012 A land system representation for global assessments and land-use modeling *Glob. Change Biol.* **18** 3125–48
- [28] Fritz S *et al* 2015 Mapping global cropland and field size *Glob. Change Biol.* **21** 1980–92
- [29] Ramankutty N, Evan A T, Monfreda C and Foley J A 2008 Farming the planet: I. Geographic distribution of global agricultural lands in the year 2000 *Glob. Biogeochem. Cycles* **22** GB1003
- [30] Permanyer I, Esteve-Palos A, Garcia J and McCaa R 2015 Human development index-like small area estimates for Africa computed from IPUMS-International Integrated Census Microdata *J. Hum. Dev. Capabilities* **16** 245–71
- [31] MPC (Minnesota Population Center) 2015 *International: Version 6.4. (Integrated Public Use Microdata Series)* (Minneapolis, MN: University of Minnesota)
- [32] Ruggles S, McCaa R, Sobek M and Cleveland L 2015 The IPUMS collaboration: integrating and disseminating the world's population microdata *J. Demographic Econ.* **81** 203–16
- [33] Plouffe D *et al* Global cropland and pasture data for 2005 and 2010 at 500 m resolution in preparation
- [34] CIESIN (Center for International Earth Science Information Network)—Columbia University, International Food Policy Research Institute—IFPRI, The World Bank, & Centro Internacional de Agricultura Tropical—CIAT 2011 *Global Rural-Urban Mapping Project, Version 1 (GRUMPv1): Population Density Grid* (Palisades, NY: NASA Socioeconomic Data and Applications Center (SEDAC))
- [35] Verburg P H, Ellis E C and Letourneau A 2011 A global assessment of market accessibility and market influence for global environmental change studies *Environ. Res. Lett.* **6** 034019
- [36] JMP 2015 Version 12.0.1 SAS Institute Inc., Cary, NC.
- [37] Global Administrative Areas 2009 (Berkeley, CA: University of California)
- [38] Monfreda C, Ramankutty N and Foley J A 2008 Farming the planet: II. Geographic distribution of crop areas, yields, physiological types, and net primary production in the year 2000 *Glob. Biogeochem. Cycles* **22** GB1022
- [39] West P C *et al* 2014 Leverage points for improving global food security and the environment *Science* **345** 325–8
- [40] Cassidy E S, West P C, Gerber J S and Foley J A 2013 Redefining agricultural yields: from tonnes to people nourished per hectare *Environ. Res. Lett.* **8** 034015
- [41] Robinson T P *et al* 2014 Mapping the global distribution of livestock *PLoS One* **9** e96084
- [42] GRAIN 2014 *Hungry for Land* ([www.grain.org/article/entries/4929-hungry-for-land-small-farmers-feed-the-world-with-less-than-a-quarter-of-all-farmland](http://www.grain.org/article/entries/4929-hungry-for-land-small-farmers-feed-the-world-with-less-than-a-quarter-of-all-farmland))
- [43] Chappell M J and LaValle L A 2011 Food security and biodiversity: can we have both? An agroecological analysis *Agric. Hum. Values* **28** 3–26
- [44] Morton J F 2007 The impact of climate change on smallholder and subsistence agriculture *Proc. Natl Acad. Sci. USA* **104** 19680–5
- [45] Reardon T, Barrett C B, Berdegue J A and Swinnen J F M 2009 Agrifood industry transformation and small farmers in developing countries *World Dev.* **37** 1717–27
- [46] Jayne T S, Mather D and Mghenyi E 2010 Principal challenges confronting smallholder agriculture in Sub-Saharan Africa *World Dev.* **38** 1384–98
- [47] Pokorny B *et al* 2013 From large to small: reorienting rural development policies in response to climate change, food security and poverty *Forest Policy Econ.* **36** 52–9
- [48] Garnett T *et al* 2013 Sustainable intensification in agriculture: premises and policies *Science* **341** 33–4
- [49] Lambin E F and Meyfroidt P 2011 Global land use change, economic globalization, and the looming land scarcity *Proc. Natl Acad. Sci. USA* **108** 3465–72
- [50] Meyfroidt P *et al* 2014 Multiple pathways of commodity crop expansion in tropical forest landscapes *Environ. Res. Lett.* **9** 074012
- [51] Schneider C, Coudel E, Cammelli F and Sablayrolles P 2015 Small-scale farmers' needs to end deforestation: insights for REDD plus in Sao Felix do Xingu (Para, Brazil) *Int. Forestry Rev.* **17** 124–42

- [52] Godar J, Gardner T A, Tizado E J and Pacheco P 2014 Actor-specific contributions to the deforestation slowdown in the Brazilian Amazon *Proc. Natl Acad. Sci. USA* **111** 15591–6
- [53] Garrett R D, Carlson K M, Rueda X and Noojipady P 2016 Assessing the potential additionality of certification by the round table on responsible soybeans and the roundtable on sustainable palm oil *Environ. Res. Lett.* **11** 045003