

ERRATA SHEET

The Following Corrections and Clarifications Apply to Closure Report (CR) for Corrective Action Unit (CAU) 399 Area 18 Disposal Site

DOE Document Number No DOE document number issued to this document

Revision: 0

Original Document Issuance Date: September 1995

This errata sheet was issued under cover letter from DOE on August 10, 2010

The closure report for CAU 399 is just a one page summary listing the coordinates of the disposal site which were given at the time (1995) in Nevada State Plan Coordinates – North American Datum of 1983. The drawing of the use restricted site also listed the coordinates in Nevada State Plan Coordinates – North American Datum of 1983. In the ensuing years the reporting of coordinates has been standardized so that all coordinates are reported in the same manner, which is NAD 27 UTM Zone 11 N, meters. This Errata Sheet updates the coordinate reporting to the currently accepted method and includes an aerial photo showing the disposal site with the coordinates listed showing the use restricted area.

564,800

565,000

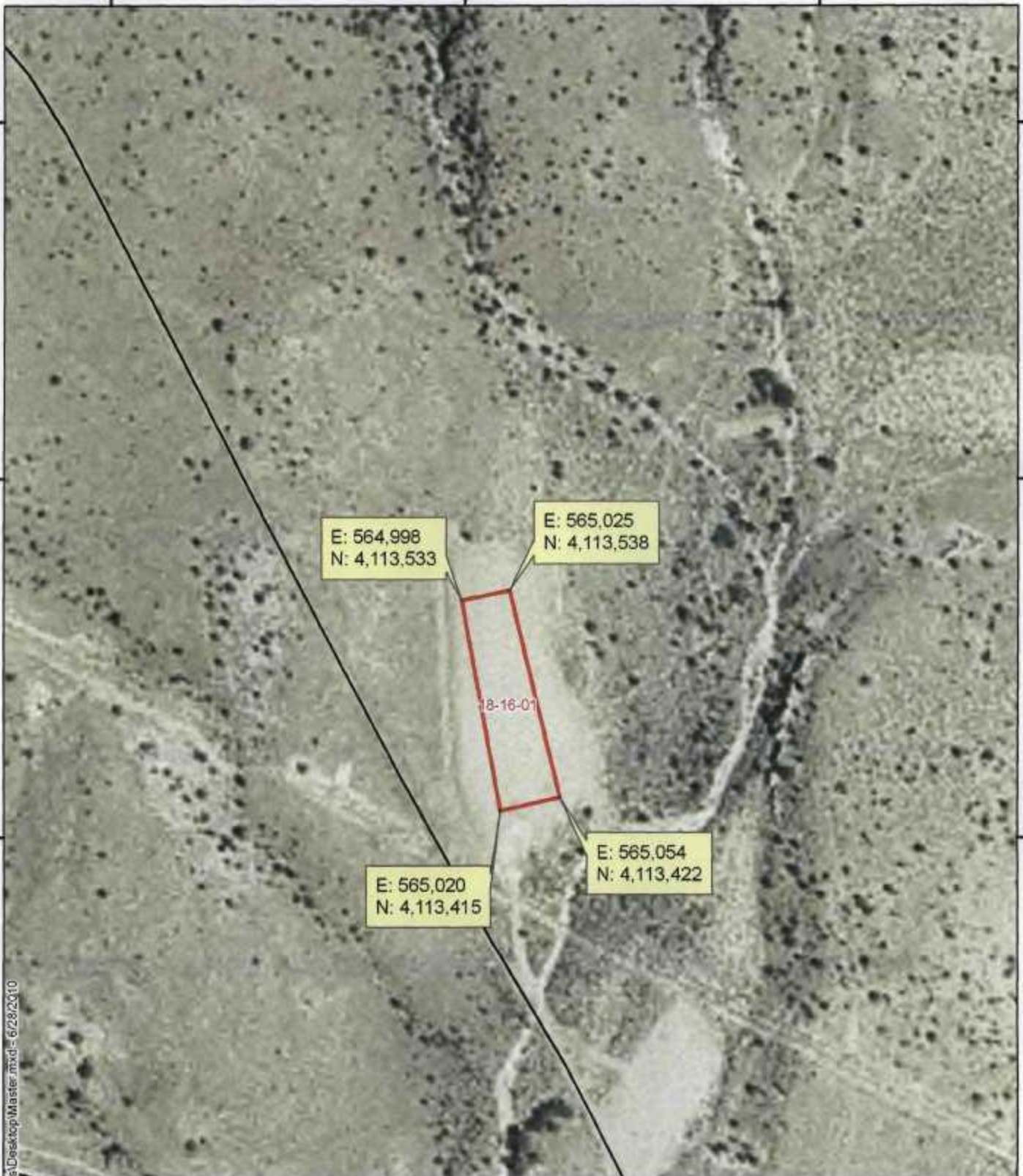
565,200

4,113,800

4,113,600

4,113,400

4,113,200



E: 564,998
N: 4,113,533

E: 565,025
N: 4,113,538

E: 565,020
N: 4,113,415

E: 565,054
N: 4,113,422

18-16-01

C:\Documents and Settings\AJ Users\Desktop\Master.mxd - 6/28/2010



Explanation

- Use Restriction
- NTS Road

**Use Restriction
18-16-01 Area 18 Disposal Site**

0 100 200 400 600 Feet

0 50 100 200 Meters



5

CLOSURE REPORT FOR THE AREA 18 DISPOSAL SITE (CAU 18-16-01)

The Area 18 disposal site is located 0.2 miles west of Pahute Mesa Road and 0.2 miles south of Pahute Mesa Camp. This disposal site was operated from 1966 until 1971. It received refuse, garbage, and construction debris.

A workplan to complete closure was sent from DOE to NDEP (letter dated August 23, 1995) and NDEP approved closure of the site (NDEP to DOE letter dated September 6, 1995). The disposal site was closed (BN to DOE letter dated January 18, 1996) in accordance with the approved closure plan. Closure of this site was observed by NDEP Bureau of Federal Facilities.

Monument coordinates for this site are given below. All coordinates are given in Nevada State Plane Coordinates - North American Datum of 1983.

CAU 18-16-01	
N 20,565,296.15	E 1,756,345.03
N 20,565,312.97	E 1,756,434.07
N 20,564,909.48	E 1,756,416.14
N 20,564,933.35	E 1,756,526.67

This site will be monitored on a yearly basis after the rainy season. The site will be visually inspected for erosion, cracks, subsidence, animal burrows, or other imperfections that may alter the shape or performance of the cover. The cover will be allowed to revegetate naturally. Each inspection will be documented with any deficiencies and corrective actions noted. The cover will be maintained for a minimum period of five years. A site will be considered permanently closed when there are two consecutive years of no corrective actions after the third year documented in the inspection reports. If corrective actions are required after the third year, however, two additional years of no corrective actions must be documented in the inspection reports.