

## LA-UR-15-27707

Approved for public release; distribution is unlimited.

Title: Cultural Resources on the Pajarito Plateau

Author(s): payne, Jennifer E.

Intended for: Hand-out for a public tour

Issued: 2015-10-05

---

**Disclaimer:**

Los Alamos National Laboratory, an affirmative action/equal opportunity employer, is operated by the Los Alamos National Security, LLC for the National Nuclear Security Administration of the U.S. Department of Energy under contract DE-AC52-06NA25396. By approving this article, the publisher recognizes that the U.S. Government retains nonexclusive, royalty-free license to publish or reproduce the published form of this contribution, or to allow others to do so, for U.S. Government purposes. Los Alamos National Laboratory requests that the publisher identify this article as work performed under the auspices of the U.S. Department of Energy. Los Alamos National Laboratory strongly supports academic freedom and a researcher's right to publish; as an institution, however, the Laboratory does not endorse the viewpoint of a publication or guarantee its technical correctness.

---

# Cultural Resources on the Pajarito Plateau

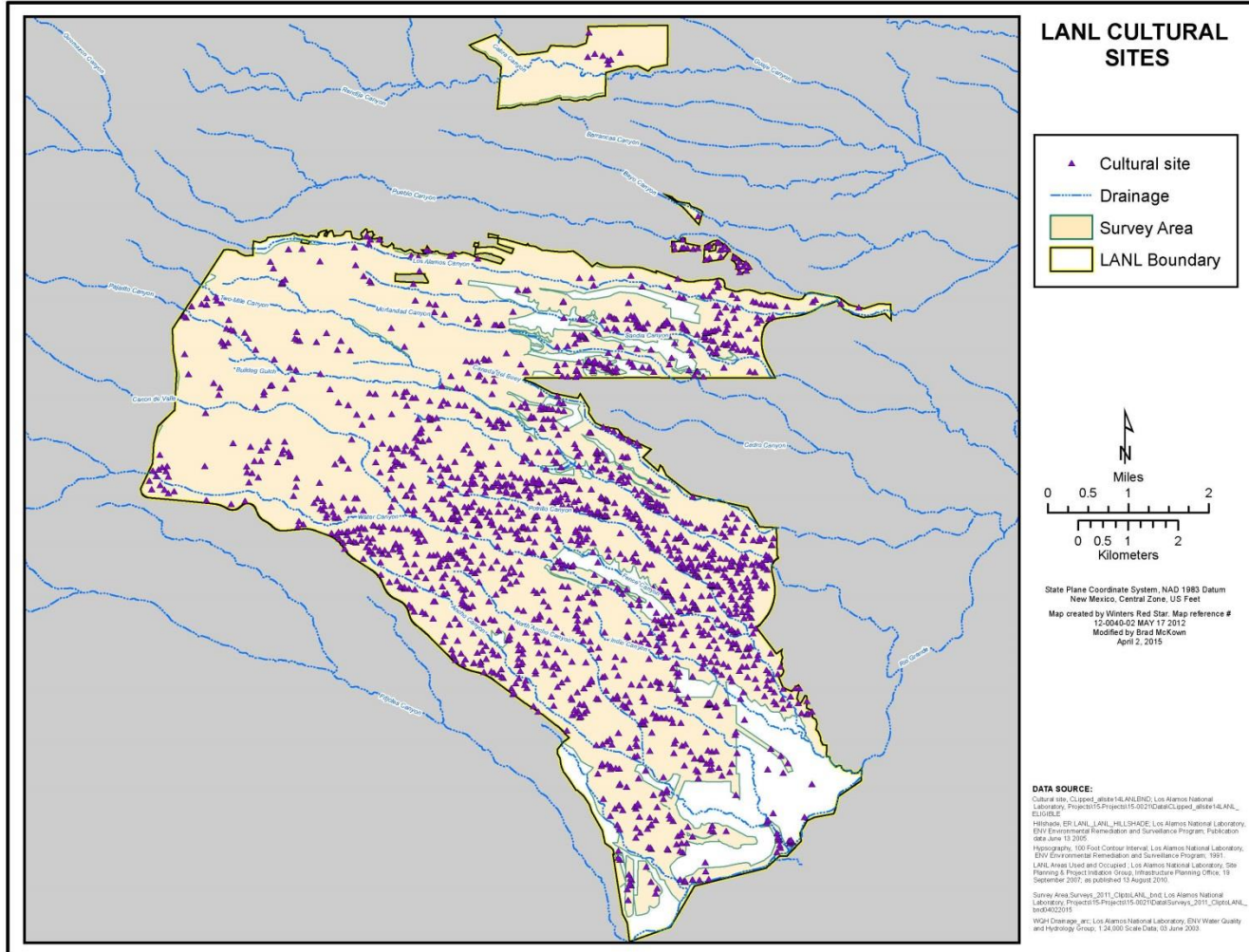
2 October 2015

Resources Management Team  
Environmental Stewardship Services Group  
Environmental Protection Division  
Environment, Safety, and Health Directorate  
Los Alamos National Security, LLC

# Why is there a Cultural Resources Management Program at Los Alamos National Laboratory?

- There are about 2000 cultural resources spanning about 5500 years of human history on Laboratory lands; we have surveyed about 90 percent of these lands.
- We comply with the National Historic Preservation Act (NHPA), the Native American Graves Protection and Repatriation Act, and other Federal laws, which require identification, evaluation, and protection of cultural resources.
- We support DOE to consult Native American communities.
- The Laboratory's Environmental Stewardship Services Group assists the DOE in its stewardship responsibilities.
- We provide guidance for projects to avoid cultural resource impacts and work to mitigate impacts that do occur;
- We work to identify cultural resources during emergencies to identify impacts to these resources following natural disasters;
- We understand potential impacts to cultural resources from LANL operations;
- We monitor cultural resources to assess long term impacts; and
- We sharing what we know with the Public.

# Distribution of Cultural Resources at LANL





# Rock Art at LANL





# Examples of Cavates and Cavates complexes at LANL





# Protecting nonrenewable cultural resources

---

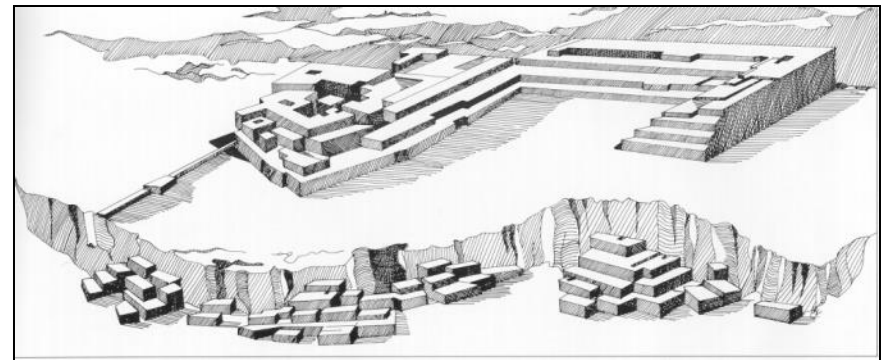
The greatest potential impacts to archaeological sites at LANL are (1) new construction in previously undeveloped areas; (2) erosion; and (3) pot hunting or looting. Site locations are protected under the Archaeological Resources Protection Act to deter looting and vandalism.

Looting includes digging, excavating, and/or collecting artifacts, architecture, and human remains and can be prosecuted as a felony under laws governing burial grounds. To tribal descendants, it is grave robbing and for archaeologists, it is like burning rare books.





# Sharing what we know about the cultural resources of the Pajarito Plateau – Public Tours of Tsirege







**The Antiquities Act of  
1906 (16 USC 432, 433),  
Maria Martinez, Hewett,  
and the Awanyu**



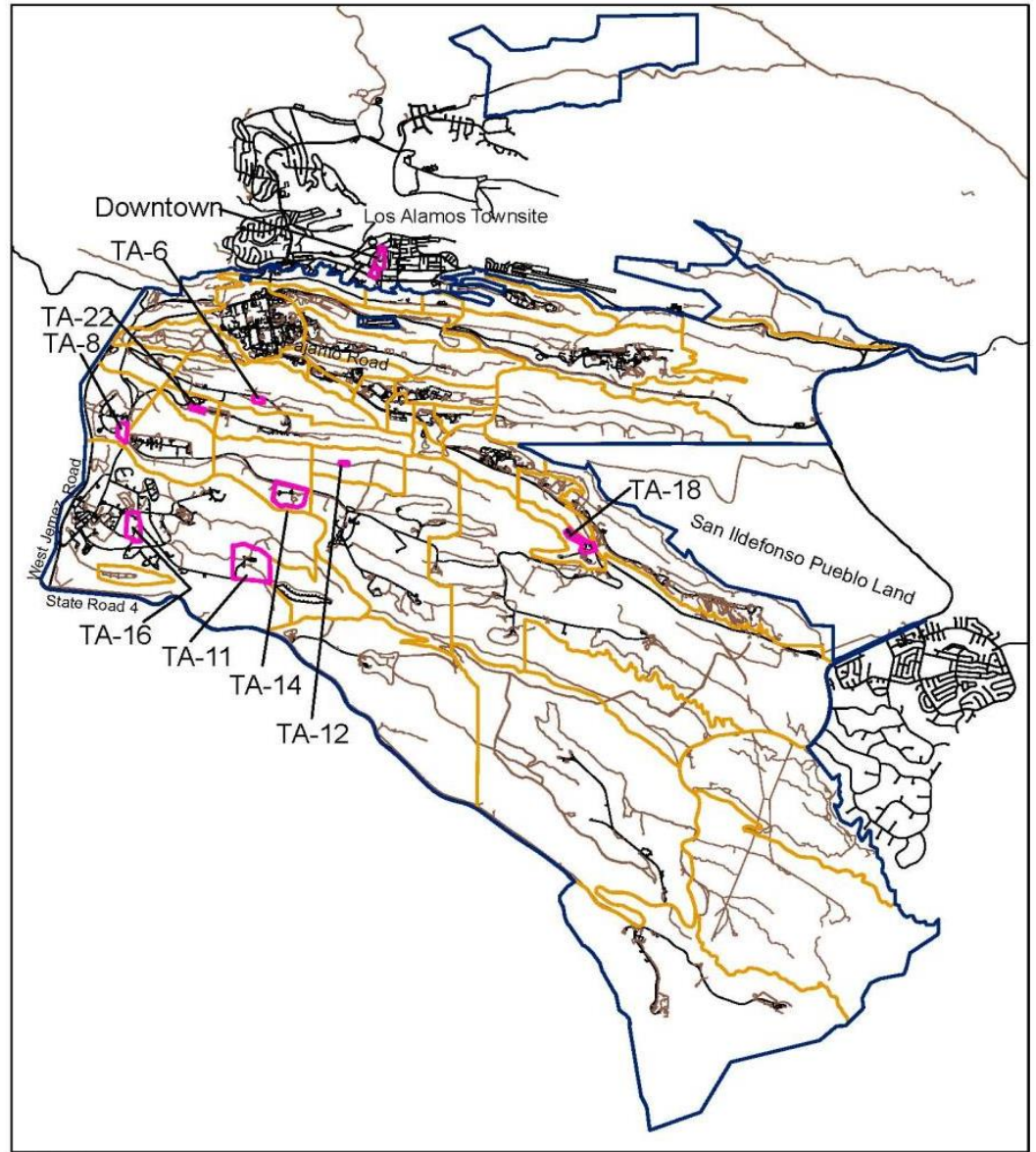
# Sharing what we know continued – The *Environmental Research and Monitoring* Exhibit at the Bradbury Science Museum

- The exhibit includes information on cultural resources, wildlife, climate change, and sustainability.
- LANS worked with DOE, Highlands University, the New Mexico Cultural Affairs Department, the Museum of Indian Arts and Culture, the Pueblo de San Ildefonso, Santa Clara Pueblo, Jemez Pueblo, Cochiti Pueblo, and the Santa Fe Forestry Department.
- The Bradbury has 80,000 visitors a year, from 50 states and 50+ countries.
- We worked with the LANS Virtual Simulation BaseLine Experience (VISIBLE) team to produce a 3-D virtual model of Nake'muu Pueblo, an archaeological site situated in TA-15 and not accessible to the public.
- The Nake'muu model was built with techniques used to create special effects in movies and to develop popular video games; it is part of the new Bradbury exhibit and allows people to explore and learn about the site.





# Proposed Manhattan Project National Historical Park Areas at LANL and LA County (in pink)



1:90,000

UNCLASSIFIED

# Los Alamos Townsite (various land owners)



**East Cafeteria: Los Alamos County**



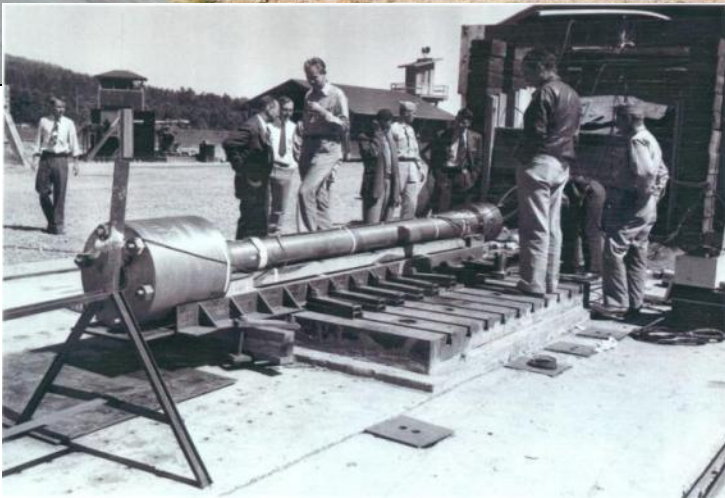
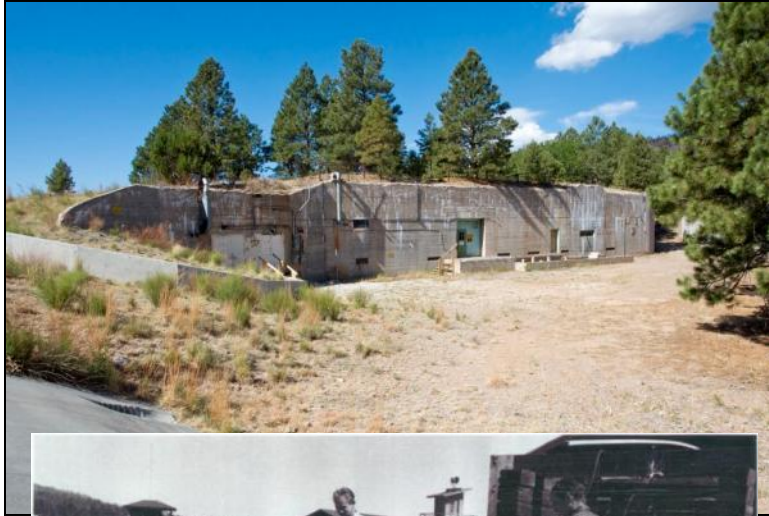
**Oppenheimer's House: Private Residence / Los Alamos Historical Society**





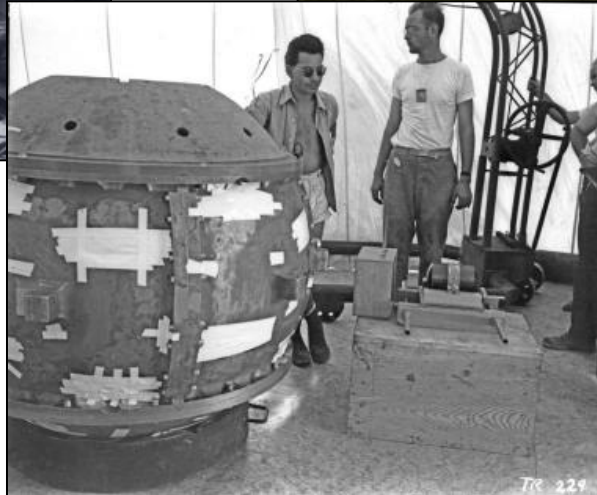
# Department of Energy Properties

## Gun Site (1943) – Little Boy Weapon Development TA-8





# V-Site (1944) – Fat Man Mock-up and Trinity Gadget Assembly TA-16, Buildings 516 (right) and 517 (left)



UNCLASSIFIED

# "Pond Cabin" (1914); TA-18, Building 29

## Plutonium Research – 1944

